



**Neil's Parts**  
*Australia*  
A division of Worthington Ag Parts

**COTTON PICKER PARTS**  
FOR JOHN DEERE® AND CASE-IH® PICKERS



Copyright © 2011 Neil's Parts (Australia) PTY LTD



**STEEL DOOR ONLY**

Neil's P/No.	Description	Application
WN-1576337C	Pressure Door, RH, Front,	2022 & 2044 Head #1 or #3, 2055, 2155, 2555
WN-1546345C	Pressure Door, RH, Rear,	2022 & 2044 Head #1 or #3, 2055, 2155, 2555
WN-1546336C	Pressure Door, LH, Front,	2022 & 2044 Head #2 or #4, 2055, 2155, 2555
WN-1546344C	Pressure Door, LH, Rear,	2022 & 2044 Head #2 or #4, 2055, 2155, 2555
WN-1546340C	Pressure Door, Front Extension	2022, 2044, 2055, 2155, 2555
WN-1546348C	Pressure Door, Rear Extension	2022, 2044, 2055, 2155, 2555



**POLY PRESSURE DOOR KIT - Complete Kit For One Row**

Neil's P/No.	Description	Application
WN-ASCP1844R	Pressure Door Poly Kit - RH, Head #1 or #3	1822 & 1844
WN-ASCP1844L	Pressure Door Poly Kit - LH, Head #2 or #4	1822 & 1844
WN-ASCP2555KIT	Pressure Door Poly Kit - RH 2022 & 2044 Head #1 or #3, 2055, 2155, 2555	2022 & 2044
WN-ACPC2022L	Pressure Door Poly Kit - LH, Head #2 or #4	2022 & 2044



**STEEL/POLY DOOR ASSEMBLIES - Pre-mounted**

Neil's P/No.	Description	Application
WN-APCP337S	Front Door Assembly - RH	2022 & 2044 Head #1 or #3, 2044, 2155, 2555
WN-APCP345S	Rear Door Assembly - RH	2022 & 2044 Head #1 or #3, 2044, 2155, 2555
WN-APCP344S	Rear Door Assembly - LH, Head #2 or #4	2022 & 2044



**POLY NOSE CONE**

Neil's P/No.	Description	Application
WN-126347A2	Plant Lifter - RH, Hi-Density, UV Protected, Polypropylene	1822-2555
WN-126348A2	Plant Lifter - LH, Hi-Density, UV Protected, Polypropylene	1822-2555

Application: 1800-2000 & CPX Series  
(Can be modified for models originally steel - only bracket change)



**METAL SKID - STANDARD**

Neil's P/No.	Description	Application
WN-216969C1	Skid, Support - Standard LH Heads	1822-2555
WN-216970C1	Skid, Support - Standard RH Heads	1822-2555



**POLY SKID - STANDARD**

Neil's P/No.	Description	Application
WN-ACPC155	Skid, Poly, Standard, (Pair)	1800-2000 & CPX Series



**METAL SKID - BIG FOOT - For Wet Conditions**

Neil's P/No.	Description	Application
WN-ACPC100 (pair)	Improved Skids for wet, sticky conditions. Replaces Small Standard Skids, <i>*NOTE* May be too sensitive in dry conditions.</i>	1800-2000 & CPX Series



**POLY SKID - BIG FOOT - Fits WN-ACP100**

Neil's P/No.	Description	Application
WN-ACPC150 (pair)	For better performance in wet, sticky conditions. 8" at widest point (NON STICK)	1800-2000 & CPX Series



**PRESSURE DOOR BUSHINGS - (EACH)**

Neil's P/No.	Description	Application
WN-216544C1	Special nylon bush which is installed in top and bottom of door pivots to eliminate wear that causes doors to lose adjustment and even fall off.	All CIH pickers



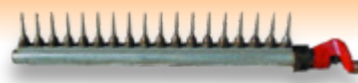
**PLANT LIFTER ROD**

Neil's P/No.	Description	Application
WN-1345015C1	Plant Lifter Rod - LH	1800-2000 & CPX Series
WN-1345016C1	Plant Lifter Rod - RH	1800-2000 & CPX Series

**USED and REBUILT PARTS**  
For 1800 & 2000 Series



FINAL DRIVES



RUNNING BARS



HEAD GEARBOXES



TRANSMISSIONS

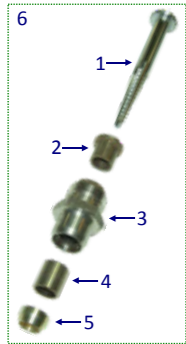
[www.neils.com.au](http://www.neils.com.au)

**Your AG PARTS Specialists!**

Serving the Australian Farming Community for over 38 years!

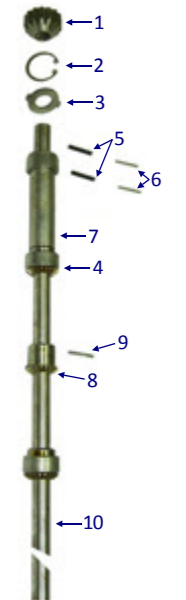
COROWA	DUBBO	TOOWOOMBA	AYR
1800 246 991	1800 246 992	1800 246 993	1800 246 995
AH 0417 486 740, 0407 253 768, 0408 698 503	AH 0417 661 383, 0408 634 867, 0408 634 567	AH 0417 662 137, 0408 735 148, 0428 442 008	AH 0457 824 547, 0427 744 399

\* These are replacement parts only, not OEM. Manufacturer's numbers and images used are for reference only.  
Copyright © 2011 Neil's Parts (Australia) PTY LTD, All rights reserved



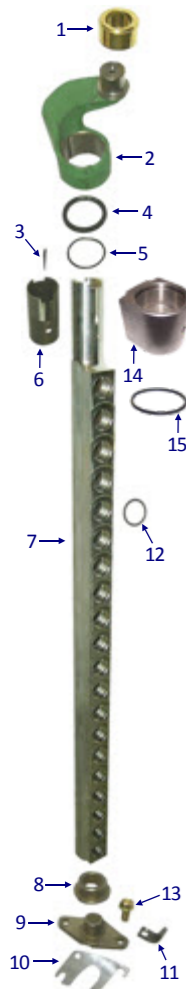
**SPINDLES, NUTS, BUSHES & CAPS**

Neil's P/No.	Description	Application
1 WN-N190332	Spindle - RH	9900-9996
1 WN-N190333	Spindle - LH	9900-9950
1 WN-N277078ST	Spindle - RH, Premium	9900-9996
1 WN-N277079ST	Spindle - LH, Premium	9900-9950
2 WN-N113307	Spindle Rear Bushing	9900-9996
3 WN-AN111948	Spindle Nut Assembly - RH, (with Bushes), Conventional and In-Line	9900-9996
3 WN-AN111949	Spindle Nut Assembly - LH, (with Bushes)	9900-9950
4 WN-N112394	Spindle Front Bushing	9900-9996
5 WN-N111521	Spindle Nut Cap Shield	9900-9996
6 WN-AN274216	Spindle & Nut Assembly - RH, Premium Spindle	9900-9996



**GEAR SHAFT ASSEMBLY**

Neil's P/No.	Description	Application
1 WN-N118289	Top Gear - 14 Teeth	9900-9996
2 WN-T23694	Snap Ring - Bar Top, (Pkt of 20)	9900-9996
3 WN-N190988	Thrust Washer, Spindle Drive Shaft	9910-9965
4 WN-JD8804	Needle Bearing, Spindle Drive Shaft	9900-9996
4 WN-JD8804G	Needle Bearing, Spindle Drive Shaft, Greasable	9900-9996
5 WN-34H266	Roll Pin 5/32" x 1", Top Gear Outer, (Pkt of 100)	9900-9996
6 WN-34H235	Roll Pin 3/32" x 1", Top Gear Inner, (Pkt of 100)	9900-9996
7 WN-N190745	Gear Shaft Sleeve	9900-9940
7 WN-N278782	Bar Sleeve	9970-9996
8 WN-L2456N	Spindle Drive Bevel Gear, (Takes Bearing)	9900-9965
8 WN-N371626	Spindle Drive Bevel Gear	9970-9996
9 WN-34H45	Roll Pin 1/8" x 1", for Spindle Drive Bevel Gear, (Pkt of 250)	9900-9965
9 WN-34H60	Roll Pin 5/52" x 1", (Pkt of 100)	9970-9996
10 WN-N275212	Gear Shaft, Spindle Drive, 20 Spindle Bar	9900-9950
10 WN-N196825	Gear Shaft, Spindle Drive, 18 Spindle Bar	9960-9965
10 WN-371720	Gear Shaft, Spindle Drive, PRO-12	9970, 9976, 9986, 9996
10 WN-N371572	Gear Shaft, Spindle Drive, PRO-16	9976, 9986, 9996



**BAR TOP ARMS & PARTS**

Neil's P/No.	Description	Application
1 WN-N193500	Cam Roller - Bar Top Arm	9900-9996
2 WN-N114682	Cam Follower Arm - RH	9900, 9910, 9920, 9940, 9950 s/n 101-2000
2 WN-N114683	Cam Follower Arm - LH	9900, 9910, 9920, 9940, 9950 s/n 101-2000
2 WN-N198724	Cam Follower Arm - RH	9900-9996
2 WN-N198725	Cam Follower Arm - LH	9930
3 WN-N195970	Tapered Key, Bar Sleeve	9900-9996
3 WN-H64373	Key for Bar Shaft	9900-9996
4 WN-N119589	Seal - Upper, Bar Sleeve Top	9910-9965
5 WN-N119581	Seal - Lower, Bar Sleeve Bottom, (Pkt of 20)	9910-9965
6 WN-N117859	Bar Sleeve, 53mm Long	9900, 9910, 9920, 9940
6 WN-N195657	Bar Sleeve with Keyway	9950 s/n 2001-, 9960, 9965
6 WN-N279372	Bar Sleeve with Keyway	9970-9996
14 WN-N370976	Bar Journal	9970-9996
15 WN-T19854	O-Ring, Bearing Bar Journal	9970-9996

**BAR CASES**

Neil's P/No.	Description	Application
7 WN-AN192756	Spindle Bar - RH, 20 Spindle	9900-9920, 9940
7 WN-AN192755	Spindle Bar - LH, 20 Spindle	9900-9920, 9940
7 WN-AN192810	Spindle Bar - RH, 20 Spindle	9930-9950
7 WN-AN192809	Spindle Bar - LH, 20 Spindle	9930-9950
7 WN-AN273434	Spindle Bar, PRO-16, 20 Spindle	9976, 9986, 9996
7 WN-AN274501	Spindle Bar, PRO-12, 18 Spindle	9970, 9976, 9986, 9996
8 WN-N196062	Bar Bushing - Bottom of Bar	9900-9986
9 WN-N112291	Lower Pivot Stand for Picker Bar	9900-9996
10 WN-669818R1	Shim - Bottom Bar, 0.005", (Pkt 100)	9900-9996
11 WN-CPE683	Dirt Scraper	9900-9996
12 WN-L2889N	Spindle Nut Shim, 0.005", (Pkt of 100)	9900-9996
12 WN-N110223	Spindle Nut Shim, 0.010", (Pkt of 100)	9900-9996
13 WN-19H1813	Bolt for Lower Pivot Stand	9900-9996
WN-AN190474	Seal, Picker Bar, CR Oil Seal Type XBTL	9900-9986



**GRID BARS**

Neil's P/No.	Description	Application
WN-216828C2	Grid Bar - LH	1800-2000 & CPX Series
WN-216829C2	Grid Bar - RH	1800-2000 & CPX Series



**CAM TRACKS**

Neil's P/No.	Description	Application
WN-394252A1	Cam Track - LH	2000 & CPX Series
WN-1982351C2	Cam Track - RH	2000 & CPX Series



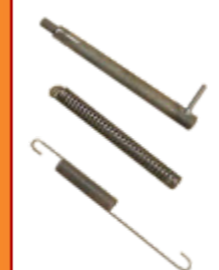
**POLY DOFFERS & DOFFER ADJUSTMENT PARTS**

Neil's P/No.	Description	Application
WN-383311A1	Poly Doffer - Large	2000 & CPX Series
WN-123176A1	Poly Doffer - Small	1822, 1844
WN-216150C1	Doffer Spacer Kit (19 spacers) Spacer kits for WN-383311A1 & WN-123176A1	1800-2000 & CPX Series
WN-1982373C1	Doffer Adjustment Screw	2000 & CPX Series
WN-662519R91	Bearing, Doffer Adjustment Housing	2000 & CPX Series
WN-669807R91	Bearing, Doffer	1800-2000 & CPX Series
WN-1982375C1	Doffer Shaft	2000 & CPX Series
WN-216599C1	Doffer Shaft	1800 Series
WN-425-1312	Slotted Nut - Doffer	1800-2000 & CPX Series
WN-1982372C1	Doffer Adjustment Housing	2000 & CPX Series



**MOISTENER PAD & HOLDER**

Neil's P/No.	Description	Application
WN-1338720C	Moistener Pad	1800-2000 & CPX Series
WN-214500C1	Moistener Pad Holder	1800-2000 & CPX Series



**PRESSURE DOOR COMPONENTS**

Neil's P/No.	Description	Application
WN-673851R3	Rod	2000 & CPX Series
WN-1982712C1	Rod	2000 & CPX Series
WN-1032214R1	Spring, Compression	2000 & CPX Series
WN-1338869C1	Spring, Extension	1800-2000 & CPX Series
WN-1982784C1	Rod, Hinge Pin, Pressure Door	2000 & CPX Series
WN-1982785C1	Rod, Torsion Bar Rear, Pressure Door	2000 & CPX Series



**TPR DUCTING**

Constructed from a Thermo Plastic Rubber compound with a steel spiral Helix. TPR is a good choice multi-purpose ducting with excellent flexibility, U.V. and abrasive resistant characteristics. TPR also has good resistance to many chemicals and oils.

Neil's P/No.	Description
WN-CP-DUCT-4	4" Ducting Hose, Sold per Metre
WN-CP-DUCT-5	5" Ducting Hose, Sold per Metre
WN-CP-DUCT-6	6" Ducting Hose, Sold per Metre
WN-CP-DUCT-7	7" Ducting Hose, Sold per Metre
WN-CP-DUCT-8	8" Ducting Hose, Sold per Metre
WN-CP-TUBE4	4mm Tube for Moistener Towers

**Seeco Super Concentrate Spindle Cleaner**

Seeco Super Concentrate Spindle Cleaner is a water soluble cleaner designed specifically for use in cotton picker moistening systems to keep spindles clean and free of buildup. Clean spindles with exposed barbs allows for more efficient operation and easier doffing of cotton.


Seeco Super Concentrate Spindle Cleaner is a highly concentrated spindle cleaner. It will reduce the amount of product needed to treat the water, is EASY TO HANDLE and Comes in 470ml bottle that will treat up to 1,212 litres of water. One bottle will treat as much water as 19 litres of regular spindle cleaner.



Copyright © 2011 Neil's Parts (Australia) PTY LTD

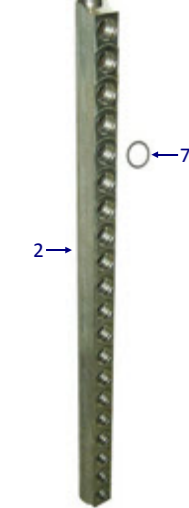
Copyright © 2011 Neil's Parts (Australia) PTY LTD

**SPINDLE ASSEMBLY**

	Neil's P/No.	Description	Application
	1 WN-216546C2	Spindle - LH	1800-2000 & CPX Series
	1 WN-346040A1	Spindle - RH	1800-2000 & CPX Series
	1 WN-346041A1	Spindle - LH, Extra Chrome	1800-2000 & CPX Series
	1 WN-346042A1	Spindle - RH, Extra Chrome	1800-2000 & CPX Series
	2 WN-216553C1	Bushing - Spindle - Rear (Flanged)	1822-1844
	2 WN-1994864C1	Bushing - Spindle - Rear (Flanged)	2000 & CPX Series
	3 WN-220330C91	Spindle Nut - LH (with Bushes)	1822-1844
		*Can be replaced by 1994865C1 (Later Type) if necessary	
	3 WN-220331C91	Spindle Nut - RH (with Bushes)	1822-1844
		*Can be replaced by 1994866C1 (Later Type) if necessary	
	3 WN-1994865C1	Spindle Nut - LH (with Bushes)	2000 & CPX Series
	3 WN-1994866C1	Spindle Nut - RH (with Bushes)	2000 & CPX Series
	4 WN-216552C1	Bushing - Front (Plain) - Spindle	1822-1844
	4 WN-1994863C1	Bushing - Front (Plain) - Spindle	2000 & CPX Series
	5 WN-216554C1	Dust Cap - Spindle	1800-2000 & CPX Series




**SPINDLE BAR & PARTS**


	Neil's P/No.	Description	Application
	1 WN-1982364C1	Spindle Bar Seal - Upper	1800-2000 & CPX Series
	1a WN-223634C2	Bar Sleeve	1800-2000 & CPX Series
	1b WN-N119581	Bar Seal - Lower	1800-2000 & CPX Series
		Fits in Bearing on Bar Neck under WN-1982364C1 Seal, (Pkt of 20)	
	2 WN-220325C1	Spindle Bar - RH	2000 & CPX Series
	2 WN-220324C1	Spindle Bar - LH	2000 & CPX Series
	3 WN-269192R1	Snap Ring - Top Gear, (Pkt of 20)	1800-2000 & CPX Series
	4 WN-669815R3	Spindle Bar Bushing - Lower	1800-2000 & CPX Series
	5 WN-214910C2	Pivot - Barstool	1800-2000 & CPX Series
	6 WN-38-1916	Spindle Drive Gear Rollpin, 9/64" x 1", (Pkt of 50)	1800-2000 & CPX Series
	7 WN-L2889N	Spindle Nut Shim, 0.005", (Pkt of 100)	
	7 WN-N110223	Spindle Nut Shim, 0.010", (Pkt of 100)	
	8 WN-66981R1	Bottom Bar Shim, 0.003", (Pkt of 100)	
	8 WN-669818R1	Bottom Bar Shim, 0.005", (Pkt of 100)	
	8 WN-669819R1	Bottom Bar Shim, 0.007", (Pkt of 100)	




**SPINDLE SHAFT, GEARS & BEARINGS**

	Neil's P/No.	Description	Application
	WN-216578C2	Spindle Drive Shaft, Splined End	1800-2000 & CPX Series
	WN-10053RA	Spindle Drive Gear, (Takes Bearing)	1800-2000 & CPX Series
	WN-10054RA	Spindle Drive Gear, (Plain)	1800-2000 & CPX Series
	WN-3139062R91	Spindle Bar Bearing	1800-2000 & CPX Series
	WN-372070R91	Spindle Bar Top Thrust Bearing, Flat Needle Roller	1800-2000 & CPX Series
	WN-216581C1	Thrust Washer	1800-2000 & CPX Series
	WN-86948C1	Bar Top Brass Roller	1800-2000 & CPX Series
	WN-216584C3	Bar Top Gear	1800-2000 & CPX Series


**PRESSURE DOORS & COMPONENTS**

	Neil's P/No.	Description	Application
	WN-AN193029	Pressure Door - Front or Rear	9960, 9965
	WN-N196126	Pressure Door Extension - Front or Rear (Plastic)	In-Line 9935, 9960 and 9965
	WN-CTX74587F	Pressure Door - Front, PRO 12, 18 Spindle	9970, 9976, 9986
	WN-CTX74587R	Pressure Door - Rear, PRO 12, 18 Spindle	9970, 9976, 9986
	WN-N190464	Spring - RH	9900-9986
	WN-N190465	Spring - LH	9900-9986
	WN-N198712	Door Reinforcement	9960-9986
	WN-N196767	Scraping Plate, In-Line Heads	9935, 9960, 9965
	WN-669970	Scraping Plate, 3 per Door, Not with Rear Case	9970, 9976, 9986
	WN-669971	Scraping Plate, 1 used on Top of 20 Spindle Door	9970, 9976, 9986
	WN-AN274587	Pressure Door - Rear, PRO 12	9970, 9976, 9986
	WN-AN274593	Pressure Door - Front, PRO 12	9970, 9976, 9986

**GRID BARS**

	Neil's P/No.	Description	Application
	WN-N116513	Grid Bar - Front	9900-9965
	WN-N116513A	Grid Bar - Front, Aluminium	9900-9965
	WN-N190662	Grid Bar - Rear	9920-9950
	WN-N197039	Grid Bar - Rear, In-Line	9960-9965
	WN-N277542	Grid Bar - Front, PRO	9935, 9970, 9976, 9986, 9996
	WN-N277543	Grid Bar - Rear, PRO	9935, 9970, 9976, 9986, 9996

**HEAD GEARBOX PARTS**

	Neil's P/No.	Description	Application
	WN-AN277501	Gear Case, Unit 1	9970, 9976, 9986, 9996
	WN-AN277503	Gear Case	9970, 9976, 9986, 9996
	WN-AN277504	Gear Case	9970, 9976, 9986, 9996
	WN-AN277505	Gear Case	9970, 9976, 9986, 9996
	WN-AN277506	Gear Case	9970, 9976, 9986, 9996
	WN-CE17347	Pinion, Lower Gear Case Hub	9970-9976
	WN-CE17350	Pinion, Gear Case	9970-9976
	WN-CE17352	Shaft, Gear Case	9970-9976
	WN-CE17351	Shaft, Picking Unit, Gear Case	9970-9976
	WN-CE17353	Shaft, Picking Unit, Gear Case	9970-9976
	WN-CE17346	Pinion Shaft	9970-9976
	WN-CE18095	Shaft, Lower Gear Case	9970, 9976
	WN-CE18599	Gear, Picking Unit, Gear Case	9986, 9996
	WN-CE18278	Pinion Shaft	
	WN-CE18601	Ring Gear, Lower Gear Case Hub	9986, 9996
	WN-CE18543	Shaft, Drive, Universal	9986, 9996
	WN-CE18544	Shaft, Drive, Universal	9986, 9996
	WN-N197405	Gear Housing - Head Gearbox	9935, 9960, 9965
	WN-N199063	Gear Housing - Bottom Idler, Cast	9935, 9960, 9965
	WN-N274010	Drum Slip Clutch Housing - Upper, Takes JD 9321 Bearing	9970-9986
	WN-N371736	Drum Slip Clutch Housing - Lower, Takes JD 9467 Bearing	9970-9986
	WN-N197570	Shaft - Head Gearbox, Long	9960
	WN-N197571	Shaft - Head Gearbox, Short	9935, 9960, 9965
	WN-N196928	Bevel Gear - 21 Teeth, Head Gearbox	9960-9965
	WN-AN193118	Gear - 24T, Drum Slip Clutch, Incl. L1713C Bronze Bush	9930, 9935, 9960, 9965
	WN-AN272096	Sun Spur Gear, Upper Drum Drive	9930, 9960-9965
	WN-AN272285	Idler Gear - 53 Teeth, Drum Slip Clutch	9930-9960-9965
	WN-AN193401	Gear - 21 Teeth, Lower Gear Case	9960-9965
	WN-N196929	Bevel Gear - 29 Teeth, Lower Gear Case	9960-9965
	WN-AN274016	Spur Gear - 1 Piece Type, PRO-16	9970-9976
		55 Tooth Gear to Replace 2 Piece Gear, Shaft, Snap Ring and Washer	
	WN-AN274017	Spur Gear - 1 Piece Type, PRO-12	9970-9976
		53 Tooth Gear to Replace 2 Piece Gear, Shaft, Snap Ring and Washer	
	WN-CE18545	Shaft, Drive, Universal	9986, 9996
	WN-CE18597	Shaft, Drive, Universal	9986, 9996
	WN-CE18543	Shaft, Pinion	9986, 9996
	WN-N371644	Spur Gear	9986, 9996
	WN-AN272800	Gear, Drum Drive, 138 Teeth, Pro 16	9970-9996
	WN-AN272801	Sungear, 100 Tooth	9930, 9970-9996
	WN-AN272972	Drive Gear, Lower, 21 Teeth	9970-9996
	WN-CE18602	Pinion Shaft	9986, 9996

**POLY DOFFER & PARTS**



Neil's P/No.	Description	Application
WN-AN272152	Poly Doffer, White Urethane, 6-1/4"	9900-9996
WN-AN274506	Doffer Shaft - PRO-12	9970-9996
WN-AN273701	Doffer Shaft - PRO-16, 20 Spindle	9970-9996
WN-AN273953	Doffer Bearing Housing, 3 Bolt Mount, Grease Nipple Included	9900-9996
WN-H82619	Doffer Shaft Lock Nut, 1-1/8"	9970-9996
WN-N275038	Doffer Shaft Lock Nut	9970-9976
WN-N198746	Doffer Shaft Spacer, Bottom - 1 per shaft, PRO-12 & 16	9970-9976
WN-N275381	Doffer Shaft Spacer, PRO-12 & 16, (17 per PRO-12, 19 per PRO-16)	9970-9976
WN-AN275022	Bearing - Bottom Doffer	9970-9976
WN-JD10123	Bearing - Bottom Doffer	9910-9965
WN-N275350	Spacer - Bottom Doffer	9970-9976
WN-N115723	Doffer Seal - Upper	9900-9965
WN-L3197N	Doffer Shaft Shim	9970-9996
WN-N277236	Doffer Adjuster Seal	9970-9996

**CAM TRACKS**



Neil's P/No.	Description	Application
WN-N273012	Cam Track - 12 Bar	9970-9996
WN-N190600	Cam Track - 12 Bar - RH	9900-9950
WN-N190601	Cam Track - 12 Bar - LH	9900-9950
WN-N116466	Cam Track - 16 Bar - RH	9900, 9910
WN-N116467	Cam Track - 16 Bar - LH	9900, 9910
WN-N273016	Cam Track - 16 Bar	9976-9996

**FANS & PARTS**



Neil's P/No.	Description	Application
WN-AN193785	4 Row Fan - Complete	9940, 9950, 9960, 9965
WN-N196679	Impeller Only to suit 4 Row Fan	9940, 9950, 9960, 9965
WN-N196111	4 Row Fan Impeller Shaft	9940, 9950, 9960, 9965
WN-AN115233	2 Row Fan - Complete	9900, 9910, 9920, 9930
WN-N119769	Impeller Only to suit 2 Row Fan	9900, 9910, 9920, 9930
WN-N196398	2 Row Fan Shaft (1-3/8" Diam x 17-7/8" Length)	Fits 9930 Only after s/n 2000

**Does NOT Fit 9900, 9910 or 9920**

**MOISTENER PADS / COLUMNS**



Neil's P/No.	Description	Application
WN-N275607	Moistener Pad, Clear Poly	9900-9996
WN-AN273474	Moistener Column, PRO-16	9976, 9986
WN-AN273512	Moistener Column Latch - Rear, PRO-16	9976, 9986, 9996
WN-AN274513	Moistener Column Latch - Front & Rear, PRO-12	9970, 9976, 9986, 9996
WN-AN274659	Moistener Column Latch - Front, PRO-16	9976, 9986, 9996
WN-AN279610	Moistener Column, PRO-12	9970, 9976, 9986

**TPR DUCTING**



Constructed from a Thermo Plastic Rubber compound with a steel spiral Helix. TPR is a good choice multi-purpose ducting with excellent flexibility, U.V. and abrasive resistant characteristics. TPR also has good resistance to many chemicals and oils.

Neil's P/No.	Description
WN-CP-DUCT-4	4" Ducting Hose, Sold per Metre
WN-CP-DUCT-5	5" Ducting Hose, Sold per Metre
WN-CP-DUCT-6	6" Ducting Hose, Sold per Metre
WN-CP-DUCT-7	7" Ducting Hose, Sold per Metre
WN-CP-DUCT-8	8" Ducting Hose, Sold per Metre
WN-CP-TUBE4	4mm Tube for Moistener Towers

**Seeco Super Concentrate Spindle Cleaner**



Seeco Super Concentrate Spindle Cleaner is a water soluble cleaner designed specifically for use in cotton picker moistening systems to keep spindles clean and free of buildup. Clean spindles with exposed barbs allows for more efficient operation and easier doffing of cotton.

Seeco Super Concentrate Spindle Cleaner is a highly concentrated spindle cleaner. It will reduce the amount of product needed to treat the water, is EASY TO HANDLE and Comes in 470ml bottle that will treat up to 1,212 litres of water. One bottle will treat as much water as 19 litres of regular spindle cleaner. Recommended as a replacement product for John Deere Spindle Cleaner (AN114022/23).

**POLY PRESSURE DOOR KIT - Complete Kit For One Row**



Neil's P/No.	Description	Application
WN-ASJP9940	Poly Pressure Door Kit	9920 & 9940
WN-ASJP9950	Poly Pressure Door Kit	9930 & 9950
WN-ASJP9961	Poly Pressure Door Kit, Pickers with In-Line Heads only	9960, 9965

**STEEL/POLY COMBO**

Neil's P/No.	Description	Application
WN-APJP029S	Steel/Poly Pressure Door Assembly, Pickers with In-Line Heads Only	9960 & 9965

**POLY PRESSURE DOOR COVER**



Neil's P/No.	Description	Application
WN-APJP593	Front Door PRO 16, 20 Spindle, (AN274593)	9976 & 9986
WN-APJP593R	Rear Door PRO 16, 20 Spindle, (AN274593)	9976 & 9986
WN-APJP104	Front/Rear Door Extension PRO-16, 20 Spindle, (N274104)	9976, 9986, 9996
WN-APJP587	Front Door PRO 12, 18 Spindle, (AN274587)	9970 & 9986
WN-APJP587R	Rear Door PRO 12, 18 Spindle, (AN274587)	9970 & 9986
WN-APJP108	Front/Rear Door Extension PRO-12, 18 Spindle, (N278108)	9935, 9970-9996

**STEEL SKID SHOE - (SINGLE UNIT - NOT A KIT)**



Neil's P/No.	Description	Application
WN-N191622	Steel Skid Shoe	9910-9986

**POLY SKID SHOE - (SINGLE UNIT - NOT A KIT)**



Neil's P/No.	Description	Application
WN-PT17815	OEM Style Poly Skid Shoe, Hard	9900-9986

**RIVET TOOL & RIVETS**



Neil's P/No.	Description
WN-RTOOL-PT	Fitting Tool for Poly Tech Rivets
WN-CPR-150	Poly Tech Rivets for Poly Doors

**POLY NOSE CONES**



Neil's P/No.	Description	Application
WN-N196205	Lower/Front Nose Cone - Small RH & LH the same	9960
WN-N199879	Lower/Front Nose Cone - Large RH & LH the same	9965-9996
WN-N196206	Upper Nose Cone - RH	9960-9986
WN-N196207	Upper Nose Cone - LH	9960-9996

**PLANT LIFTER / CABINET**



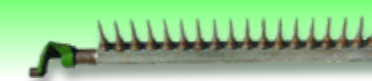
Neil's P/No.	Description	Application
WN-N272753	Plant Lifter Plate - Crop Divider Foot, (Sub N192707)	9960-9976
WN-N192710	Plant Lifter Guide - Crop Divider - RH, Outer	9900-9976
WN-N192711	Plant Lifter Guide - Crop Divider - LH, Outer	9900-9976
WN-N192708	Plant Lifter Guide - Crop Divider - RH, Inner	9900-9976
WN-N192709	Plant Lifter Guide - Crop Divider - LH, Inner	9900-9976
WN-AN277157	Plant Lifter Frame - Crop Divider - LH	9960-9976
WN-AN277158	Plant Lifter Frame - Crop Divider - RH	9960-9976
WN-N276060	Plant Lifter Guide	9970, 9976, 9986
WN-N197044	Picker Frame	9960-9965
WN-N272732	Picker Hanger Roller	9965-9996



**USED and REBUILT PARTS**



**FINAL DRIVES**  
9930, 9960, 9965



**RUNNING BARS**  
9910 - 9950; 9960, 9965;  
9976 (PRO 12 & 16)



**HEAD GEARBOXES**



**TRANSMISSIONS**  
9930, 9960, 9965

Copyright © 2011 Neil's Parts (Australia) PTY LTD

Copyright © 2011 Neil's Parts (Australia) PTY LTD