

## TEST RESULTS

NEW MEXICANN / SUPER SILVER HAZE / SSH-15



# Results

## Gross and Microscopic Visual Analysis

Gross and microscopic analysis did not reveal the presence of any foreign organic matter including but not limited to: Insects, larvae or insect casings.



Moisture Content

Sample	Initial Weight	Final Weight	%Moisture by Weight	Date	Time
SSH-15	1.388 g	1.239 g	10.73	2/25/13	9:21 AM

Cannabinoid	% Dry Weight	% Moisture	% Actual Weight
CBD	0.767	10.73	0.685
CBN	0.000	10.73	0.000
THC	20.363	10.73	18.178

## Certificate of Analysis

27-Feb-2013

### Page Analytical Labs Microbiology Research and Quality Control

**Sample (Product) ID: NM\_SSH**

**Product (Group):** M-Excellent

**Batch/Lot:** 15

**Source:**

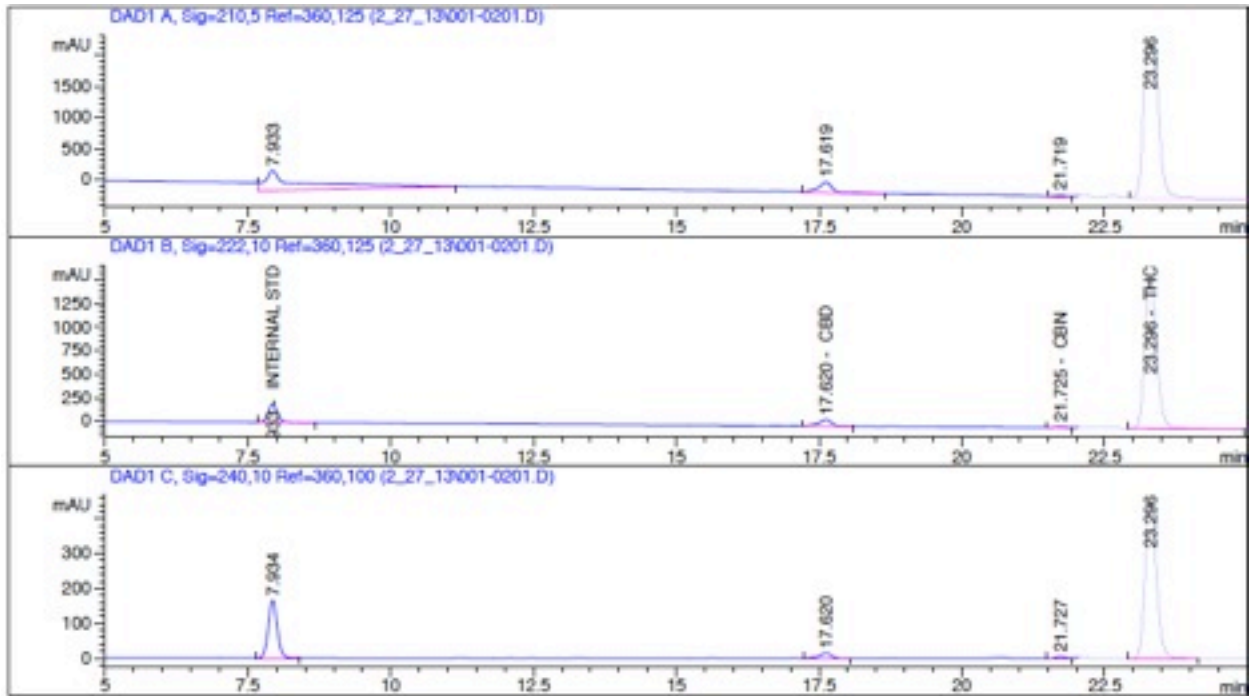
**Test Dates:** 2/20/2013 - 2/27/2013

---

<b>Assay(Test)</b>	<b>Result (CFU/g)</b>	<b>Status</b>
Total Count-Ex	<10,000	Pass
Yeast&Mold-Ex	<1,000	Pass
Enterococcus-Ex	<100	Pass
E.coli	<1	Pass
Salmonella	<1	Pass

---

\* Absent in 10 units is indicated by <0.1



-----  
 Internal Standard Report  
 -----

Sorted By : Retention Time  
 Calib. Data Modified : 2/27/2013 4:27:24 PM  
 Multiplier : 1.0000  
 Dilution : 1.0000

Sample ISTD Information:  
 ISTD ISTD Amount Name

#	% DRYWGHT	Name
1	10.00000	INTERNAL STD

Signal 1: DAD1 A, Sig=210,5 Ref=360,125  
 Signal 2: DAD1 B, Sig=222,10 Ref=360,125  
 Signal 3: DAD1 C, Sig=240,10 Ref=360,100

RetTime [min]	Sig	Type	Area [mAU*s]	Ant/Area ratio	Amount % DRYWGHT	Grp	Name
7.933	2	BB +I	2129.81519	1.00000	10.00000		INTERNAL STD
17.620	2	VP	1065.74170	1.53191e-1	7.66555e-1		CBD
21.725	2	BV	218.35826	0.00000	0.00000		CBN
23.296	2	VB	2.36298e4	1.83536e-1	20.36282		THC

Totals without ISTD(s) : 21.12937