

## TEST RESULTS

NEW MEXICANN / Z7 / Z7-4



# Results

## Gross and Microscopic Visual Analysis

Gross and microscopic analysis did not reveal the presence of any foreign organic matter including but not limited to: Insects, larvae or insect casings.



## Moisture Content

| Sample | Initial Weight | Final Weight | %Moisture by Weight | Date     | Time     |
|--------|----------------|--------------|---------------------|----------|----------|
| Z7-4   | 1.224 g        | 1.107 g      | 9.55                | 11/14/12 | 11:43 AM |

| Cannabinoid | % Dry Weight | % Moisture | % Actual Weight |
|-------------|--------------|------------|-----------------|
| CBD         | 9.044        | 9.55       | 8.180           |
| CBN         | 0.000        | 9.55       | 0.000           |
| THC         | 8.534        | 9.55       | 7.719           |

# Certificate of Analysis

17-Nov-2012

## Page Analytical Labs Microbiology Research and Quality Control

**Sample (Product) ID: NM\_Z7**

**Product (Group):** M-Excellent

**Batch/Lot:** 4

**Source:**

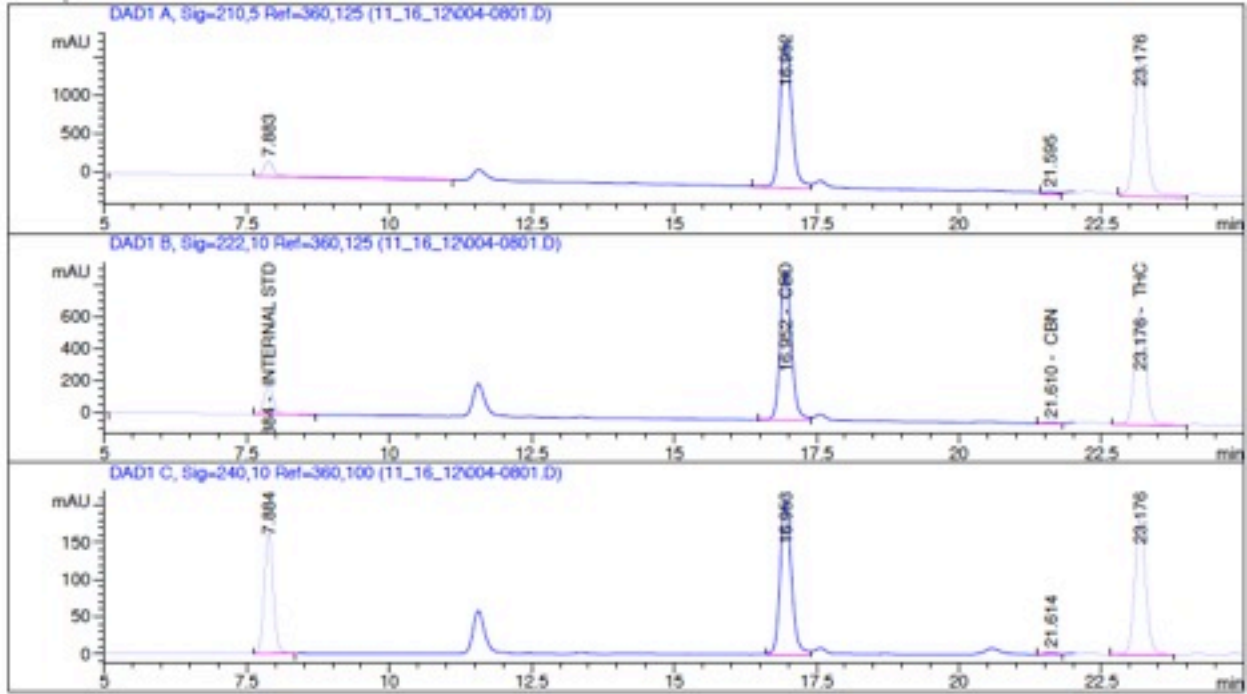
**Test Dates:** 11/10/2012- 11/17/2012

---

| <b>Assay(Test)</b> | <b>Result (CFU/g)</b> | <b>Status</b> |
|--------------------|-----------------------|---------------|
| Total Count-Ex     | <10,000               | Pass          |
| Yeast&Mold-Ex      | <1,000                | Pass          |
| Enterococci-Ex     | <100                  | Pass          |
| E.coli             | <1                    | Pass          |
| Salmonella         | <1                    | Pass          |

---

\* Absent in 10 units is indicated by <0.1



-----  
 Internal Standard Report  
 -----

Sorted By : Retention Time  
 Calib. Data Modified : 11/17/2012 11:30:03 AM  
 Multiplier : 1.0000  
 Dilution : 1.0000

Sample ISTD Information:

ISTD ISTD Amount Name  
 # % DRYWGHT

| # | % DRYWGHT | Name         |
|---|-----------|--------------|
| 1 | 10.00000  | INTERNAL STD |

Signal 1: DAD1 A, Sig=210,5 Ref=360,125  
 Signal 2: DAD1 B, Sig=222,10 Ref=360,125  
 Signal 3: DAD1 C, Sig=240,10 Ref=360,100

| RetTime [min] | Sig | Type  | Area [mAU*s] | Amt/Area ratio | Amount % DRYWGHT | Grp | Name         |
|---------------|-----|-------|--------------|----------------|------------------|-----|--------------|
| 7.884         | 2   | PP +I | 2114.79004   | 1.00000        | 10.00000         |     | INTERNAL STD |
| 16.952        | 2   | BV    | 1.28696e4    | 1.48611e-1     | 9.04377          |     | CBD          |
| 21.610        | 2   | PV    | 99.17530     | 0.00000        | 0.00000          |     | CBN          |
| 23.176        | 2   | VB    | 9980.64062   | 1.80824e-1     | 8.53388          |     | THC          |

Totals without ISTD(s) : 17.57765