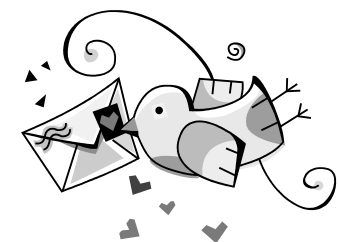
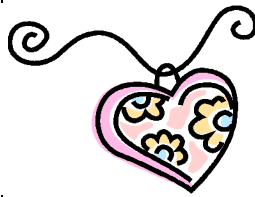


February 2012 Events Calendar



Sun	Mon	Tue	Wed	Thu	Fri	Sat
	<p>Serving Our Savior!</p>		<p>1 Chapel: Grade 2 Chapel Family 12 Ush- ers Triangles in Gym 7- 8:30PM</p>	<p>2 8th Gr. Parent Meeting at 7PM</p>	<p>3 100th Day of School Celebration</p>	<p>4 Reveal Worship at 5PM Family Fun Night 6- 8PM</p>
<p>5 Worship 8, 9:30 & 11AM Sunday School 9:30AM Second Grade sings at 8AM</p>	<p>6 Worship 7PM</p>	<p>7 Day School Board Meeting 6:30PM Culver's Kick Back in Tinley Park</p>	<p>8 Chapel: Grade 1 Chapel Family 13 Ush- ers</p>	<p>9 3-5 PM Faculty Meet- ing Open House 8AM- 2:30PM</p>	<p>10 Box Top Assembly at 10:30AM Pre-K3 Valentine's Day Parties at 9:30AM PTL Mother-Son Event at AllState Arena</p>	<p>11 Reveal Worship at 5PM Feed My Starving Children Family Event 11:30-1:30 or 2-4PM in Aurora</p>
<p>12 Worship 8, 9:30 & 11AM Sunday School 9:30AM M.G.C. sings at 8AM</p>	<p>13 Walcamp Week Worship 7PM</p>	<p>14 Walcamp Week Valentine's Day Parties: Pre-K4 at 10:30AM, Gr.K-5 at 1:45PM, Gr. 6-8 at 1:55PM</p>	<p>15 Walcamp Week Chapel: Mr. Stec & Mr. Lisius Chapel Family 14 Ush- ers</p>	<p>16 Walcamp Week Culver's Kick Back in Or- land Park</p>	<p>17 Walcamp Week Pre-K & Kind. Field Trip to Orland Bowl & Pizza</p>	<p>18 Reveal Worship at 5PM South Suburban Spelling Bee at Zion-Matteson - 9AM</p>
<p>19 Worship 8, 9:30 & 11AM Sunday School 9:30AM Voter's Assembly after 11AM Worship Walcamp Singers sing at 11AM</p>	<p>20 Worship 7PM No School</p>	<p>21 Faculty Meeting 3PM</p>	<p>22 Ash Wednesday Wor- ship 1:30 & 7PM - Pastors Trinity Sing- ers sing at 1:30PM</p>	<p>23</p>	<p>24 Spirit Day Pajama Day</p>	<p>25 Reveal Worship at 5PM Market Day pick-up at 11AM 1st Gr. & Pre-K 4 Assists 7th & 8th Gr. Dance 7-9PM</p>
<p>26 Worship 8, 9:30 & 11AM Sunday School 9:30AM Praise Bells play at 8AM Both 4th Grades sing at 11AM</p>	<p>27 Worship 7PM 7th Gr. Field Trip to Art Institute</p>	<p>28 Faculty Meeting 3PM</p>	<p>29 Lenten Worship 1:30 & 7PM - Pastors Pre-K4 & Kindergar- ten sing at 1:30PM</p>		<p>Chapel Offer- ings go to <i>Hearts For Je- sus</i></p>	<p>Hymn of the Month: LSB 610 <i>"Lord Jesus, Think on Me"</i></p>