



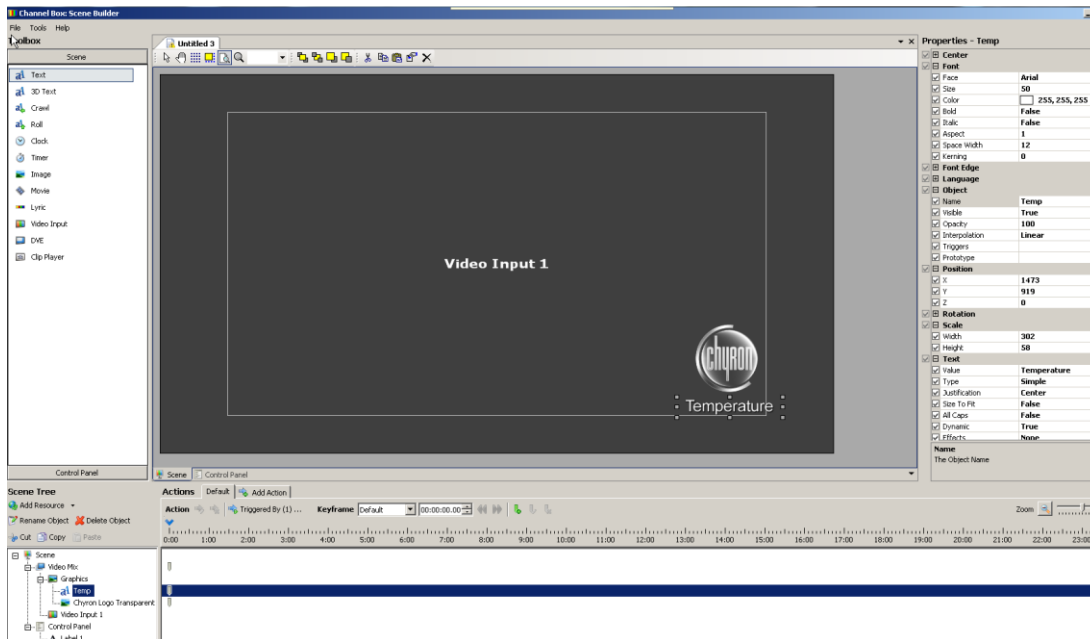
# Setting Up a Weather Feed in Channel Box

## Introduction

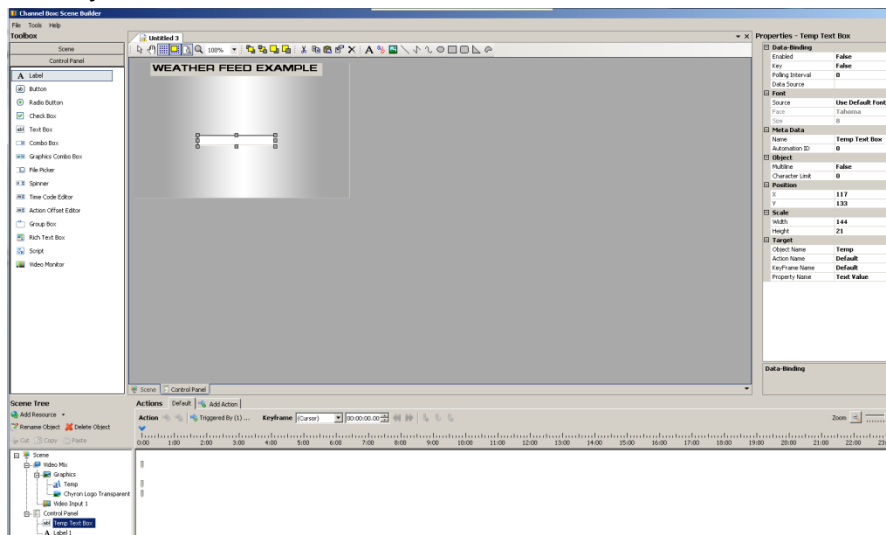
The following are instructions on how to set up a Weather Feed to import up to the minute temperature and weather data into a Channel Box scene using the built in Weather Feed applet.

## Directions

1. In Scene Builder, create the scene with a text field for the temperature to be fed to.



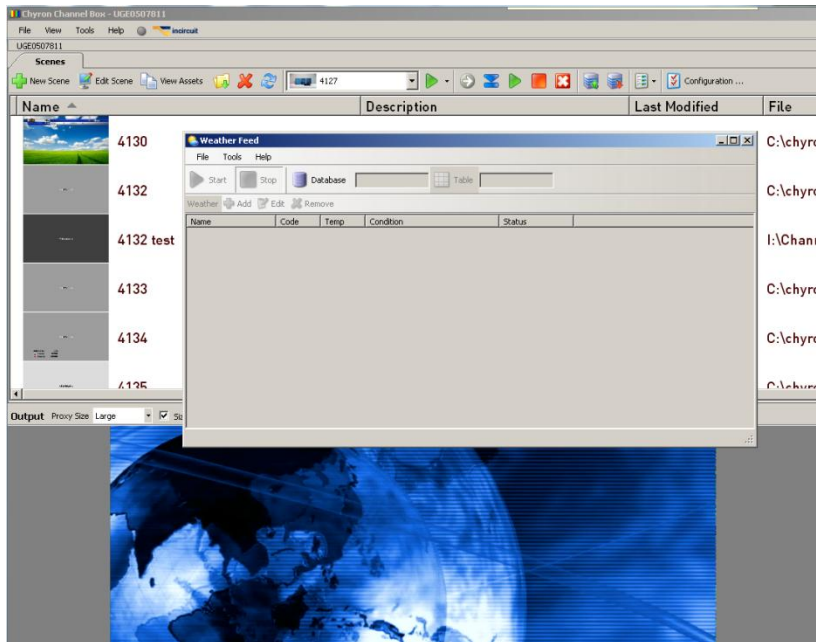
2. Drag the text field into the control panel to create a control panel text field to be linked to the text object in the scene.





# Setting Up a Weather Feed in Channel Box

3. In the Channel Box playout screen, go to Tools > Weather Feed to create your Weather Feed database.

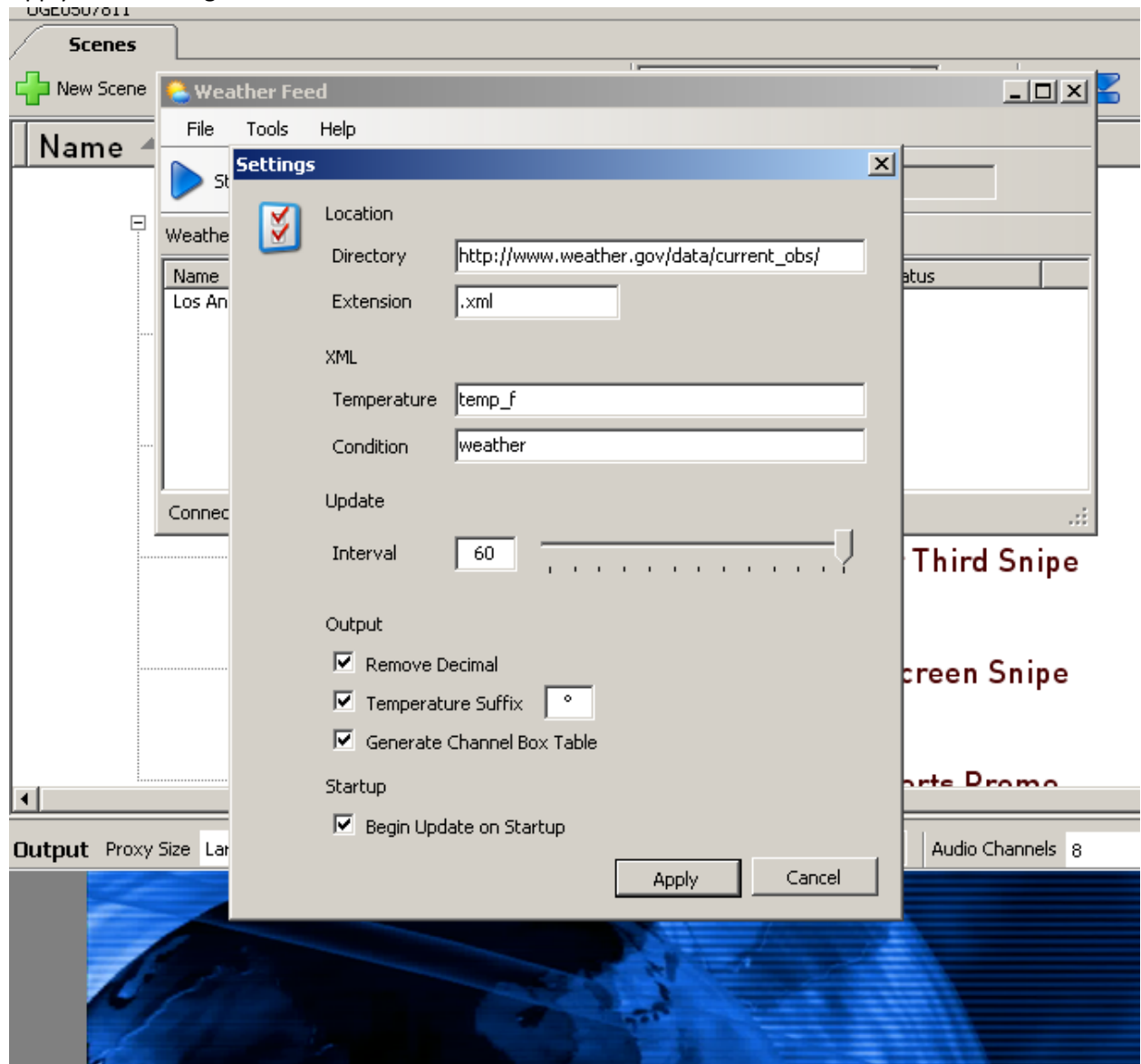


4. Under Tools> Settings you have two options for where the applet goes for its data. For US-only weather data, the directory should be set to [http://www.weather.gov/data/current\\_obs/](http://www.weather.gov/data/current_obs/).



## Setting Up a Weather Feed in Channel Box

Apply these settings.



For world weather data, you'll use Yahoo Weather and will need to change the following settings in Tools – Settings:

Directory: <http://weather.yahooapis.com/forecastrss?w=>

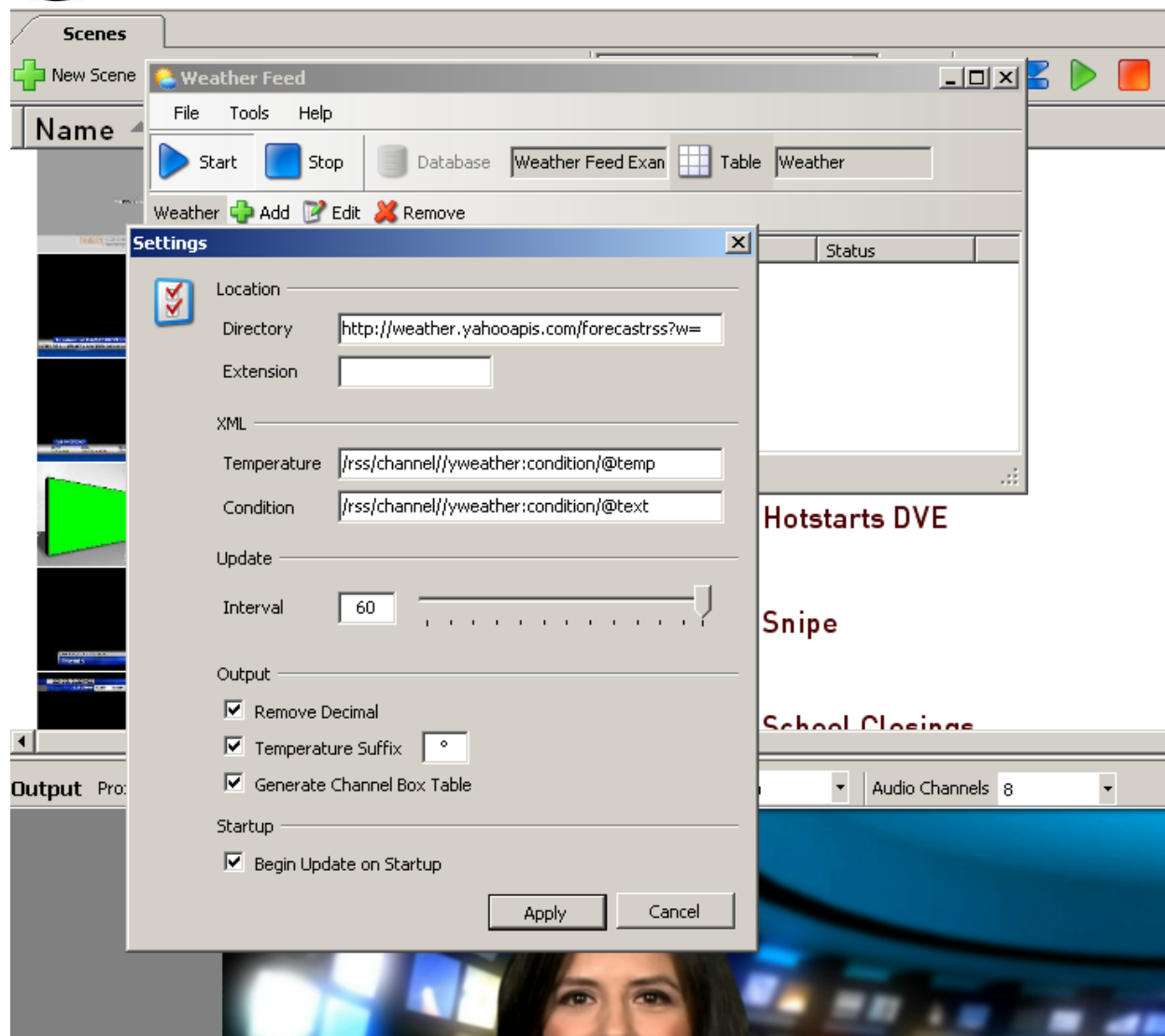
Extension: (blank)

Temperature: /rss/channel//yweather:condition/@temp

Condition: /rss/channel//yweather:condition/@text



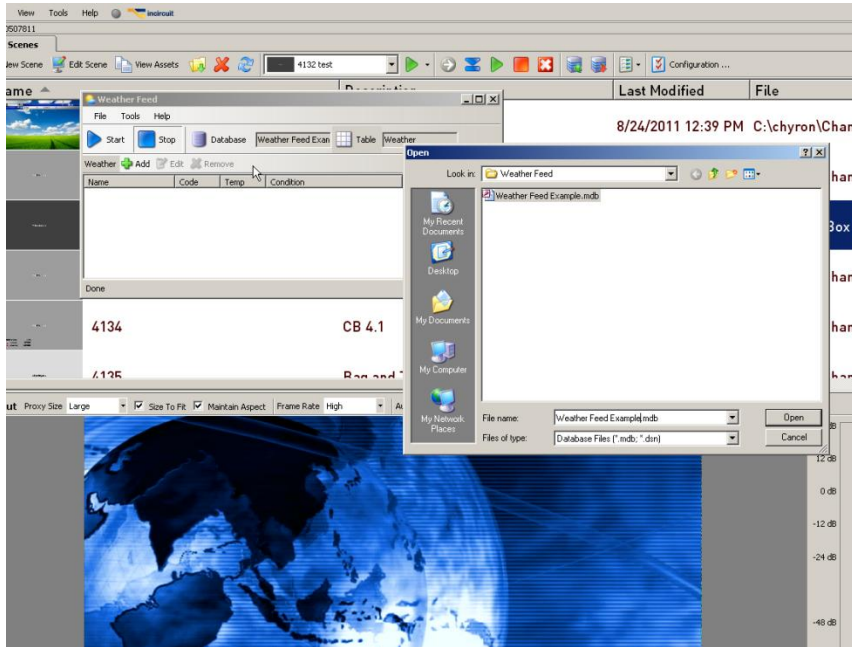
## Setting Up a Weather Feed in Channel Box



5. Create a new database at C:>Program Files > Chyron > current v of Channel Box > utils > Data Feeds > Weather Feed. Select it to open it. Feed will start.



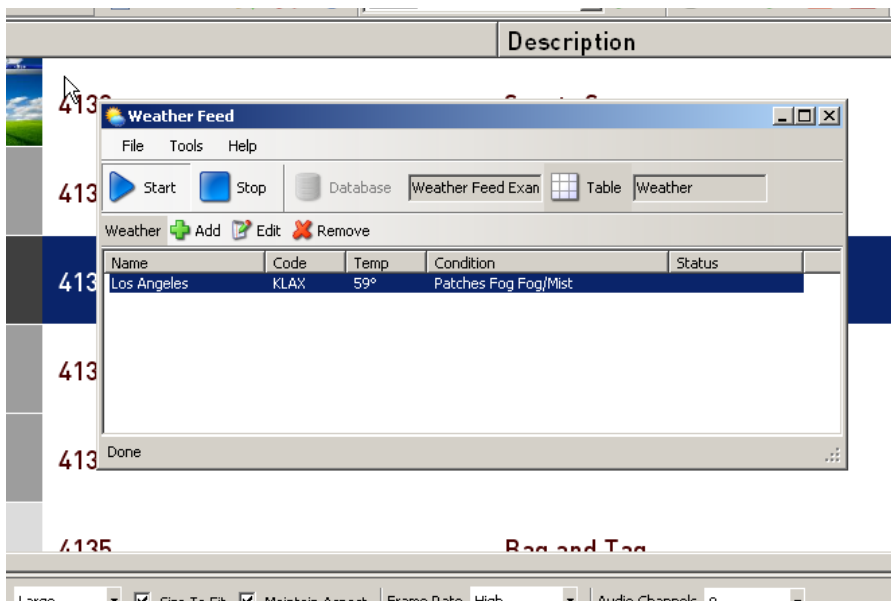
# Setting Up a Weather Feed in Channel Box



6. Press Add to access a city's weather.

For the first (weather.gov) setup, city codes can be accessed from the NOAA at this website:

[http://w1.weather.gov/xml/current\\_obs/](http://w1.weather.gov/xml/current_obs/). The code will be a four letter code like KLAX for LAX airport in Los Angeles, CA.



If you have your settings configured for Yahoo weather, you would go to <http://weather.yahoo.com> and search on your city or town to acquire the appropriate code from the URL yahoo displays.

For instance, if the desired city is San Antonio, a search on the yahoo weather page brings up:



# Setting Up a Weather Feed in Channel Box

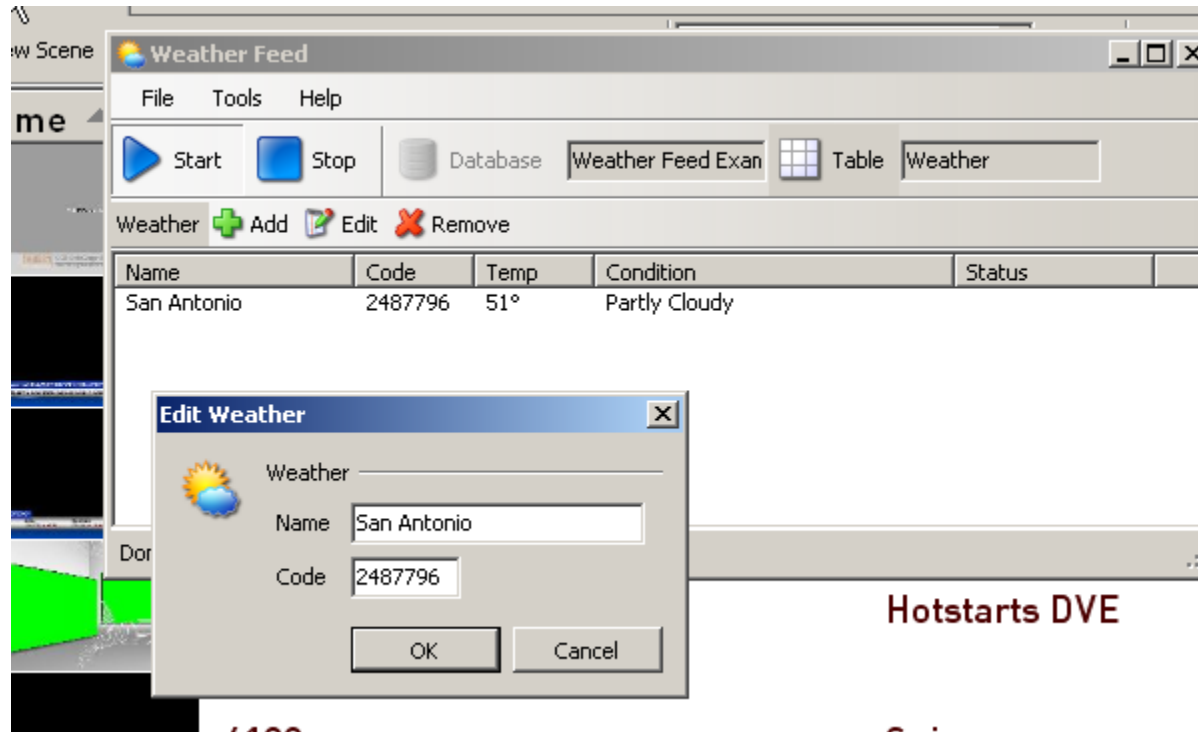
<http://weather.yahoo.com/united-states/texas/san-antonio-2487796/>

In this case the id is 2487796. This needs to be entered into the Code section for the city.

Searching on North Cornwall will take you to this URL

<http://weather.yahoo.com/england/cornwall-and-isles-of-scilly/north-cornwall-district-12695896/>

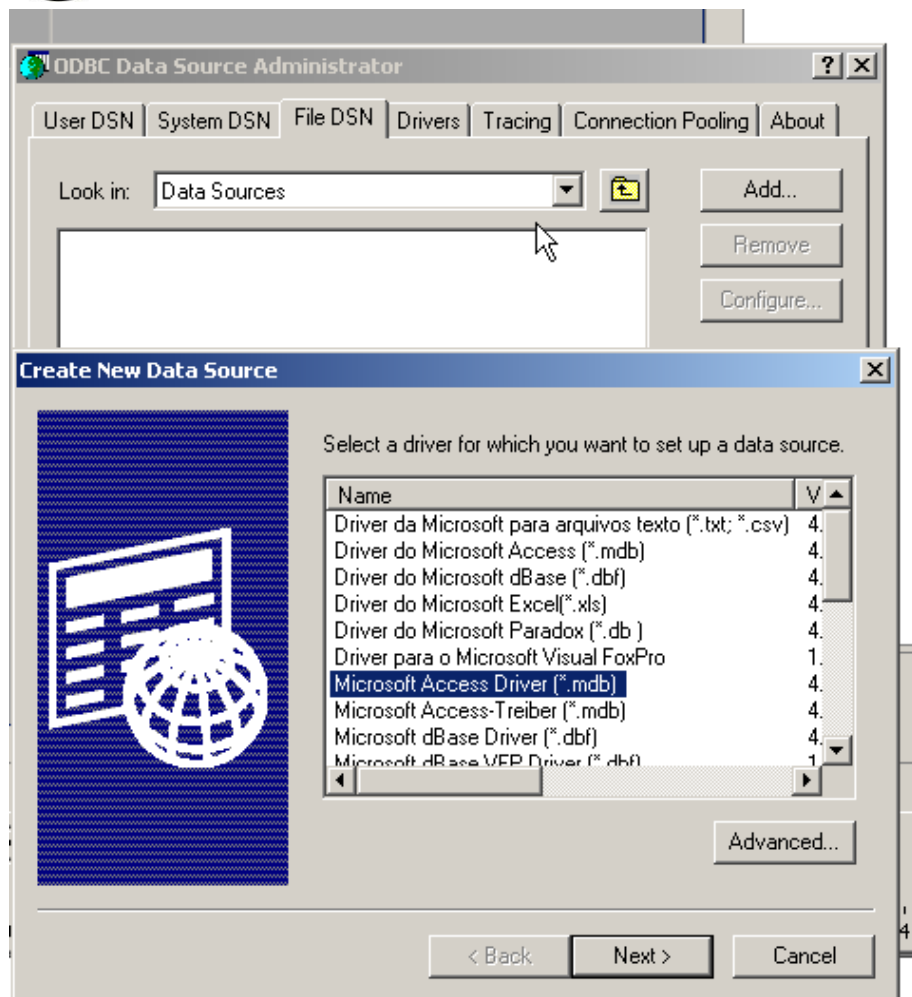
There the id number would be 12695896.



7. Go to Start > Settings > Control Panel > Administrative Tools > Data Sources (ODBC) to open the ODBC Data Source Administrator. Choose the File DSN tab. Choose Add, and then choose Microsoft Access Driver (.mdb).



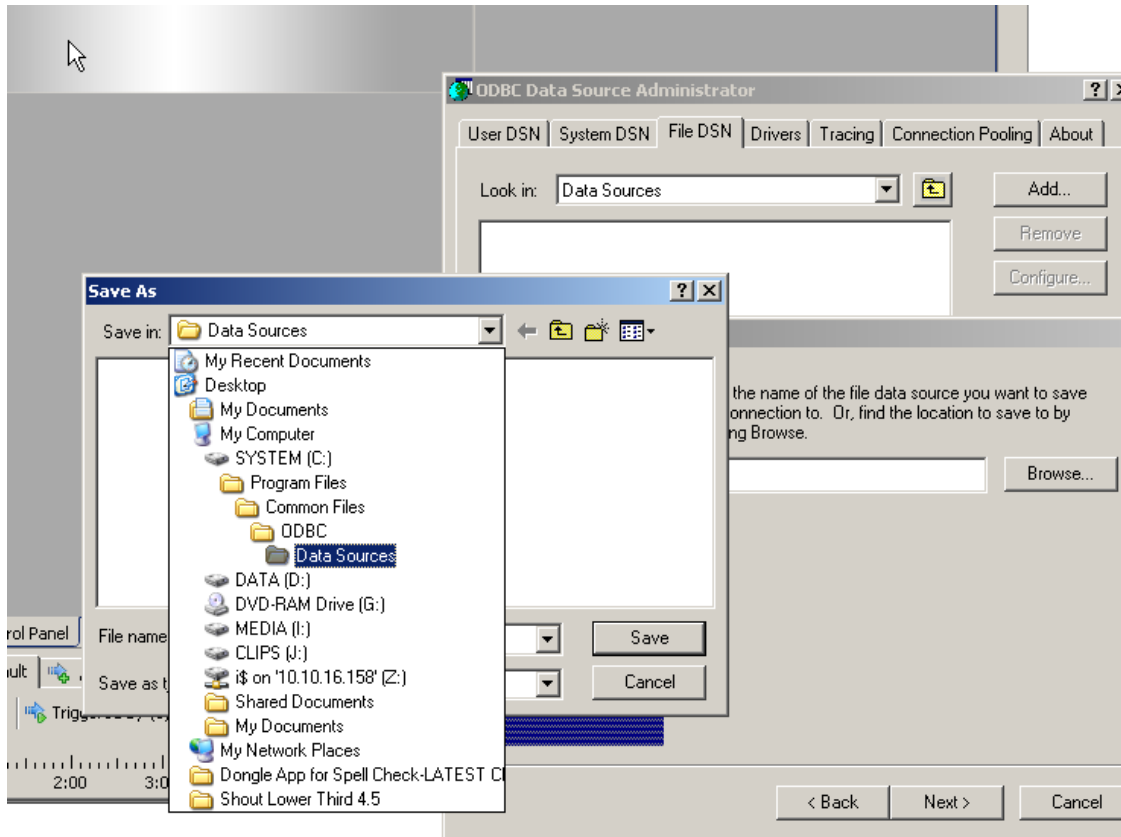
## Setting Up a Weather Feed in Channel Box



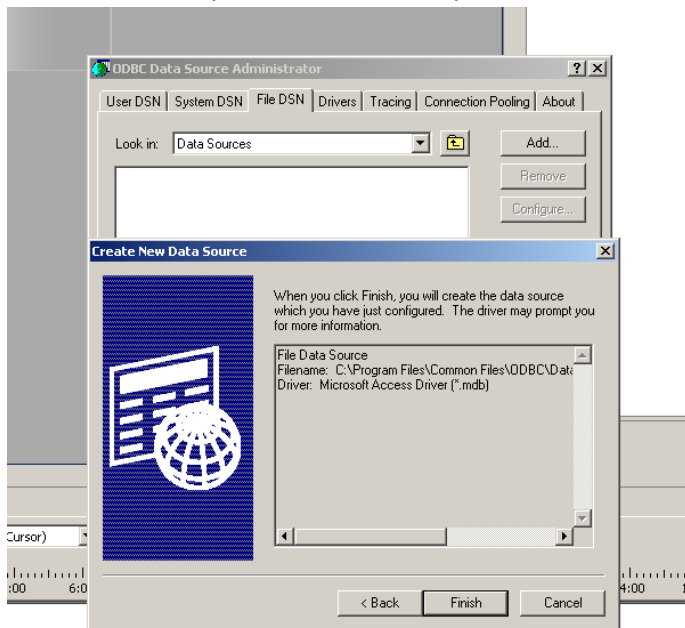
8. Create a new data source by giving this new DSN a name and save it in C: > Program Files > ODBC > Data Sources.



# Setting Up a Weather Feed in Channel Box



9. You will see that you have successfully created a data source.

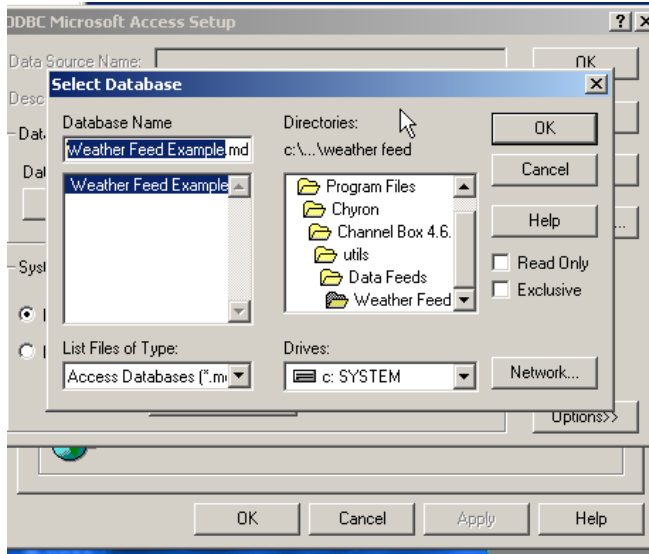




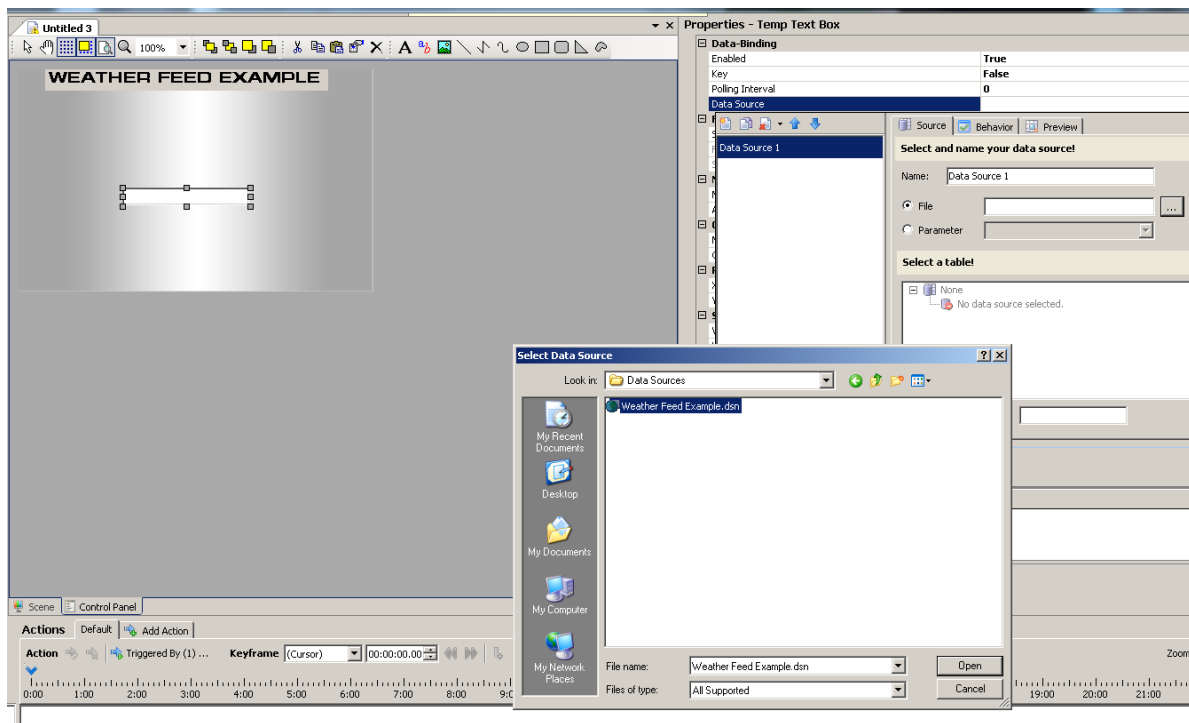


# Setting Up a Weather Feed in Channel Box

10. Then link the newly created File DSN to the database created through the Weather Feed applet by choosing Select and browsing to that file.



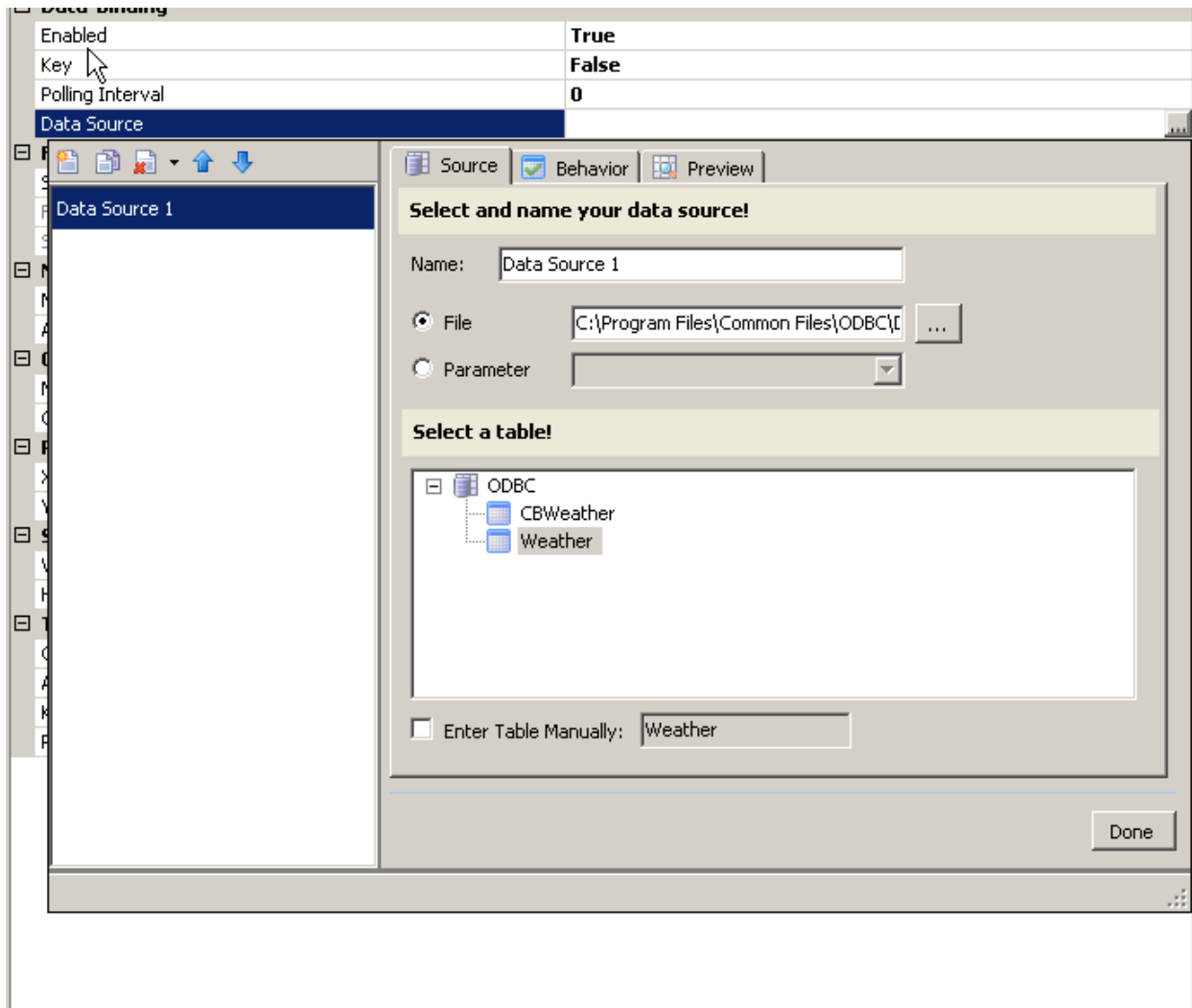
11. In Channel Box Scene Builder, select the text field created earlier in the Control Panel. Enable data binding and select a new data source, browsing to the newly created DSN.





# Setting Up a Weather Feed in Channel Box

12. Select Weather as your table.





## Setting Up a Weather Feed in Channel Box

13. In the Behaviour tab, choose "Temp" as your column.

The screenshot shows the 'Properties - Temp Text Box' dialog box. The 'Data-Binding' section is expanded, showing the following properties:

Enabled	True
Key	False
Polling Interval	0
Data Source	Data Source 1

The 'Behavior' tab is selected, showing 'Step 3: Define selection behavior.' The 'Match' section has the following options:

- Loop: 0 Iterations
- Date
- Time
- Column: Temp
- Row: 0
- Custom SQL Query

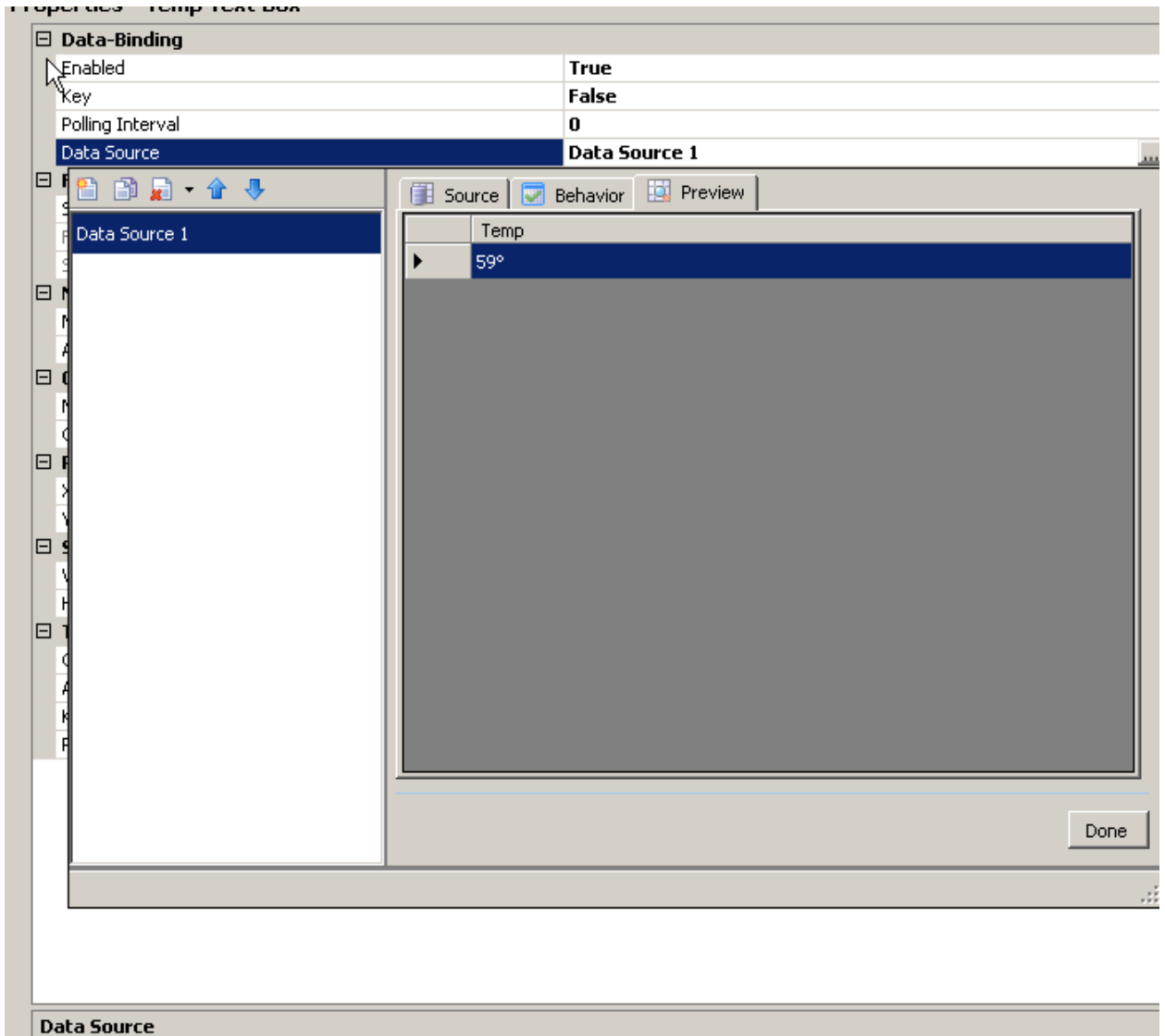
A 'Done' button is located at the bottom right of the dialog box.

**Data Source**  
Defines how data should be selected from the specified table.

14. You can preview the behavior under the preview tab.



# Setting Up a Weather Feed in Channel Box



15. Et voilà.



# Setting Up a Weather Feed in Channel Box

The screenshot displays the Chyron Channel Box software interface. At the top, there is a menu bar with options like 'File', 'Configuration...', and 'Configuration...'. Below the menu is a table listing various video assets:

Description	Last Modified	File
Race Car	8/24/2011 12:39 PM	C:\chyron\ChannelBox\Exp...
Green Screen Yoga	3/29/2012 2:30 PM	I:\Channel Box HD Demo\Vi...
Lower Third Snipe	4/15/2012 9:25 PM	I:\Channel Box HD Demo\Vi...
Full Screen Snipe	4/16/2012 9:35 AM	I:\Channel Box HD Demo\Vi...
3D Sports Promo	11/9/2012 2:43 PM	I:\Channel Box HD Demo\3...

Below the table, there are playback controls including 'Maintain Aspect', 'Frame Rate: High', and 'Audio Channels: 8'. The main video player area shows a blue-tinted image of the Earth with the Chyron logo and a temperature reading of '59°'. To the right of the video player is an audio level meter with a scale from -∞ dB to 24 dB. The top right corner of the interface shows a 'weatherfeed example' window with a 'WEATHER FEED EXAMPLE' title and a green progress bar. The bottom right corner displays 'Play completed (Stream)' and the time '10:26:12 AM'.