

Ultra Music Festival 2013 – Traffic Plan

Dates of Implementation:

Friday, March 15 – Monday, March 18 &

Friday, March 22 – Monday, March 25

Times of Implementation:

Friday at 9am – Monday at 6am (Both Weekends)

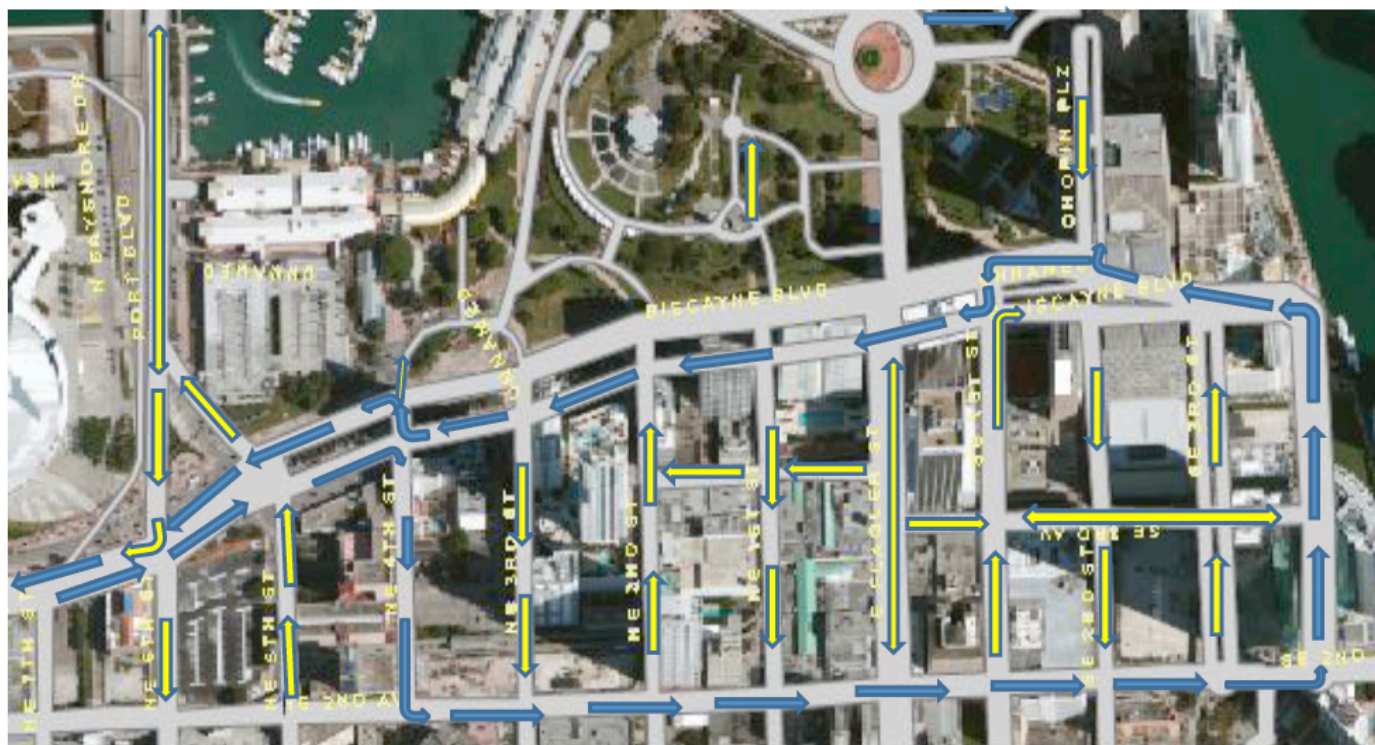
Any vehicular traffic traveling southbound on Biscayne Blvd will be forced to turn right on NE 4th Street. Traffic will go west until NE 2nd Avenue where you will turn left and continue southbound on NE 2nd Avenue.

All side streets will remain accessible to traffic.

The southbound lanes of Biscayne Blvd will be used for northbound traffic from SE 1st Street to NE 4th Street, where northbound traffic will be redirected to the northbound lanes.



City of Miami Police Department/Special Events Unit 2013 ULTRA MUSICFESTIVAL



Traffic Flow