

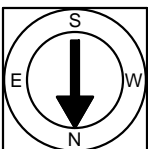
First Floor Plan
Ceiling Height = 10'-8"

428 Marlborough Street, Unit 1
Boston, MA 02115



Scale 1/8" = 1'-0"

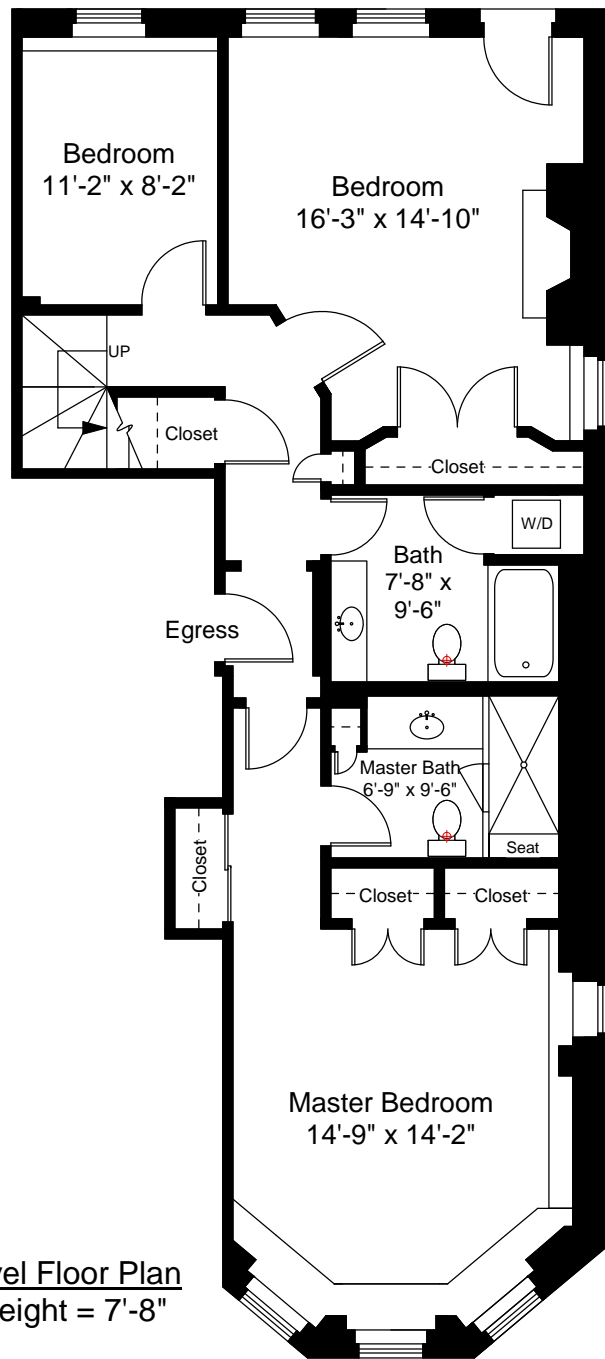
1



Completed: April, 2010

Note: Dimensions are not
guaranteed and are provided
for informational purposes only.


NEW ENGLAND
—FLOOR PLANS—
& PHOTOGRAPHY
(800) 328-0217



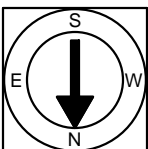
Lower Level Floor Plan
Ceiling Height = 7'-8"

428 Marlborough Street, Unit 1
Boston, MA 02115



Scale 1/8" = 1'-0"

2



Completed: April, 2010

Note: Dimensions are not
guaranteed and are provided
for informational purposes only.

NEW ENGLAND
—FLOOR PLANS—
& PHOTOGRAPHY
(800) 328-0217