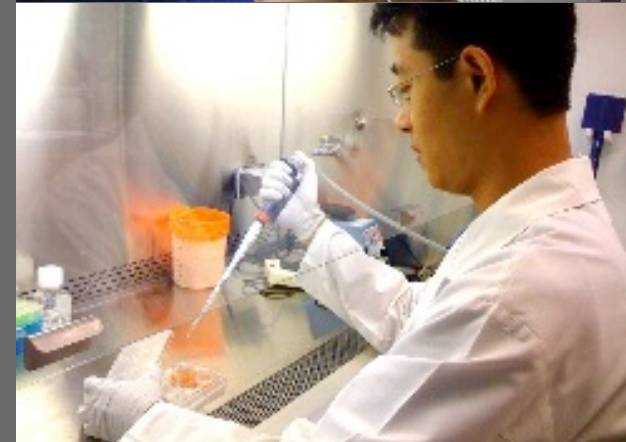




Strategic Opportunities of a Shared Health Education Campus

Shirley Dugdale, AIA
Director, Learning Environments

DEGW





Health Education

Allied Health Care is embedded in the basic health care value chain of:

- Life science education and research
- Clinical training
- Clinical care
- Public health outreach

Allied Health Care Professions

- provide for the spectrum of human health care beyond the professions of medicine, dentistry, and nursing
- include a wide range of professions: e.g. occupational therapy, podiatry, chiropractic medicine, physical therapy, kinesiology



Strategic Advantages of Collaboration

- **Interdisciplinary collaboration** focused on caring for the whole person; people's needs don't always fit into disciplinary silos
- **Advance overall health care quality**
- The co-location of multiple allied health disciplines enables more **opportunities to interact across disciplines** and advance patient research and care in a holistic manner
- Many allied health professionals interact with each other throughout multiple facets of patient care (i.e. occupational therapists routinely interact with speech/language pathologists)
- **Interdisciplinary training is increasingly required** in academic allied health care programs (<http://www.ncbi.nlm.nih.gov/pubmed/19753390>)
- **A combined allied health care campus further facilitates teamwork opportunities** – an important component of allied health education (<http://www.ncbi.nlm.nih.gov/pubmed/18080966>)
- Multiple ways to support the **different learning styles of students** in the various allied health profession and build teamwork (<http://www.ncbi.nlm.nih.gov/pubmed/16252681>)



Strategic Advantages of a Health Education Campus

Efficiency of Space Use

Synergies of Co-Location

Educational Benefits

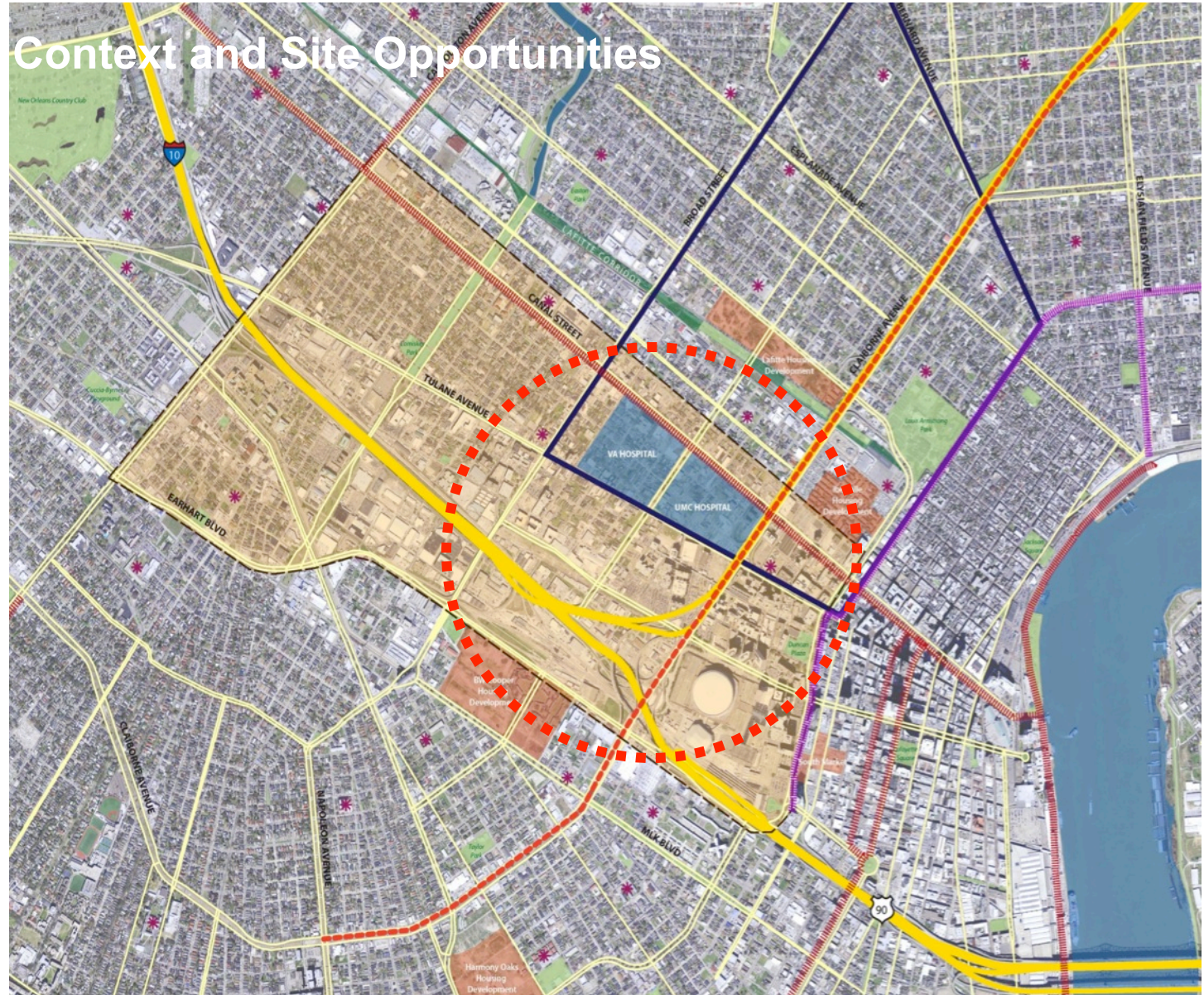
Opportunities to Collaborate for Innovation

Greater Technology Capacity

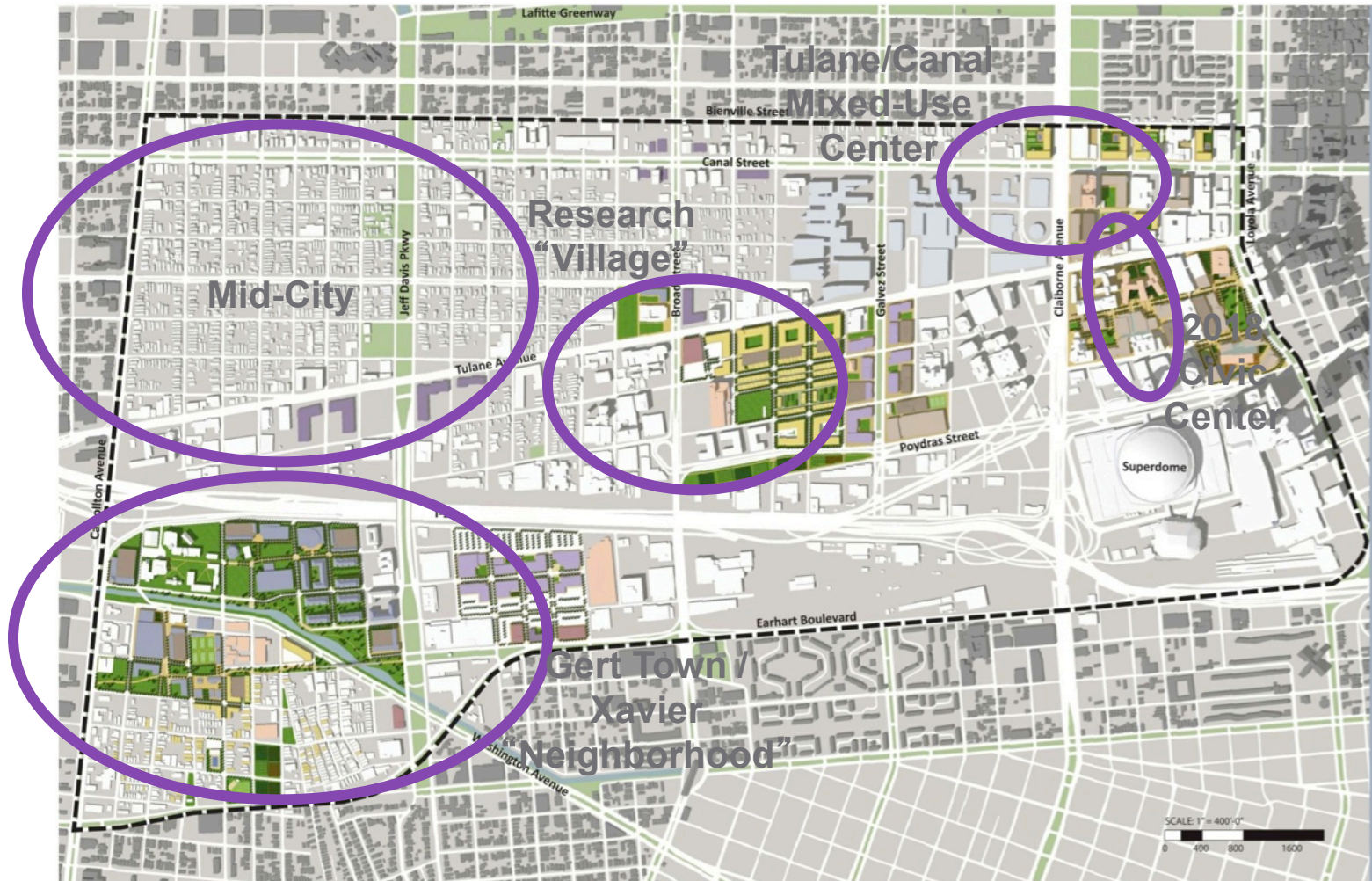
Efficiencies in Shared Support Services

Shared Commons and Informal Learning Space

Context and Site Opportunities



Convergence at a New Campus





Efficiency of Space Use



- **Less space** required to be constructed than would be on separate campuses
- **Shared investment cost**
- Space used more intensively over time: **Use Less, More**
- **More shared and less owned/ individual space**, balanced with more choice of bookable settings
- **Facilities management efficiencies**
- **Program staffing efficiencies**, reduced administration
- More sustainable use of resources



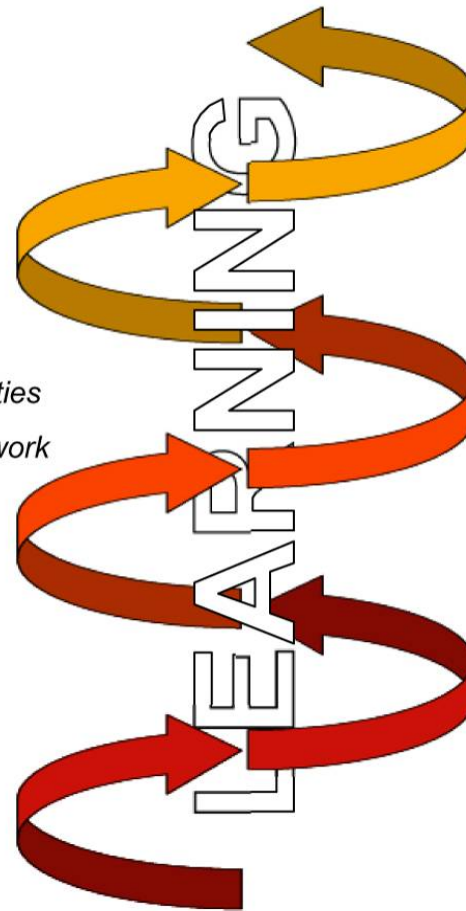
Synergies of Co-Location

- Being **part of a mixed health care community**, with exposure to other professions, their activities and tools
- **Common ground** – hubs and zones for interaction
- **Proximity to hospitals and clinics** – for ease of access to on –the-job experience
- **Convenience to discover more opportunities to collaborate**, go after grants together to address key challenges

Forces on Learning

CHANGES IN LEARNING STYLES

- Didactic to active learning modalities
- Individual to collaborative group work
- PBL/Case-based learning
- Lifelong learning
- Portfolio development
- Virtual learning communities
- Game based learning



FORCES FOR INTEGRATION

- Just-in-time/On-the-job learning
- Interdisciplinary exploration for innovation
- Internships & experiential learning
- Fused learning patterns
- Convergence of media & IT technologies

LEARNING TOOLS & SUPPORT SYSTEMS

- Podcasts, streaming video & web delivery
- Rich multimedia, image sharing
- Portfolios
- Simulation & augmented reality experiences
- Proliferation of mobile devices
- Course management systems
- Wikis & collaborative tools
- Messaging & aggregation tools

DEGW



Supporting Future Pedagogy

DIDACTIC



Lecture Hall

HYBRID



Case Study Room

COLLABORATIVE



Learning Studio

DISCUSSION



Seminar Room

CONNECTIVE



Meeting Room

EXPERIMENTAL



Technology
Sandbox

- Learning activity-based planning
- Envisioning future learning experiences
- From planning principles to a “palette” with a range of settings
- Pilots for early testing to inform planning



New Ways of Learning



- Growth in simulation based experiences: role playing, haptic devices
- Training in team dynamics
- Computer based modeling
- Blended models, mixing face-to-face with online learning



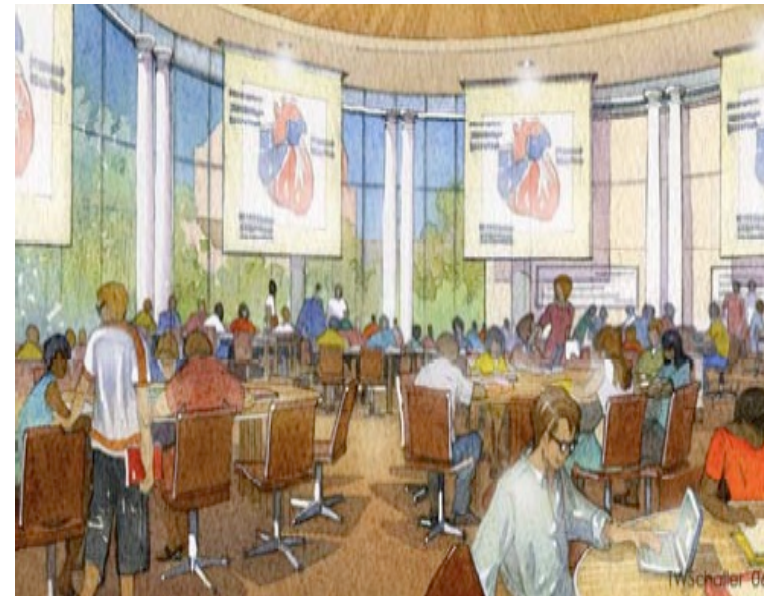
Educational Benefits

- **Shared teaching spaces** – reduced investment cost for individual institution for the amount of space developed
- **More types of teaching settings** can be provided - better choice of venues for faculty
- **Better classroom utilization**
- **Rethink scheduling expectations** and assumptions
- **Identify redundancies** and rationalize program distributions
- **Spatial implications of blended courses**
- **Potential for higher quality space**
- Prestige from **association with consortium** of key institutions

New Types of Learning Spaces



*Univ. of Wisconsin-Madison Health Sciences Learning Center
Multipurpose Teaching Lab*



*Univ. of Virginia Medical Education Building
Learning Studio*

- Move to team based learning, implications for planning
- Shifting easily from lecture to small group work in same space
- Integrating virtual resources, team screens for collaboration

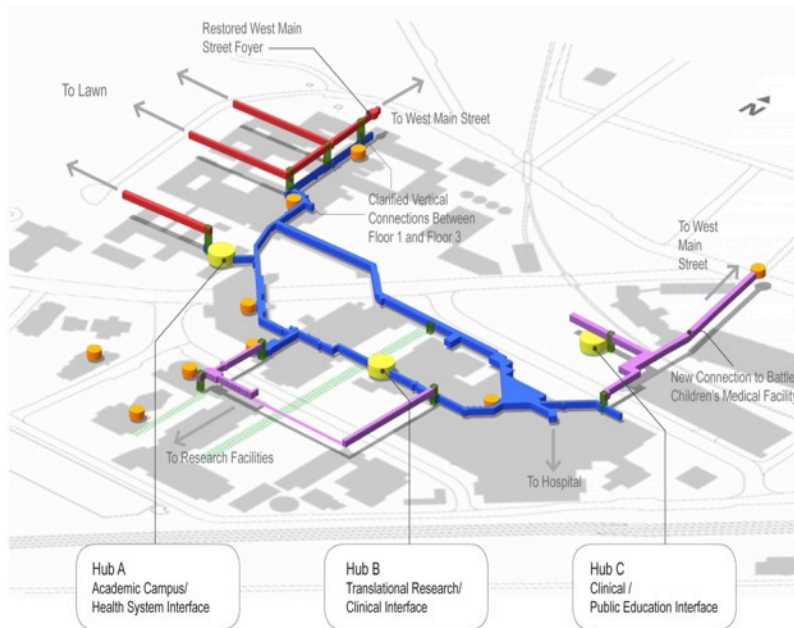


Opportunities to Collaborate for Innovation

- **Shared Simulation space** use, for physical therapy, occupational therapy, nurses aides, etc.
- **More exposure to healthcare team interactions** in simulated ICUs, ERs or patient rooms.
- **Team based learning opportunities** - coordinated programs can explore joint learning experiences
- **Access to shared experimental teaching spaces** – as stimulus to move to more active learning settings
- Combined resources from legitimate entities may be better equipped to **attract NIH or NSF research funding**



Enhancing Collaboration and Interdisciplinary Work

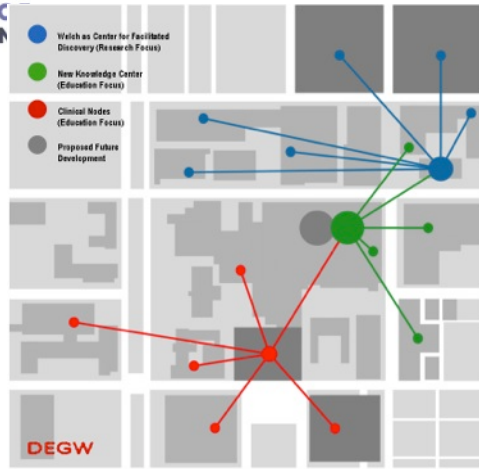


- Exploiting circulation nodes as hubs for collaboration
- Bench to Bedside opportunities
- Collaboration with colleagues in remote locations



BIODISTRICT
NEW ORLEANS

Efficiencies in Support Services



- Economies of scale – for equipment, staffing, integrated services
- Academic technology/AV/IT services
- Shared infrastructure costs
- Levering technology in new ways



Visualization and Computation



- Data intensive research generated by instrumentation
- Growing need to visualize complex data
- Technology visioning process

Perceptive Pixel



Create Community and a Sense of Place



Johns Hopkins Armstrong Building



Northwestern Univ.

- Central gathering space as destination
- Learning community spaces
- Transparency and making activity visible



Shared Informal Learning Spaces



- Developing a vibrant “Learning Landscape” for student learning experiences
- Commons and library as shared resources
- Study zones and distributed informal learning space
- Food facilities – power of food to bring people together



Study and Collaborative Settings



- Distributed study settings, variety and choice
- Collaborative settings
- Learning support, help desks and research services available

Cafes and Food Services



Northwestern Univ. School of Medicine



Johns Hopkins Armstrong Med Ed Bldg

- Mixing ground attracting faculty, students, staff
- Equipped for mobile work with power distribution
- Opportunity for leadership in healthy fare



Examples of Shared Education Centers

- Empire State Public Health Training Center - Univ. at Buffalo with Univ. at Albany School of Public Health
- Kansas Univ. Medical Center - Univ. of Kansas School of Allied Health with the School of Medicine and School of Nursing, and local scientific community
- Higher Education Center for Rogue Community College and Southern Oregon University
- Higher Education Centers, Maryland
- Higher Education Center, Roanoke
- Higher Education Center, San Diego
- Higher Education Center, Southwest Virginia
- Auraria Higher Education Center (to be described in later talk)