

Memo

To: City of Tumwater, Jeff Vrabel, Facilities Manager
From: Kevin M. McFarland, Contracted Tree Protection Professional
Date: 4/16/2013
Re: City Hall Cherry Tree Evaluation

Upon your request, I have conducted an evaluation of 9 trees located within the Tumwater City Hall frontage at 555 Israel Rd SW. The trees have become of concern due to the damage of adjacent infrastructure and apparent disease problems.

Findings

The trees are located to the north of the building at the main entrance, (please see Appendix 1). Photographs have been included as well.

Tree ID #	Species	Trunk Diameter (inches)	Comments	Recommendation
1	Kwanzan Cherry	8	Tree is in overall fair condition; roots are lifting the adjacent sidewalk panels	Remove Tree
2	Kwanzan Cherry	6	Tree is in overall poor condition; decay is present within the main stem @ 2' above grade; canker and associated decay is on the stem @ 4'; roots are lifting the adjacent sidewalk panels	Remove Tree
3	Kwanzan Cherry	7	Tree is in overall fair condition; sunscald damage along the trunk; infected with Brown Rot; roots are lifting and cracking the sidewalk	Remove Tree
4	Kwanzan Cherry	16	Tree is in overall fair condition; roots are lifting and cracking the sidewalk	Remove Tree
5	Kwanzan Cherry	15	Tree is in overall poor condition; infected with Brown Rot and infested with cherry bark tortrix; roots are lifting the sidewalk panels	Remove Tree
6	Kwanzan Cherry	6	Tree is in overall fair condition; infected with Brown Rot; roots are lifting the sidewalk panels	Remove Tree

Tree ID #	Species	Trunk Diameter (inches)	Comments	Recommendation
7	Kwanzan Cherry	5	Tree is in overall poor condition; infected with Brown Rot, several cankers on the branches, tree is poorly rooted	Remove Tree
8	Kwanzan Cherry	12	Tree is in overall poor condition; infected with Brown Rot and infested with cherry bark tortrix; roots are lifting the sidewalk panels	Remove Tree
9	Kwanzan Cherry	15	Tree is in overall fair condition; infected with Brown Rot; roots are lifting and cracking the sidewalk	Remove Tree

Explanations

Brown Rot: This fungus organism (*Monilinia fructicola*) originally attacks the tree through the flower buds as they begin to open in the spring. Once established in the bloom, the infection may spread to twigs and shoots. Infected twigs develop sunken cankers that may have gumming at the margins. Leaves on the twig will die but will stay attached to the twig. Pruning, good sanitation and chemical application can help control the disease but our wet springs make it very difficult.

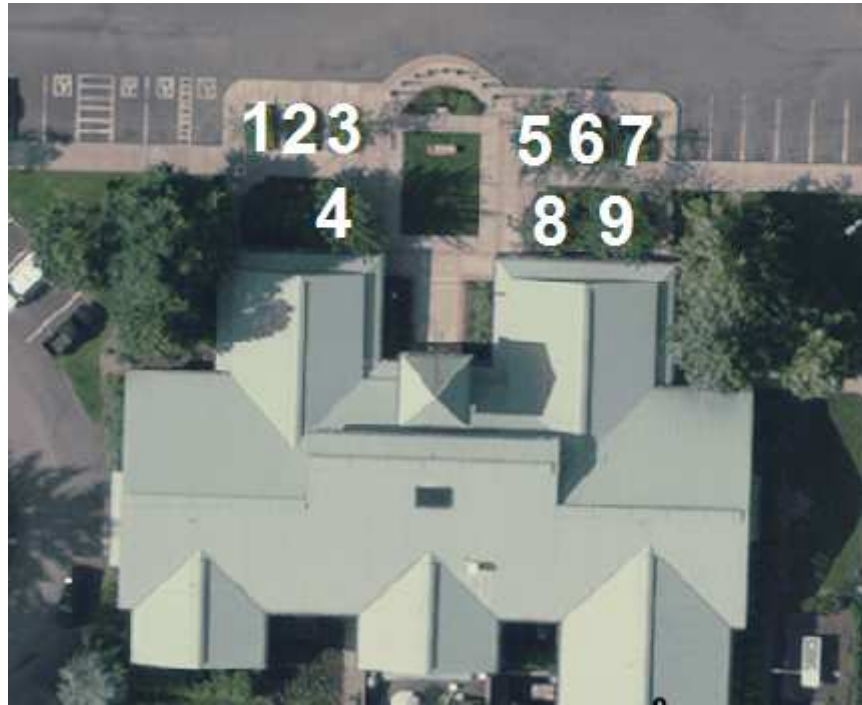
Cherry Bark Tortrix: The larvae of this insect (*Enarmonia formosana*) feed on the bark and outer sapwood of cherry trees. They also create tunnels between the bark and cambium layer. Infection is easily recognizable by the reddish-orange color frass near the entrance locations. The feeding reduces or excludes the transportation of nutrients to the roots. This can result in the dieback of new and old wood and lead to eventual death. It also opens up the tree to secondary pests. Chemical application can control the pest but timing is very important.

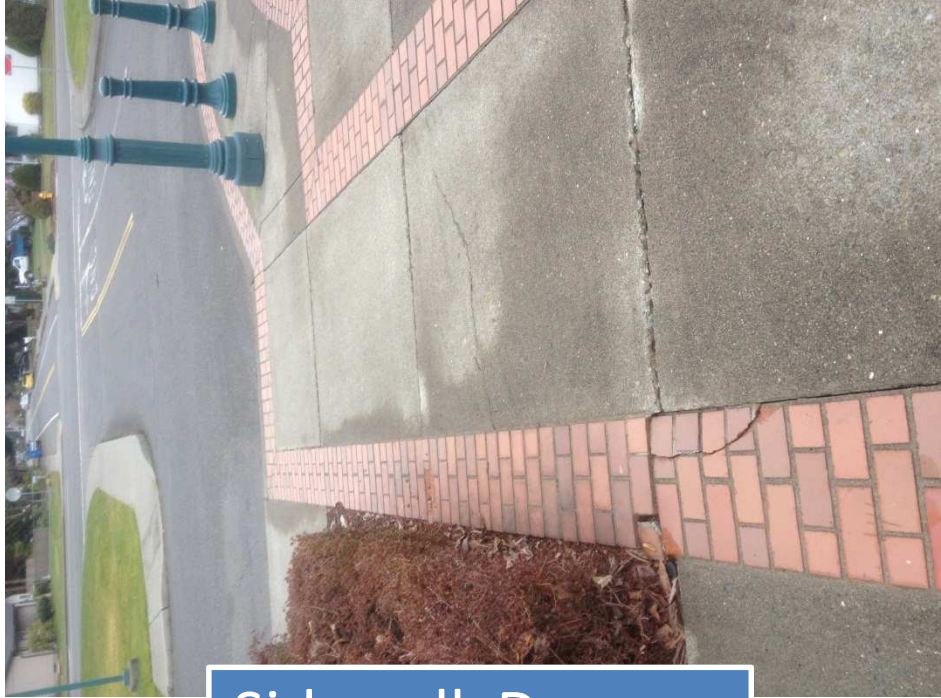
Comments

In addition to the findings described above, these trees are incredibly inappropriate for the site. They are notorious for causing damage to surrounding infrastructure with their aggressive shallow roots. This species should never be planted in an area within such close proximity to hard surfaces, especially with a high level of use such as a city hall. These trees are a liability which will only worsen as they grow. Removal is highly recommended.

If you should have questions, please feel free to contact me at 870-2511 or suf1234@comcast.net

Appendix 1. Tree Location Map





Sidewalk Damage



Tree #2