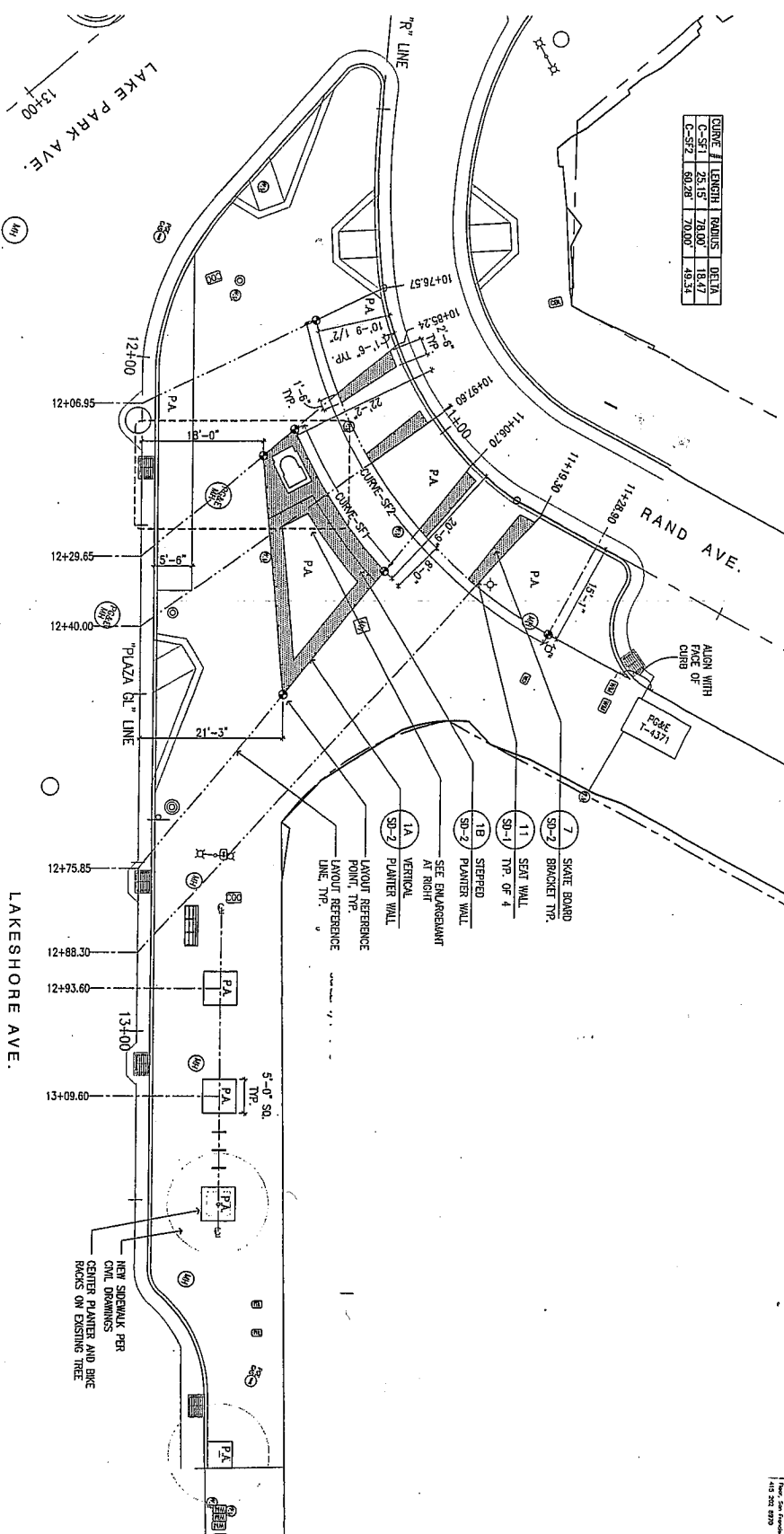


CURVE #	LENGTH	RADIUS	DETA
C-57	28.15	70.00	18.47
C-57	89.28	70.00	49.57



CITY OF OAKLAND
 DEPARTMENT OF PUBLIC WORKS
 500 MICHIGAN STREET, SUITE 200
 OAKLAND, CA 94612
 (510) 230-5000 • FAX (510) 230-7227

LAKE SHORE / LAKE PARK AVENUE
 COMPLETE STREETS PROJECT

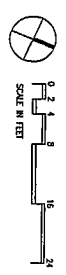


PROJECT ENGINEER	NO.	DATE	BY	REFERENCE
PRINAKHAWAN				
CHECKED BY				
DESIGNED BY				
DRAWN BY				

SITE FURNITURE
PLAN
PLAZA LAYOUT

PROJECT NO.
C390010

SCALE: 1/8" = 1'-0"
DATE: 1/10/2011
SHEET NO.
SF-2
23 OF 41





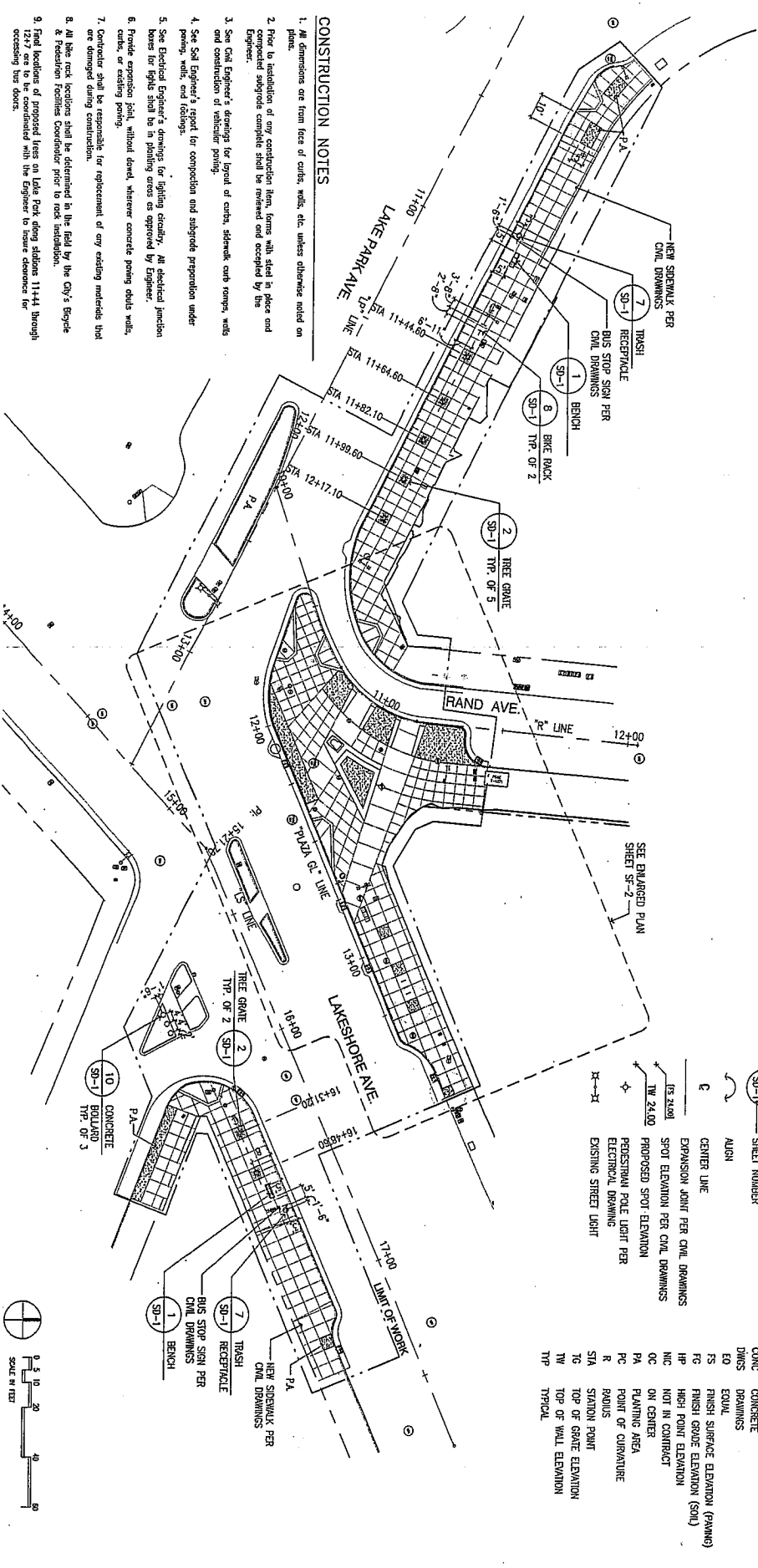
CITY OF OAKLAND
DEPARTMENT OF ENGINEERING AND CONSTRUCTION
200 MARKHAM AVENUE, SUITE 200 • OAKLAND, CA 94612
(415) 778-7272 • FAX (415) 778-7273

LAKE SHORE/LAKE PARK AVENUE
COMPLETE STREET'S PROJECT



PROJECT ENGINEER	DATE	BY	REFERENCE
FRANK ANAVIN			
CHECKED BY			
DESIGNED BY			
DRAWN BY			

PROJECT NO.	SHEET NO.
C390010	SF-1
SCALE: 1"=50'	DATE: JAN 2011
22	41



CONSTRUCTION NOTES

1. All dimensions are from face of curbs, walls, etc. unless otherwise noted on plans.
2. Prior to installation of any construction item, forms with steel in place and concrete, sidewalks complete shall be reviewed and approved by the Engineer.
3. See Civil Engineer's drawings for layout of curbs, sidewalks, curb ramps, walls and construction of vehicular paving.
4. See Soil Engineer's report for compaction and subgrade preparation under paving, walls, and footings.
5. See Electrical Engineer's drawings for lighting strategy. All electrical junction boxes for lights shall be in pooling areas as approved by Engineer.
6. Provide expansion joint, without dowel, wherever concrete paving abuts walls, curbs, or existing joints.
7. Contractor shall be responsible for replacement of any existing materials that are damaged during construction.
8. All tree locations shall be determined in the field by the City's Biologist.
9. Final locations of proposed trees on Lake Park along station 11+44 through 12+7 are to be coordinated with the Engineer to insure clearance for existing trees.

CONSTRUCTION LEGEND

1	DETAIL NUMBER
SD-1	SHEET NUMBER
1	ALIGN
1	CENTER LINE
1	EXPANSION JOINT PER CIVIL DRAWINGS
1	SPOT ELEVATION PER CIVIL DRAWINGS
1	PROPOSED SPOT ELEVATION
1	PEDESTRIAN POLE LIGHT PER ELECTRICAL DRAWING
1	EXISTING STREET LIGHT
1	NEW SIDEWALK PER CIVIL DRAWINGS
1	CONCRETE
1	DWGS
1	EQUL
1	FINISH SURFACE ELEVATION (FINISH)
1	FC
1	FINISH GRADE ELEVATION (SOL)
1	HP
1	HIGH POINT ELEVATION
1	NOT IN CONTRACT
1	ON CENTER
1	PA
1	PLANTING AREA
1	POINT OF CURVATURE
1	PC
1	RAIUS
1	STATION POINT
1	STA
1	TOP OF GRADE ELEVATION
1	TOP OF WALL ELEVATION
1	TYP





CITY OF OAKLAND
DEPARTMENT OF ENGINEERING AND CONSTRUCTION
540 HOWARD STREET, 15TH FLOOR
OAKLAND, CA 94612
(510) 233-3337 FAX (510) 233-2222

**LAKESHORE/ LAKE PARK AVENUE
COMPLETE STREETS PROJECT**

BID DOCUMENT



PROJECT ENGINEER	FRANK NIVIANI
CHECKED BY	A. GILMUSCO
DESIGNED BY	F. NIVIANI
DRAWN BY	F. NIVIANI

No.	DATE	BY	REFERENCE

**CONSTRUCTION
PLAN**
SHEET 2 OF 2

PROJECT NO. **C390010**
SHEET NO. **C-2**
SCALE: 1"=20'
DATE: MAR 2011

DRAWING NAME: Publications_and_Team\Projects\2009\010 Lakeshore Complete Streets CAD\02\Sheet2009.dwg
PLOT DATE: 04-05-11
PLOT BY: ewer

NOTES:

1. SEE N SHEET FOR APPROVAL, NOTES, ABBREVIATIONS, AND LEGEND.
2. SEE L SHEET FOR SURVEY CONTROL, DATA, AND LAYOUT CONSTRUCTION.
3. SEE C SHEET FOR GRADING.
4. PREPARE SCENE BEFORE 4. FINAL CURB LINE. SCENE SHALL HAVE 25' MAX PASSAGE ZONE SHALL HAVE 25' MAX AND COORDINATE FINAL GRADIES WITH THE ENGINEER.
5. ELEVATION OF EXISTING SURFACE AT CONSTRUCTION SHALL BE APPROXIMATE. THE ENGINEER TO FINALIZE ELEVATION IN THE CONSTRUCTION AREA.
6. CONTRACTOR SHALL CONTACT HARBOR DEL INSTEAD OF 45' TRUNK AT (810) 11-1111 FOR BUS STOP POLE PLACEMENT TO CONVENTION POINT.
7. SEE C SHEET FOR FINISHES AND LIGHTING DETAILS.
8. SEE S SHEET FOR NEW FENCE/STAIN LIGHTING DETAILS.
9. SEE R SHEET FOR IRRIGATION PLAN AND DETAILS.
10. SEE P SHEET FOR PLANNING PLAN AND DETAILS.
11. SEE T SHEET FOR SIGNAL, CONVENTION, ELECTRICAL, DETAILS, AND CONVENTION DETAILS FOR ASBESTOS.

12. WORK TO EXISTING "SLASH PAD PARK" DETAIL.
13. CONSTRUCTION TO CONSTRUCT MEDIAN AND SIDEWALK STRIPING PLAN.
14. CONSTRUCTION TO CONSTRUCT UNDERGROUND PER CITY OF OAKLAND STRIPING DETAIL DRAWING D-13.
15. CONTRACTOR TO CONSTRUCT TYPE B DETAIL DRAWING D-4.
16. CONTRACTOR TO CONSTRUCT CONCRETE SIDEWALK PER CITY OF OAKLAND STRIPING DETAIL DRAWING S-2.
17. CONTRACTOR TO CONSTRUCT CURB RAMP DRAWINGS S-3 TO S-8.
18. CONTRACTOR SHALL SUBMIT SHOP DRAWING TO ENGINEER FOR APPROVAL.

