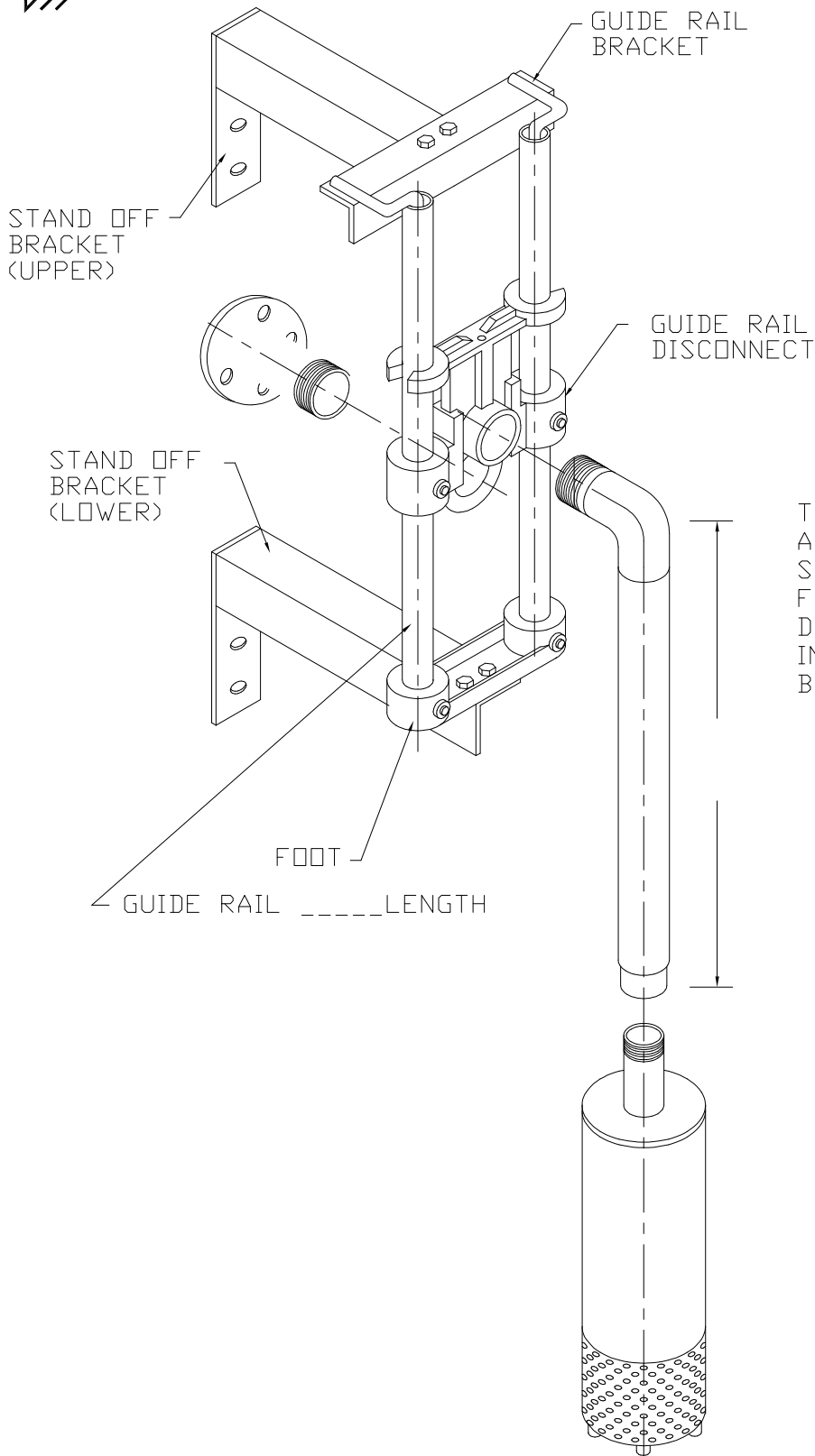




GUIDE RAIL DISCONNECT SYSTEM



TO INSTALL GUIDE RAILS START AT TOP OF SUMP PLACING UPPER STAND OFF BRACKET ABOUT 2" FROM TOP OF SUMP. THEN MEASURE DOWN LENGTH OF GUIDE RAIL AND INSTALL LOWER STAND OFF BRACKET.