

NORTHEAST FORENSIC TRAINING CENTER • FALL 2012

Northampton Community College, Fowler Family Southside Center, 511 East Third Street, Bethlehem, PA 18015



Basic Latent Print Processing for Patrol – 8 hours (1 hour lunch on your own)

Theory and practices in the “Basics” of Latent Print Processing that would be normally encountered by the Patrol Officer. Upon the completion of this course, the student will be able to relate the application of the “Basic” procedures and responsibilities of processing for Latent Prints. These topics include: Definitions and characteristics of fingerprints, Identify the best method to develop latent prints on different surfaces, basic equipment utilized by the Patrol Officer, processing basic surfaces with different fingerprint powders, the proper methods to document the developed latent prints, the collection and preservation of developed latent prints, and report documentation of the latent processing. The public will take notice to Officers processing minor offenses, which helps in building the public trust and support. This course can also aid Administrators in identifying Officers that take the initiative to follow through with investigations that are commonly missed. The increased amount of physical evidence developed, documented and collected will only increase the odds of more clearances of offenses.

Sessions:

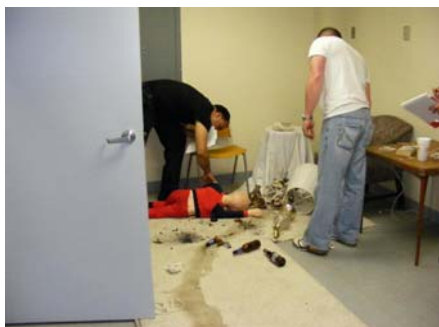
*Thurs., **8/23/2012**, 8:00am - 5:00pm

*Thurs., **11/29/2012**, 8:00am - 5:00pm

*Thurs., **9/6/2012**, 8:00am - 5:00pm

*Tues., **12/11/2012**, 8:00am - 5:00pm

*Thurs., **10/11/2012**, 8:00am - 5:00pm



Crime Scene Initial Response – “Expanded” - 8 hours (1 hour lunch on your own)

Theory and practices in the Initial Response to a Crime Scene is to include “real life experiences”. Upon the completion of this course, the student will be able to relate the application of procedures and responsibilities of assorted Units, Agencies, and Bureaus conducting the investigation. These topics include: The initial response to the scene; securing the scene; access control; communications; identify witnesses, briefing of arriving personnel; documentation. The students will have two short group practical Lab exercises and one group presentation. A written test will conclude the course and evaluate what they have learned. Students should expect some graphic images in the course presentation. **This course has been approved for eight (8) hours of continuing education by the Pennsylvania Coroners’ Education Board under the provisions of Act 22 of 1988.**

Sessions:

*Tues., **7/24/2012**, 8:00am - 5:00pm

*Tues., **10/30/2012**, 8:00am - 5:00pm

*Tues., **8/21/2012**, 8:00am - 5:00pm

*Tues., **11/27/2012**, 8:00am - 5:00pm

*Thurs., **9/4/2012**, 8:00am - 5:00pm



Electronic Sources of Information for use in Criminal Investigations - 16 hours **RESTRICTED**

This course is intended to provide students with an understanding of the sources of information available on the internet, and how to exploit those sources for use in Criminal/Private Investigations. In this course, we will discuss the brief history of the internet, and its use in law enforcement. This course will discuss the various sources of open source information and intelligence available from multiple public, commercial, and private sources. It will also demonstrate common internet tools and investigative software available to locate, identify, and capture evidence, which may be garnered from the internet. Finally, this course will discuss the legal limitations of internet investigations, and the applicable Federal laws. **(Previously approved for PA Coroner’s Education Con-Ed Credit – Recertification Pending)**

Sessions:

*Sessions are currently being scheduled. Please e-mail nftc@northampton.edu for dates.

NORTHEAST FORENSIC TRAINING CENTER • FALL 2012

Northampton Community College, Fowler Family Southside Center, 511 East Third Street, Bethlehem, PA 18015



Shooting and Bloodstain Pattern Documentation, Preservation and Collection - 16 hours (1 hour lunch on your own)

Most agencies tasked with investigating violent crime/death scenes do not have the resources readily available to have practitioners with the proper training and experiences to respond immediately to a crime scene. There are times that the totality of what has occurred is not known at the time the crime scene investigation is being conducted. You normally will not know what pieces of evidence will be critical to properly Document, Preserve and Collect while on scene and have examined later when the resources are available. It is more likely there will be a need to have the evidence you collected, along with the scene documentation, later examined for reconstruction and analysis purposes. Through this course the student will discuss and demonstrate the skills needed to perform these tasks for a more complete investigation. **This course has been approved for eight (8) hours of continuing education by the Pennsylvania Coroners' Education Board under the provisions of Act 22 of 1988.**

Sessions:

*Thurs. & Fri., 9/20-21/2012, 8:00am - 5:00pm

*Mon. & Tues., 10/15-16/2012, 8:00am - 5:00pm

*Thurs., & Fri., 12/13-14/2012, 8:00am - 5:00pm



"Basic" Medicolegal Death Investigation - 8 hours **RESTRICTED** (1 hour lunch on your own)

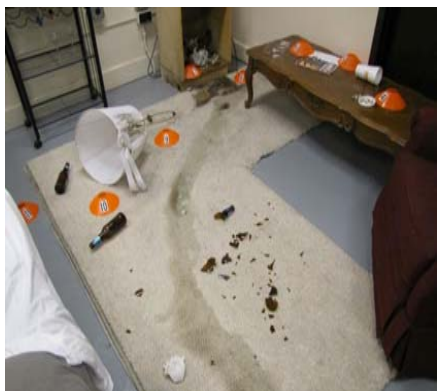
This course was developed for the 1st Responder, who upon arriving on a scene determines that a death has occurred. The 1st Responder is a Law Enforcement Officer, Paramedic/EMT, Fire Investigators and Insurance Personnel. Second year NCC Criminal Justice Administration major students will be permitted to attend this training. This basic forensic program will discuss State Statutes and what constitutes a death investigation in Pennsylvania, determining time of death and explanations on Causes and Manners of Death. This course will discuss the importance of Forensic Autopsies and the preservation of evidence in a death investigation. **This course has been approved for eight (8) hours of continuing education by the Pennsylvania Coroners' Education Board under the provisions of Act 22 of 1988.**

Sessions:

*Thurs., 9/27/2012, 8:00am - 5:00pm

*Thurs., 10/18/2012, 8:00am - 5:00pm

*Thurs., 12/20/2012, 8:00am - 5:00pm



"Basic" Crime Scene Photography for the 1st Responder – 8 hours (1 hour lunch on your own)

Digital Photography has become an extremely important part of criminal investigations. Under or over exposed images are useless in bring an investigation to a successful resolution. This course will focus on the theories and practices in the "Basic Principles" of Digital Photography as it relates to Law Enforcement, Medicolegal Death Investigators, and Fire Investigators. Following the National Academy of Sciences report, increased attention into fundamental forensics has been made by Defense Attorney's. Upon the completion of this course, the student will have an understanding of the Digital File Management Procedures, the proper methods of documenting a crime scene, the accepted procedures for the 1st Responder Photography, review the different camera settings, and understand image documentation in "low light" environments typically encountered. Students will have several short practical exercises and a Crime Scene Photography Exercise. Students should expect some graphic images in the course presentation. In every past course, veteran officers have been surprised at how easy it can be to obtain usable images in low light environments. **This course has been approved for eight (8) hours of continuing education by the Pennsylvania Coroners' Education Board under the provisions of Act 22 of 1988.**

Sessions:

*Thurs., 8/28/2012, 2:00 - 11:00pm

*Weds., 9/19/2012, 2:00 - 11:00pm

*Thurs., 10/4/2012, 2:00 - 11:00pm

*Tues., 11/20/2012, 2:00 - 11:00pm

*Tues., 12/4/2012, 2:00 - 11:00pm

NORTHEAST FORENSIC TRAINING CENTER • FALL 2012

Northampton Community College, Fowler Family Southside Center, 511 East Third Street, Bethlehem, PA 18015

CLASS SIZE

Is limited to **20 students** for all classes except Shooting and Bloodstain Pattern Documentation, Preservation and Collection, which is limited to **15 students**.

CLASS SUGGESTIONS

Bring a camera, flashlight and dress appropriately – you will most likely get a little dirty.

CLASS LOCATION

Most classes are held at NCC-Fowler Family Southside Center, 511 East Third St., Bethlehem, Pennsylvania, 18015. Classes can be delivered on-site for your agency. To find out more, please e-mail nftc@northampton.edu or call (610) 332-6426.

INSTRUCTORS

Each course has been designed and is delivered by experienced practitioners in the field.

TUITION

1 Day Course: \$75.00 per student. **2 Day Course:** \$150.00 per student. Tuition is free for **Northampton County** Affiliate organizations.

REGISTRATION PROCEDURES

Northampton County Affiliate Subscription Members

- Agencies already registered as an affiliate (have username and password)
 - Go to northampton.edu/lifelearn and click on the “Affiliate” tab
 - Reserve seats for yourself or your organization’s members
- Agencies who need to register as an affiliate
 - The organization contact person must complete the affiliate process
 - To begin the affiliate process, go to northampton.edu/lifelearn and click on the “affiliates” tab
 - You will be contacted when your account has been opened and you can begin registering for courses

Out of County Participants

- Go to northampton.edu/lifelearn
- Click on “View Catalog” under the Center for Business and Industry
- Click on Northeast Forensic Training Center to view classes and register
- Payment is due at the time of registration via credit card

Response organizations in Northampton County are eligible to participate in the Emergency Services Affiliate Subscription Program at no cost. This service is made possible through a grant from Northampton County Emergency Management Services. If you did not sign up as an affiliate organization yet or if you have any questions or would like to obtain Affiliate Subscription Membership information, please contact Heather Ehritz at (610) 332-6596.

RESTRICTED CLASSES

Due to the sensitive subject nature and content, students must be working in the field of Law Enforcement, Fire Marshall, School Administration, Corporate Security Administrators, and/or Medicolegal Death Investigation to attend these courses. Prescreening is required for attendance for Non-Subscription Members. Contact Andy Kehm for your pre screening and registration at (610) 332-6426. All other questions contact Heather Ehritz at (610) 332-6596. Subscription holders may register on-line.