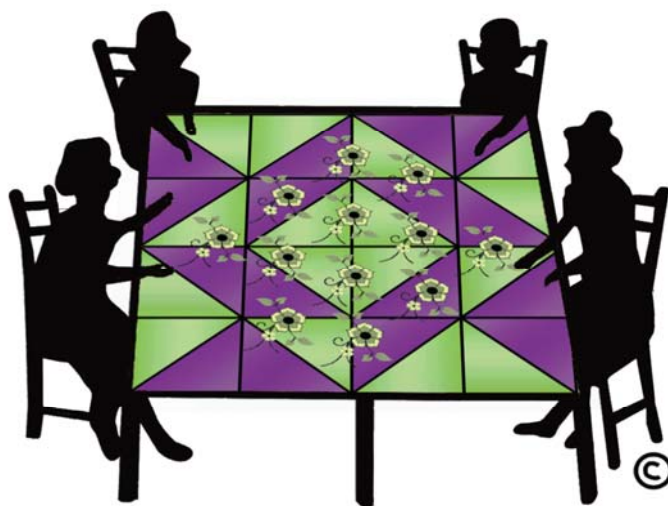


# *A Quilters' Sampler™*

May 10 & 11, 2012

COURTYARD by MARRIOTT – NASHUA, NEW HAMPSHIRE



*featuring instructors*

Beth Helfter  
Kristi Parker  
Linda Pearl

Diane Loomis  
Karen Pessia  
Kathy Anderson

Judy Damon  
Kristine Poor  
Terri Sontra

Linda J. Hahn  
Cary Flanagan

## ***Free Class Registration to Members!***

Revival of the Sampler Series of Quilt Classes & Events  
Daily Lunch and Lectures  
Dinner Party with Show and Tell  
Tickets to Area Guild Quilt Shows & Museums

"Just to Shop" there is a Vendors ***May Market*** open  
Thursday 10:00 AM to 8:00 PM & Friday 10:00 AM to 5:00 PM

***May Market*** open FREE to everyone!

No registration required "Just to Shop"!

***Presented by: Eastcoast Quilters Alliance 3, LLC***

***www.aquiltersgathering.com***

## **INFORMATION ON FEES – REGISTRATION – ADMISSION**

**REGISTRATION FORMS ARE PROCESSED AS RECEIVED. CLASSES ARE FILLED ON A FIRST COME, FIRST SERVED BASIS.** Early registration is urged to assure enrollment in class of your choice. No telephone registrations can be accepted. Registrations must be received by May 1, 2012 to assure processing before event. Registrations received after this date will be held at the Registration Desk. Please submit one registration form per person. Form may be duplicated for friends.

**BE SURE TO INCLUDE A \$44, THE GOVERNMENT RECOGNIZED AMOUNT FOR STANDARD POSTAGE. SELF ADDRESSED STAMPED ENVELOPE WITH REGISTRATION FOR YOUR CONFIRMATION AND SUPPLY LISTS. PLEASE NOTE: SEND REGISTRATION FORM TO: SARAH GLENFIELD, EQA3-SAMPLER, 58A HARVEY ROAD, LONDONDERRY, NH 03053**

**CONFERENCE PARTICIPANTS MUST CHECK IN AT REGISTRATION DESK UPON ARRIVAL-DESK OPEN:**  
Thursday & Friday, May 10 & 11, 2012 – 8:00 AM to 5:00 PM.

**REGISTRATION FEE (For Non-Members Only) - \$12.00 - MUST BE INCLUDED WITH REGISTRATION FORM.** The Registration Fee for Non-Members provides one year of Membership with Eastcoast Quilters Alliance 3, LLC and all the benefits that membership entails. Fees can be paid by Check or Credit Card. A \$35.00 fee will be added for bounced checks.

**CLASS and EVENT FEES:** SAMPLER FEES: Half-Day Sampler Classes \$35.00, Lunch/Lecture \$20.00, Dinner Party with Show & Tell \$35.00. There is no Registration Fee for current EQA3 Members. Registration for Non-Members is \$12.00. Registration for all includes an admission ticket to one of the fabulous local guild quilt shows or Museums. Non-member registration also includes a one-year membership to EQA3 with all benefits.

***May Market:*** IS OPEN TO THE PUBLIC AS FOLLOWS: THURSDAY 10:00 to 8:00 and FRIDAY 10:00 to 5:00

**PAYMENTS and REFUNDS - *We are now accepting PayPal, Visa, Master Card and online registrations are available.*** Personal checks or Money Orders covering all fees must be included with registration. Make payable to: Eastcoast Quilters Alliance 3, LLC. Figure all costs on first choices. If placed in an alternate choice, any necessary adjustments will be made. You may add classes, events, etc. at any time by sending a duplicate registration form and any additional fees. **No Additional Registration Fee Is Required.** Write "Addition" and your Registration Number on this form.

\$12.00 REGISTRATION FEE (FOR NON-MEMBERS) IS NON-REFUNDABLE. ALL OTHER FEES WILL ONLY BE REFUNDED WHEN, AND IF, SPACE IS FILLED. **HOWEVER, NO REFUNDS OF ANY FEES OR COSTS WILL BE MADE FOR ANY CANCELLATIONS AFTER APRIL 1st.** BY REGISTERING YOU AGREE WITH THE GUIDELINES IN THIS POLICY.

**TRANSPORTATION** – The Courtyard by Marriott, Nashua is at Exit 8 off Rte 3 and easily reached by all major highways. Shuttle services operate regularly out of Boston's Logan Airport and the Manchester-Boston Regional Airport in New Hampshire. Your travel agent can assist with flight information and/or car routes. You may also check our website for additional driving instructions.

**HOUSING** – All programs of A *Quilters' Sampler*<sup>TM</sup> will be held Thursday, May 10 and Friday, May 11 at the Courtyard by Marriott in Nashua, New Hampshire. **Run Away! STAY OVERNIGHT AND ENJOY ALL THE SAMPLER HAS TO OFFER** The Courtyard by Marriott, 2200 Southwood Drive, Nashua, N.H. has reserved a block of rooms for A *Quilters' Sampler*<sup>TM</sup> at a special rate: Single/Double/Triple or Quadruple at \$89+ tax. To Make Reservations, please indicate that you are with Eastcoast Quilters Alliance 3, LLC or A *Quilters' Sampler*<sup>TM</sup> in Nashua, NH, May 10 & 11, 2012 by calling 1-603-880-9100. In the event you have problems making reservation through this number please contact Sarah Glenfield for help. It is recommended to make reservations early. **QUESTIONS?** Email: Sarah Glenfield at [sarah@aquiltersgathering.com](mailto:sarah@aquiltersgathering.com) or Kate Sussman at [kate@aquiltersgathering.com](mailto:kate@aquiltersgathering.com) 603.714.8871

## **SCHEDULE OF EVENTS**

Thursday & Friday, May 10 & 11 – Sampler Series of Classes Times are:  
9:00 AM to 12:00 PM, 2:00 PM to 5:00 PM & 6:00 PM to 9:00 PM

***May Market:*** Thursday 10:00 AM to 8:00 PM & Friday 10:00 AM to 5:00 PM

Thursday, May 10 – Lunch & Lecture 12:00 PM to 1:30 PM

Friday, May 11 – Lunch & Lecture 12:00 PM to 1:30 PM

Friday Dinner Party with *Linda J. Hahn presenting "DON'T QUIT YOUR DAY JOB...Yet!"*  
plus show and tell afterwards 6:30 PM

# Welcome to A Quilters' Sampler™!

It gives us great pleasure to invite you to *A Quilters' Sampler™*. All workshops, lectures, and special events have been planned just for you. We have brought together a wonderful group of quilt makers to teach both the basics and the latest in quilting methods and techniques. Our Special Events are a terrific mixture of pleasure and purpose. *A Quilters' Gathering™* was founded in 1989 by Jeanne Glenfield & Marie Geary to provide you the opportunity of learning in an atmosphere of warmth and friendship with all the comforts of a warm quilt.

## Two Full Days of Quilting Activity

*A Quilters' Sampler™* different events custom made for quilters that fill two fabulous days with so much to do! Create your own schedule by coming for a half day, a full day, or for an overnight *Run Away!* You can fill your time with all the classes or with a combination of classes, Lunch, *May Market* and local exhibits. The choice is yours! All Sampler participants receive a free ticket for admission to one of our fabulous local Guild Shows or Museums. Vendors *May Market* is open free of charge to everyone. Registration not required to shop at the Vendors *May Market*.

## About Our Featured Instructors

**NEW ENGLAND QUILT DESIGNERS COOPERATIVE (NEQDC)** currently has six members from New Hampshire, Massachusetts and Rhode Island. Each of us is a professional quilt designer and most of us teach quilting as well. We hope you will enjoy getting to know us and learning about the work that each of us does. Teaching for us are: *Beth Helfter, EvaPaige Quilt Designs, Cary Flanagan, Something Sew Fine Quilt Design, Judy Damon, Judabelle Quilts, Kristi Parker, Chicken Soup Designs, Terri Sontra, Purple Moose Designs.*

*Diane Loomis, Sudbury, MA* - Diane first discovered her love of quilting volunteering for a school project for her daughter's class. She turned to machine quilting to finish her quilts, and was hooked! Inspired by classes from many talented quilters, Diane developed a passion for machine quilting her quilts of all sizes - all on her home sewing machine. Now she sees quilting designs everywhere and loves to create 'art under the needle' with her machine quilting. Diane's quilts have received over 15 awards in national and regional quilt shows since she began exhibiting her work in 2006. In 2011, her quilts won the Brother Award for Wall Machine Workmanship at the Paducah AQS show, 2<sup>nd</sup> place in both the Miniature and Small Pieced Quilt categories at the National Quilters Association show, and 3<sup>rd</sup> place in the Miniature category at the Houston International Quilt Show. With over 20 years of teaching experience, Diane loves to share her passion for machine quilting in her workshops and lectures. Find out more about Diane by visiting her website [www.dianeloomisquilts.com](http://www.dianeloomisquilts.com) and her blog at [www.dianeloomisquilts.wordpress.com](http://www.dianeloomisquilts.wordpress.com).



*Karen Pessia, Medford, MA* - I have been creating with a needle and thread since childhood and have been a Quiltmaker for more than 25 years. I found my true love, appliqué 7 years ago and it has been a wonderful creative journey ever since. I have been teaching since March of 2006. I've been publicized in *The Quilter Magazine* and *Beloved Baltimore Album Quilts* by Elly Sienkiewicz. I created class samples for *Elly Sienkiewicz. Quilt Awards Include: My Baltimore Journey* - Jeanne E. Glenfield Award, November 2008, *A Quilter's Gathering, Nashua NH & Honorable Mention-Large Quilt Category, August 2009, Images, Lowell MA. Special Exhibits Include; Baltimore Daughters Review II, Houston International Quilt Festival, November 2010. May Tulips* (Jointly with Diane Loomis, Sudbury MA) - Third Place Machine Quilting Category, November 2009, *A Quilter's Gathering, Nashua NH, Honorable Mention Machine Quilting Category, August 2010, Images, Lowell MA, Judges Choice, August 2010, Images, Lowell MA.*

*Kathy Anderson, Swansea, MA* - Kathy sewed her first skirt, complete with a waistband and gathers, at the age of nine--for her Barbie doll. At one point she made many of her own clothes, then she made her first quilt 24 years ago for her first niece and she hasn't gone back to garments since. (Except for the prerequisite lounge pants and boxers for her two boys who have been attending the Gathering since before they were born.) Kathy has been teaching quilting since 2004 - She specializes in beginning quilting and in troubleshooting quilt and sewing problems. Her students sometimes bring her an item or idea and ask her help in making a pattern. Kathy lives with her husband and two sons in Swansea, MA.

*Linda J. Hahn, Manalapan - NJ* - Linda is the author of the AQS Best Seller "NEW YORK BEAUTY SIMPLIFIED". Linda is currently working on her new book for the AQS with an expected release date of Spring 2013. Linda is a NQA Certified Teacher and was the 2009 NQA Certified Teacher of the Year. She has been three times nominated (2001, 2004 and 2008) for Professional Quilter Magazine's Teacher of the Year Award. Linda designs quilt patterns which are marketed under the name FROG HOLLOW DESIGNS. In addition to teaching, writing and designing, she is also a long arm quilter. When not doing something "quilty", she likes to cruise the caribbean, or sit under a palm tree with her Kindle and an umbrella drink. Her favorite authors are Jackie Collins, Tom Clancy and Janet Evanovich.

*Kristine Poor, Derry, NH* - Owner of Poorhouse Quilt Designs - hence the name! I started Poorhouse Quilt Designs in September 2006, after designing the Sampler Tote as a gift for a family member. The tote was a hit and a pattern company was born! I have a degree in Engineering and a love of fabric; these seemingly conflicting pursuits have come together. I work with Jean Johnson (my mom/pattern editor/sample maker/creative assistant) to develop patterns that are a canvas for your creativity.

**Linda Pearl, Nashua, NH** - Linda has been a Quiltmaker for the better part of 20 years, working in traditional patterns and designs for most of that time. Beginning in 2006, several life events occurred which had a profound effect on her quilting style. At the request of a friend who was starting a pattern design company, she agreed to test a pattern for a baby quilt. Linda later went on to test a second pattern, finding freedom in the contemporary forms that this designer embraced. The more that she worked with more contemporary color palettes and designs, the more comfortable she became with their use. In 2007, Linda received an email through that same friend, forwarding a request for help from Cotton Spice Quilting Magazine. The magazine, which markets itself as the magazine for quilters who are looking for something different, became successful enough to need to expand its staff. Linda became the Block of the Month Challenge Director for Cotton Spice in February, a position she still holds. As the year continued, other opportunities presented themselves, and prompted Linda to open The Patchwork Pearl in the fall. Linda's work has been exhibited in several guild shows throughout New Hampshire. In October of that year, she received notification that her quilt, Margarita Madness, had been juried into A Quilter's Gathering in Nashua, NH. Linda and husband Mike continue to live in the home that they raised their family in.

## **SAMPLER SERIES OF CLASSES**

Instruction in various quilting techniques are given by highly qualified teachers at three intervals throughout the day. Instruction is presented by hands-on participation and demonstration technique with examples of work in all stages. Each class offers three hours of instruction and is designated to introduce you to a new quilt making techniques in a short period of time and without having to buy or bring numerous supplies. Many teachers will have kits available at nominal cost. Classes will be kept small and all students must be pre-assigned in a class. All classes are suitable for the beginner, intermediate, and advanced student.

### **THURSDAY – MAY 10<sup>th</sup>, 2012 – Classes PRESENTED AT 9:00 AM, 2:00 PM & 6:00 PM**

#### **9:00 AM – 12:00 Noon**

**BH2 – INTRO TO EMBELLISHMENTS (Machine Quilting/Embroidery) – Beth Helfter, Pepperell, MA** - Love seeing fun sparkles and shine on quilts but unsure of where to begin to add embellishment to your own quilts? This is the class for you! Experiment with decorative stitches, ribbon techniques, iron-on threads, jewels, "found" items, and more. Supply List: 2-3 unfinished blocks to use as backgrounds for your experimentation. A good size is 12 ½" square or so to give plenty of room to work., Sewing machine with extra needles, 4-5 brightly colored threads, **Supply List:** Basic sewing supplies, Iron and ironing surface. **Kit fee: \$10.00.**

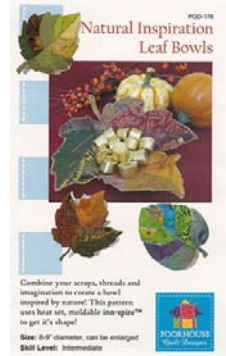
**DL1 - MACHINE TRAPUNTO (Machine Quilting) - Diane Loomis, Sudbury, MA** - Learn how easy it is to incorporate dramatic dimensional effects into your quilts– by creating elegant trapunto quilting designs using your home sewing machine. This machine technique takes the work of out the 'stuffed work' traditionally associated with Trapunto method. Diane will introduce you to free motion quilting techniques that will take your quilting to the next level while making a small trapunto sampler. Learn the most effective ways to incorporate straight line and grid backgrounds, traditional echo outlining, and free motion stippling into your quilting to make trapunto designs really stand out on your quilt. Come have fun and expand your machine quilting horizons! Level: Confident beginner and above; free motion quilting experience helpful. **Sewing Machine Required. Kit Fee \$15**



**JD2 – CRAZY QUILTING BY MACHINE (Piecing/Finishing) – Judy Damon, Milford – NH** - Crazy quilting isn't just for little old ladies! Let's bring the techniques that the Victorians loved a hundred years ago up-to-date, using modern tools and materials. Create beautiful projects that express your personality in a colorful and liberating way. You will get a historical perspective by looking at authentic antique examples of the crazy quilters handiwork, as well as modern adaptations in quilts, bags and accessories. Then you will learn an easy, spontaneous way to build a one-of-a-kind CQ block on a muslin foundation, with no pattern required! We'll discuss fabric selection and developing a color palette or theme for your project. Finally we'll look at ways of embellishing your block, both by hand and machine, using fibers, ribbon, beads, buttons, and your machine's decorative stitches. This is a great class for scrap-savers, embellishment junkies, and anyone who ever wondered what to do with the 99 fancy stitches on her machine! **Tools:** Sewing machine in good working order, with ¼" foot, Fabric scissors – good and sharp, medium size, Neutral cotton thread, Thread snips, A few pins, Small ruler (1x6 or 1x12), Finger-pressing tool (optional, but very helpful!), Fabric markers for light and dark colors (chaco-liners, blue water-soluble markers, Clover white marker, etc.), Pencil and paper for note-taking. **Materials:** Muslin – two 14" squares, Medium weight cut-away stabilizer – one 14" square, Cotton batting – one 14" square, Assorted fabric scraps – include cotton, satin, velvet, any other "fancy" fabric you like. A variety of textures and types makes your block more interesting. The pieces do not need to be large, or even straight. Wonky bits are fine! If you plan to do machine embellishing: Assorted decorative threads (rayon, metallic, variegated, twists, etc.), for embroidering seam lines – many colors and types, Zigzag or open-toe foot (required), couching foot (optional), If you plan to do hand embellishing: Hand sewing needles, Thimble, Nylon beading thread (Nymo, Silamide, etc.), Assorted beads, buttons, ribbon, fibers, trims, embellishments. **Optional Kit (\$10) Supply List:** Muslin, stabilizer, & batting, Assorted fabrics and embellishments.



**KA1 – SUMMER SWEET HEART (Hand Appliqué) – Karen Pessia, Medford, MA** - This is an 8” finished hand appliqué block that starts with a sweet heart shaped wreath, embellished with simple to make 3-dimensional bellflowers and a ruffled flower at the base of the wreath. The flowers are made from just rectangles of fabric! Karen will show you how to make bias stems to any size you need and make perfect points on your leaves. *Kits will be provided for \$5.00.*



**KR1 – NATURAL INSPIRATIONS LEAF BOWL (Machine Piecing/Quilting) – Kristine Poor, Derry, NH** - This workshop is intended for the quilter who’d like to explore a “free-form” project and use those scraps! We will be using inn-spire™, a new heat-set moldable stiffener by Innovative Craft Products. Inn-spire™ can be used on a variety of projects and this class will teach you the “basics”! We will finish our project with thread painting and couching and you will go home with a finished project! Skill Level: Confident Beginner to Expert. *Sewing Machine Required.*

**LH1 – NO MARK CELTIC KNOTS (Machine Appliqué) – Linda J. Hahn, Manalapan – NJ** - Create Celtic knots without the necessity of marking. The knots can be used not only on quilts, but also on a variety of craft items, such as totes, greeting cards, wearables and more. Kit fee \$15.00 payable to instructor contains one spool of Clover Quick Bias, one Teflon Pressing Sheet and two Celtic Knot patterns. **Supply List:** Approximately 10 long straight pins (such as flower head), two 8” square sheets of freezer paper or parchment paper on which you will place your knots for the trip home, small scissors. If you have a small 8”x8” (or close to that) individual pressing surface (that you can pin into), please bring it. If you do not have one, there will be some to share. *Kit fee \$15.00 (Kit retails for \$30).*



### **2:00 PM – 5:00 PM**

**CF1 – CUT, SHUFFLE & GO (Piecing) – Cary Flanagan, Candia, NH** - This will be a hands on technique class. Some sewing will be involved with small samples to take home, but there will be no finished project. We will also cut up colored paper into a variety of designs to experience some of the many ways blocks and small projects, such as placemats, can be “cut & shuffled” and sewn together as a very quick and fun way to finish any size quilting project in much less time than the more traditional ways of cutting out and piecing blocks. We will also learn how to choose appropriate fabrics for a variety of quilting design. *Sewing Machine Required. Kit Fee: \$5.00*

**DL2 - CELTIC SPIRALS, CIRCLES, AND SWIRLS (Machine Quilting) - Diane Loomis, Sudbury, MA** - The spiral is a classic motif found in decorative art forms through the ages and across cultures, and is a great addition to both traditional and contemporary quilting designs. Learn how to draw and stitch the basic spiral shape, create spiral variations, and integrate this motif into your quilting style. After mastering the circular spiral shape, we will move on to explore bubble, swirls, circles, and other quilting designs based on the same circular shape. Level: Advanced beginner and above, free motion quilting experience required. *Sewing Machine Required. Kit Fee \$12*

**KN1 – SASHIKO EMBROIDERED, HAND APPLIQUED PINCUSHION (Hand Work) – Kathy Anderson, Swansea, MA** - Hand piecing is portable! Construct a drunkard’s path block pincushion and embellish it with sashiko stitching by hand and find out how easy curves are when you do them by hand. We will complete our project in this three hour class. These are great for gifts! *Optional Kit Fee \$10.00.*

**KR2 – TEA LEAF TABLETOP (Machine Piecing / Finishing) – Kristine Poor, Derry, NH** - This workshop is for the quilter who (like me) loves the Cathedral Window block, but would like a way to do it by machine! We will make the Tea Leaf blocks and continue on to make a lovely table square! We will discuss color options and then explore quilting methods. Color options will be shown to inspire future fabric purchases! Pre class cutting is required and will be provided by the instructor. Skill Level: Confident Beginner to Expert. *Sewing Machine Required.*



**LH2 – NEW YORK BEAUTY SIMPLIFIED (Piecing/Finishing) – Linda J. Hahn, Manalapan – NJ** - In this workshop, you’ll learn Linda’s ONE PIN technique for making perfect New York Beauty blocks. **Kit fee \$15.00** payable to instructor contains custom made acrylic templates and preprinted Electric Quilt Foundation paper. **Supply List:** Scissors, your machine with 1/4” foot, neutral thread on top and in bobbin, 8 1/2” or 9 1/2” square ruler with a bias line. Fabric: Black/Very Dark (can be solid or with a small scale tone on tone pattern) 1 1/2 yards (inc. binding), Pink 1/4 yard, Dark Pink 1/3 yard, Purple 1/8 yard, Medium Green 3/8 yard, Fabric pre-cut as follows: Pie Shape (8) 4 1/2” squares, Background (8) 8” squares, Spires (40) 2 1/2” x 3 1/2” rectangles (this are the skinnier points), Background Spires (48) 3” x 4” rectangles (these are the larger parts of the “crown”) Center Star (3) 6 1/2” squares, Highlight Square (10) 6 1/2” squares, Center Star Points (40) 6 1/2” squares, This quilt looks great in batiks or small scale Asian blender prints. *Kit fee \$15.00.*

## **DON'T MISS THE WONDERFUL *May Market***

**OPEN FREE OF CHARGE THURSDAY 10 to 8 AND FRIDAY 10 to 5**

**TS1 – A LITTLE SOMETHING EXTRA (Machine Piecing / Finishing) – Terri Sontra, Mirror Lake, NH** – Some Quilts just beg for a little extra sparkle to make them shine. Learn how to add beads, charms and other doo-dads to any quilt. What special tools do you need? What kind of beads are good? When do you add them? Can they be washed? Will they fall off? We'll explain everything! Skill level: Beginner & Above. **Kit fee of \$15.00** includes needles, thread, mat, and beads for you to practice with and extras to take home.

### **6:00 PM – 9:00 PM**

**KN2 – WOOL APPLIQUE AND EMBROIDERY (Hand Work) – Kathy Anderson, Swansea, MA** - Learn the fun you can have with wool--no seam allowances to turn under--while making a coaster or ornament. We will complete our project and may have time to start a second one. These are great for gifts! **Supply List:** Basic Sewing Supplies, Thread snips or small sharp scissors, Needle threader, Thimble, All the items below can be purchased as a **kit from the teacher for \$10** or you can bring your own items below in addition to the Basic Sewing Supplies, Wool, Scraps for a flower--2 colors, Background color--6" square, Black (or match background)--6" square, Floss--colors to match your wool, Embroidery needles, any size, Freezer paper--2 sheets at least 10" X 12". **Optional Kit Fee \$10.00.**

**KP1 – APPLIQUE UNVEILED.....A Tulle Appliqué Method (Machine Appliqué) – Kristi Parker, Amherst, NH** - This quick and easy method of appliqué can be done entirely by machine, but the results have the look of hand appliqué. Very fine bridal tulle is used as an underlay for the appliqué motifs, but it is not visible in the finished project. Students will construct appliqué motifs from patterns provided by the teacher to create a block that can be finished to make a pillow or used as the beginning of a larger quilt. **Supply List: Sewing Machine Required.** 18x18" background fabric, A variety of scraps and fat quarters for appliqué motifs, Thread to match fabric colors, Clear thread [such as YLI Wonder Thread] (optional), ¼ yard fine bridal tulle (white for light backgrounds and dark for dark backgrounds)\*, Freezer paper\*, Scissors, Pinking shears (optional), Pins, A hand sewing needle, A pencil, A chopstick (optional), A stapler (optional), Lightweight cardboard (an empty cereal box or shirt box), A glue stick, Sewing machine with zig-zag capability, An open-toe or zig-zag foot for sewing machine, Extension cord (optional), Portable light (optional), \*limited supplies available from the teacher.

**LP1 – THE ONLINE QUILTER TODAY (Multi-Media Class) – Linda Pearl, Nashua, NH** – This class offers a snapshot view of what's available electronically to quilters. There's a lot out there that's online and free – which has dramatically changed how quilt shops can deliver product. The class includes Social media (Facebook), but also resources such as You Tube, Online radio (Pat Sloan and/or Mark Lipinski to name a few), About.com, and Quilt Guilds. It'll also cover in great detail the online resources available for Eastcoast Quilters Alliance 3, LLC, on-line registration for the **A Quilters' Gathering** will also be highlighted. Please submit any questions you may have ahead of time in advance to [linda@thepatchworkpearl.com](mailto:linda@thepatchworkpearl.com). There will be handouts provided to guide you through the keystrokes. There will be time at the end for questions and answers. **(PC or Tablet Not Required).**

### **LUNCH & LECTURE – THURSDAY, MAY 10<sup>th</sup>, 12:00 PM**

**BH1 – PLAYS WELL WITH OTHERS (Lecture) – Beth Helfter, Pepperell, MA** - From the days of quilting bees on the prairie to crowded monthly guild meetings, quilting has always been a social hobby. This lively lecture focuses on group quilt making in today's world, taking us beyond guild Block of the Months to swaps, round robins, and specialized group projects to show how adding more quilters with more ideas into your projects will expand your creativity and yield fantastic results. *Quilts and Power Point slides included in this brand new lecture!*



### **FRIDAY – MAY 11<sup>th</sup>, 2012 – Classes PRESENTED AT 9:00 AM, 2:00 PM & 6:00 PM**

#### **9:00 AM – 12:00 Noon**

**BH2 – INTRO TO EMBELLISHMENTS (Machine Quilting/Embroidery) – Beth Helfter, Pepperell, MA** - Love seeing fun sparkles and shine on quilts but unsure of where to begin to add embellishment to your own quilts? This is the class for you! Experiment with decorative stitches, ribbon techniques, iron-on threads, jewels, "found" items, and more. **Sewing Machine Required. Kit fee: \$10.00.**

**DL3 - ELEGANT QUILTED BACKGROUNDS: CLASSIC DESIGNS FOR YOUR QUILT (Machine Quilting) - Diane Loomis, Sudbury, MA** - The background designs of many classic and antique quilts are based on simple yet elegant grid quilting. Learn how to safely mark evenly spaced straight lines on your quilt and then practice the easiest way to stitch these designs. Straight and curved grids, spirals, rays, and thread choices will be covered in this free motion quilting class. Level: Confident beginner and above; free motion quilting experience helpful. **Sewing Machine Required. Kit Fee \$12**



**JD3 – IN-SPINITY WALLHANGING: SPOTLIGHT ON SCRAPS (Piecing/Finishing) – Judy Damon, Milford – NH** - Dig out your scrap basket now, because this quilt shows off those precious leftovers of your favorite fabrics in their very best light. Interlocking stars look complicated, but are really easy to put together. As we sew, we'll discuss color stories for scrap quilts by looking at examples of some of Judy's favorite scrappy creations. Learn how to edit your scrap selections to deliver a pleasing combination of colors and patterns, to take advantage of the power of value (light/medium/dark), and to choose effective background and accent fabrics. Each student is required to purchase the pattern (\$8); includes directions for large wall hanging and twin size. Pre-Cutting Work Prior To Class Required. **Sewing Machine Required. Supply List will be sent with Confirmation.**



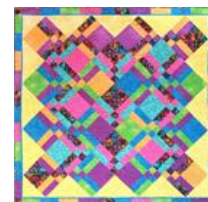
**KN3 – ARTISTIC QUILT LABELS (Hand Work) – Kathy Anderson, Swansea, MA** - All quilts deserve a label telling future generations “who made this”. Yours can be artistic and interesting to look at as well as informative. Find out how by joining us for this three hour hands-on class. *Optional Kit Fee \$5.00.*

**LH3 – MARGARITA MADNESS (Machine Quilting) – Linda J. Hahn, Manalapan – NJ** - Machine quilting class without a machine! Are your threads breaking?? Is your batting puckering? Do your borders come out wonky? This class covers a multitude of topics that will help make your machine quilting go much smoother. In the second half of the class, students will draw along with Linda as she demonstrates how to use simple shapes (“c”, “e”, “l” and “v”) to kick your quilting up! We will also cover landscape elements, feathers, border and sashing treatments. Handout fee \$7.00 payable to instructor contains a 10+ page handout with most of your class notes already printed for you, page protector, dry erase marker and wiper. **Supply List:** A pencil with a good eraser, note taking materials (paper, pen, etc).

**TS1 – A LITTLE SOMETHING EXTRA (Machine Piecing / Finishing) – Terri Sontra, Mirror Lake, NH** – Some Quilts just beg for a little extra sparkle to make them shine. Learn how to add beads, charms and other doo-dads to any quilt. What special tools do you need? What kind of beads are good? When do you add them? Can they be washed? Will they fall off? We’ll explain everything! Skill Level: Beginner & Above. **Kit fee of \$15.00** includes needles, thread, mat, and beads for you to practice with and extras to take home.

### **2:00 PM – 5:00 PM**

**CF1 – CUT, SHUFFLE & GO (Piecing) – Cary Flanagan, Candia, NH** - This will be a hands on technique class. Some sewing will be involved with small samples to take home, but there will be no finished project. We will also cut up colored paper into a variety of designs to experience some of the many ways blocks and small projects, such as placemats, can be “cut & shuffled” and sewn together as a very quick and fun way to finish any size quilting project in much less time than the more traditional ways of cutting out and piecing blocks. We will also learn how to choose appropriate fabrics for a variety of quilting design. **Sewing Machine Required. Kit Fee: \$5.00**



**DL4 – FABULOUS FREE MOTION FILLS: BANANAS, SPIRALS, SWIRLS, AND MORE! – Diane Loomis, Sudbury, MA** - Learn to create free motion background fills that you can sew without pre-marking your quilt. You will practice stitching many different fill designs and invent your own! Discover the ingredients of a great background that will show off your quilting motifs. Experiment with different thread colors to enrich the texture and dimension of your designs. Level: Confident beginner and above; free motion quilting experience helpful. **Sewing Machine Required. Kit Fee \$12**



**KA1 – SUMMER SWEET HEART (Hand Appliqué) – Karen Pessia, Medford, MA** - This is an 8” finished hand appliquéd block that starts with a sweet heart shaped wreath, embellished with simple to make 3-dimensional bellflowers and a ruffled flower at the base of the wreath. The flowers are made from just rectangles of fabric! Karen will show you how to make bias stems to any size you need and make perfect points on your leaves. **Kits will be provided for \$5.00.**

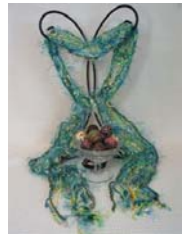
**KR2 – TEA LEAF TABLETOP (Machine Piecing / Finishing) – Kristine Poor, Derry, NH** - This workshop is for the quilter who (like me) loves the Cathedral Window block, but would like a way to do it by machine! We will make the Tea Leaf blocks and continue on to make a lovely table square! We will discuss color options and then explore quilting methods. Color options will be shown to inspire future fabric purchases! Pre class cutting is required and will be provided by the instructor. Skill Level: Confident Beginner to Expert. **Sewing Machine Required.**



**LH5 – JUNK TO JEMS (Piecing/Finishing) – Linda J. Hahn, Manalapan – NJ** - You’ll be well on your way to bashing your stash as you learn to Use It Up, Make it Do, or Do Without making this easy quilt! Quick piecing techniques and color play make this project fun! **Pattern fee \$9.00** payable to instructor contains the pattern and a color photo of the project. **Supply List:** Scissors, your machine with 1/4” foot, neutral thread on top and in bobbin, straight pins, 12 1/2” square, if you have an Angler II, please bring it (don’t forget tape!). Fabric as follows: One package of 2 1/2” pre-cut strips (Bali Pops, Tonga Treats, Stonehenge) and several sets of (4) or (5) 4 1/2” squares- **OR** Pre-cut your fabric as follows (**Note: this is for ONE block - please bring at least (4) blocks worth of pre-cut fabric.**) (16) 2 1/2” squares of a light (or read light), (4) 2 1/2” squares of Color #1 (just choose a color), (4) 2 1/2” squares of Color #2 (a different color than color #1), (4) 2 1/2” squares of Color #3 (a different color than colors #1 and #2), (4) 4 1/2” squares of Color #4 (a different color than colors #1, #2 and #3), (1) 4 1/2” square of Color #5 (a different color than colors #1, #2, #3, and #4), **OR** (5) 4 1/2” squares of the same color. This piece looks great in batiks, small scale Asians or small scale prints. No stripes or large scale fabrics please. You may also wish to bring a few 16” squares of batting to lay out (and pin) additional blocks.



**TS2 - CHOCOLATE TRUFFLE SCARF (Machine Piecing / Finishing) – Terri Sontra, Mirror Lake, NH** – No two scarves are the same – each is a work of art. You will be the envy of all your friends! Nothing says ‘decadent treat’ like a chocolate truffle. This scarf will be a decadent treat for your wardrobe. Made completely on your sewing machine. Scarf will be completed by the end of the class. Kit fee of \$20.00 includes pattern and EVERYTHING you need to make one scarf. All you need to bring is your sewing machine, thread, pin and scissors. Finished Size 4” x 72”. Skill level: Beginner & Above. *Kit fee of \$20.00. Sewing Machine Required.*



### **6:00 PM – 9:00 PM**

**KP1 – APPLIQUE UNVEILED.....A Tulle Appliqué Method (Machine Appliqué) – Kristi Parker, Amherst, NH** - This quick and easy method of appliqué can be done entirely by machine, but the results have the look of hand appliqué. Very fine bridal tulle is used as an underlay for the appliqué motifs, but it is not visible in the finished project. Students will construct appliqué motifs from patterns provided by the teacher to create a block that can be finished to make a pillow or used as the beginning of a larger quilt. **Supply List:** Sewing Machine Required. 18x18” background fabric, A variety of scraps and fat quarters for appliqué motifs, Thread to match fabric colors, Clear thread [such as YLI Wonder Thread] (optional), ¼ yard fine bridal tulle (white for light backgrounds and dark for dark backgrounds)\*, Freezer paper\*, Scissors, Pinking shears (optional), Pins, A hand sewing needle, A pencil, A chopstick (optional), A stapler (optional), Lightweight cardboard (an empty cereal box or shirt box), A glue stick, Sewing machine with zig-zag capability, An open-toe or zig-zag foot for sewing machine, Extension cord (optional), Portable light (optional), *\*limited supplies available from the teacher.*

### **LUNCH & LECTURE – FRIDAY, MAY 11<sup>th</sup>, 12:00 PM**

**JD1 – STASH HAPPENS (Lecture) – Judy Damon, Milford – NH** - Are you drowning in your stash? Did you ever spend more time hunting for a tool than using it once you'd found it? Does your sewing space look like a scene from “*Hoarders*”? There's hope! You can get it under control, and this presentation can help you get started. You'll get dozens of tips for sorting and storing everything from fabric and scraps to tools and books, from someone who has seen it all, and owns way too much of it herself! It's a light-hearted and info-packed look at organizing the space we love to inhabit.



### **DINNER PARTY WITH LINDA J. HAHN PRESENTING “DON’T QUIT YOUR DAY JOB...YET!” WITH LINDA J. HAHN**

#### **PLUS SHOW AND TELL AFTERWARDS – FRIDAY, MAY 11<sup>th</sup>, 6:30 PM**

It’s the day’s end but not the end of the day! Join us for a scrumptious Dinner Party with Linda J. Hahn presenting “Don’t Quit Your Day Job...Yet!” plus Show and Tell afterwards.



**LH4 – DON’T QUIT YOUR DAY JOB...Yet! (Lecture) - Linda J. Hahn, Manalapan – NJ** - Do you dream of quitting your day job and working in the quilting industry in some capacity? Are you planning a guild retreat? Have you made a quilt and been asked to teach it at a guild or shop? Are you curious about a particular area? Linda will answer all your questions with no sugar coating! This lecture is not just for those who are interested in working in the quilt industry, but those who are curious about what goes into the various jobs, such as “what is it like to Teach on the road?” how do patterns get from concept to quilt shop? “What is it like to write a book?” Linda shares tons of information that she has learned over the course of 17 years as a shop teacher, travelling teacher, author, pattern designer, magazine contributor, quilt show vendor, quilt show, retreat and cruise organizer, long arm quilter, product designer. (*Door prize - Insiders Guide to Quilting Careers - donated for this presentation*).

**SHOW & TELL:** Enjoy a Show & Tell of quilts, wall hangings, blocks and other quilted pieces. Who are the exhibitors? YOU ARE! We want everyone to bring a sample of work and tell us what inspired you to make it. And even if you don’t have anything to show and tell about, please come for dinner, dessert, friendship and to see what others bring!

---

Vendors *May Market* is Open to the Public

Thursday 10:00 AM – 8:00 PM & Friday 10:00 AM to 5:00 PM

**Daily ADMISSION TO VENDORS IS FREE!!!**





# A Quilters' Sampler™

## REGISTRATION FORM

REG. # \_\_\_\_\_

NAME \_\_\_\_\_ PHONE \_\_\_\_\_

STREET \_\_\_\_\_

CITY, STATE & ZIP \_\_\_\_\_ EMAIL \_\_\_\_\_

Please fill out and sign as indicated below. **Indicate a First (1), Second (2), and Third (3) Choice.** Base costs on First Choices, Eastcoast Quilters Alliance 3, LLC will make adjustments in fees and inform you of balance due or issue refunds. Any kit fees are payable directly to the teacher in class. Thank You.

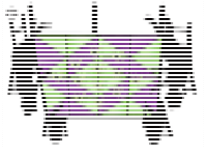
THURSDAY, MAY 10 9:00 AM to 12:00 PM	
_____ BH2 – Beth Helfter .....	\$35
_____ DL1 - Diane Loomis .....	\$35
_____ JD2 – Judy Damon.....	\$35
_____ KA1 – Karen Pessia .....	\$35
_____ KR1 – Kristine Poor .....	\$35
_____ LH1 – Linda J. Hahn .....	\$35
12:30 PM Lunch & Lecture	
_____ BH1 – Plays Well With Others with Beth Helfter .....	\$22
2:00 PM to 5:00 PM	
_____ CF1 – Cary Flanagan .....	\$35
_____ DL2 - Diane Loomis .....	\$35
_____ KN1 – Kathy Anderson .....	\$35
_____ KR2 – Kristine Poor .....	\$35
_____ LH2 – Linda J. Hahn .....	\$35
_____ TS1 - Terri Sontra .....	\$35
6:00 PM to 9:00 PM	
_____ KN2 – Kathy Anderson.....	\$35
_____ KP1 – Kristi Parker.....	\$35
_____ LP1 – Linda Pearl.....	\$35

FRIDAY, MAY 11 9:00 AM to 12:00 PM	
_____ BH2 – Beth Helfter.....	\$35
_____ DL3 - Diane Loomis .....	\$35
_____ JD3 - Judy Damon .....	\$35
_____ KN3 - Kathy Anderson .....	\$35
_____ LH3 – Linda J. Hahn .....	\$35
_____ TS1 – Terri Sontra .....	\$35
12:30 PM Lunch & Lecture	
_____ JD1 – Stash Happens with Judy Damon .....	\$22
2:00 PM to 5:00 PM	
_____ CF1 – Cary Flanagan .....	\$35
_____ DL4 - Diane Loomis .....	\$35
_____ KA1 – Karen Pessia .....	\$35
_____ KR2 – Krstine Poor .....	\$35
_____ LH5 – Linda J. Hahn .....	\$35
_____ TS2 – Terri Sontra .....	\$35
7:00 PM to 9:00 PM	
_____ LH4 – Don't Quit Your Day Job....Yet! with Linda J. Hahn plus Show & Tell.....	\$25
6:00 PM to 9:00 PM	
_____ KP1 – Kristi Parker .....	\$35

***NO, I AM NOT AN EQA3, LLC MEMBER, ENCLOSED IS \$12.00 TO JOIN***

<p><b><u>TOTALS</u></b></p> <p>THURSDAY _____</p> <p>FRIDAY _____</p> <p>REGISTRATION (Non-Members Only) <u>\$12.00</u></p> <p>TOTAL ENCLOSED _____</p> <hr/> <p style="text-align: center;"><b><u>OFFICE USE ONLY</u></b></p> <p>PAID: <input type="checkbox"/> VISA <input type="checkbox"/> MC <input type="checkbox"/> CK# _____</p> <p>DATE: _____ INITIALS: _____</p> <p>Balance Due _____ Refund Due _____</p> <p>Confirmation Sent _____</p>	<p style="text-align: center;"><b><u>PAYMENT</u></b></p> <p style="text-align: center;">Make checks payable to: Eastcoast Quilters Alliance Three, LLC Mail Check, Registration Page, and SASE to: Sarah Glenfield, EQA3 – Registration 58A Harvey Road, Londonderry, NH 03053</p> <p style="text-align: center;">-----Or-----</p> <p>Charge my VISA _____ or MC _____</p> <p style="text-align: center;">□□□□-□□□□-□□□□-□□□□</p> <p style="text-align: center;">Expiration Date: (Month/Year): □□-□□</p> <hr/> <p style="text-align: center;">(Card Holder's Signature)</p>	<p><b>LIABILITY WAIVER and INDEMNIFICATION AGREEMENT</b></p> <p>To the maximum extent of the law, your attendance and participation, including that of your children and minors accompanying you, in any Eastcoast Quilters Alliance Three, LLC class, lecture, tours, or other events (paid for or not), or on the show and exhibit floor, is conditioned on your agreement to hereby indemnify Eastcoast Quilters Alliance Three, LLC, its employees, volunteers and contractors from, and never to make any claim of injury, loss or damage to you or your children and minors accompanying you against Eastcoast Quilters Alliance Three, LLC, its employees, volunteers, and contractors, caused by its very first negligence, strict liability, or for any other reason.</p> <p>Signed _____ Date _____</p>
------------------------------------------------------------------------------------------------------------------------------------------------------------------------------------------------------------------------------------------------------------------------------------------------------------------------------------------------------------------------------------------------------------------------------------------------------	----------------------------------------------------------------------------------------------------------------------------------------------------------------------------------------------------------------------------------------------------------------------------------------------------------------------------------------------------------------------------------------------------------------------------------------------------------------------------------------------------------------------------------------------------------------------------------------------	-------------------------------------------------------------------------------------------------------------------------------------------------------------------------------------------------------------------------------------------------------------------------------------------------------------------------------------------------------------------------------------------------------------------------------------------------------------------------------------------------------------------------------------------------------------------------------------------------------------------------------------------------------------------------------------------------------------------------------------------------------------------------------------------------------------------

Eastcoast Quilters Alliance 3, LLC  
58A Harvey Road  
Londonderry, NH 03053



# *A Quilters' Sampler™*

May 10 & 11, 2012

**COURTYARD BY MARRIOTT – NASHUA, NEW HAMPSHIRE**

*[www.aquiltersgathering.com](http://www.aquiltersgathering.com)*

**DON'T MISS THE WONDERFUL *May Market***

**OPEN FREE OF CHARGE THURSDAY 10 to 8 AND FRIDAY 10 to 5**

Take a break from classroom activities and browse through the market where you will find a wonderful array of all things you need and want. You do not have to be registered in any program to visit the Vendors Market. Everyone is welcome!

***Run Away!* STAY OVERNIGHT AND ENJOY ALL THE SAMPLER HAS TO OFFER**

The Courtyard by Marriott, 2200 Southwood Drive, Nashua, N.H. has reserved a block of rooms for *A Quilters' Sampler™* at a special rate: Single/Double/Triple or Quadruple at \$89+ tax. To Make Reservations, please indicate that you are with Eastcoast Quilters Alliance 3, LLC **or** *A Quilters' Sampler™* in Nashua, NH, May 10 & 11, 2012 by calling 1-603-880-9100. In the event you have problems making reservation through this number please contact Sarah Glenfield for help. It is recommended to make reservations early.