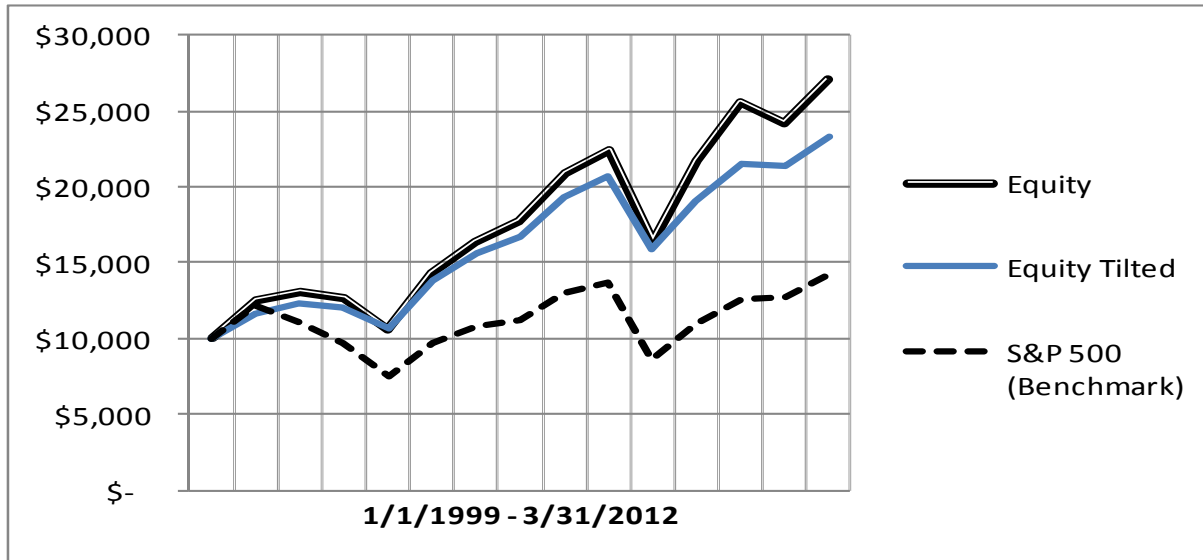


## Returns as of March 31, 2012 - Net of All Fees



Annualized  
As of 12/31/2011

	<i>Stock/Bond</i>	YTD	2011	2010	2009	2008	2007	2006	2005	2004	2003	2002	2001	2000	1999	10 year	Since Inception
<b>Conservative Balanced</b>	<b>40/60</b>	5.3%	2.9%	10.6%	17.5%	-11.3%	7.4%	9.9%	4.8%	9.9%	21.4%	-2.6%	3.7%	8.0%	6.4%	6.67%	6.52%
<b>Balanced</b>	<b>60/40</b>	7.8%	-0.2%	11.2%	18.1%	-18.1%	7.5%	12.8%	6.6%	11.5%	25.9%	-7.3%	0.2%	5.6%	11.7%	6.09%	6.00%
<b>Equity Tilted Balanced</b>	<b>75/25</b>	9.5%	-0.9%	13.1%	20.2%	-23.5%	7.6%	14.9%	7.6%	12.5%	29.4%	-11.5%	-1.8%	5.4%	16.7%	5.85%	6.00%
<b>Equity</b>	<b>100/0</b>	11.9%	-5.5%	17.6%	32.5%	-27.0%	7.1%	18.3%	8.4%	13.7%	35.9%	-16.5%	-3.3%	4.9%	24.6%	6.66%	6.99%
<b>S&amp;P 500 Index—Benchmark</b>	<b>100/0</b>	12.6%	2.1%	15.1%	26.5%	-37.0%	5.4%	15.6%	4.8%	10.7%	28.5%	-22.1%	-12.0%	-9.1%	21.1%	2.86%	1.94%

Investment Advisory Services offered through Align Wealth Management, a Federally Registered Investment Advisor.

All investments involve risk including the potential to lose principal invested. Past performance is no indication or guarantee of future results.