

SCARECROW MAKING TIPS AND TRICKS

THE BASICS

■ 1. THINK BEFORE YOU BUILD

Come up with a concept. Imagine how your scarecrow might look, make a sketch. Be open to changing your plans once you begin to build.



WILL YOUR SCARECROW BE SITTING?



STANDING?



OR HANGING?



#74 Santa Barbara County Fire Dept

THE BASICS

■ 2. BUILD STRONG

- ❖ Your scarecrow may be up for as long as a month.
- ❖ It may be poked, prodded or hugged. It should look as good on the last day as it did on the first.
- ❖ A strong support structure is essential
- ❖ If your scarecrow is outside use weather resistant materials.
- ❖ Firmly attach everything with wire, glue or by sewing.



THE BASICS

■ 3. COLLECT YOUR MATERIALS

Once you have your concept, imagine HOW you are going to build your scarecrow and start collecting your materials as soon as possible.

- ❖ Look around your house or business
- ❖ Thrift stores
- ❖ Craft stores – Michaels in Lompoc, Santa Maria or Goleta
- ❖ Joanne's or Beverly's in Santa Maria
- ❖ Art From Scrap – 302 E Cota St., Santa Barbara
Open Tues, Wed, Fri 10 -2; Thurs 10-6; Sat 10-3

FROM BEGINNING TO END.....



THE BASICS

■ 4. PLAN YOUR STEPS

- ❖ Come up with a step-by-step plan of how and where you are going to assemble your scarecrow.
- ❖ Have all the tools and materials you need before you begin.
- ❖ Know how you will transport your scarecrow
- ❖ You can add lots of fine details on-site when you install your scarecrow.

THE MOST IMPORTANT THING IS TO HAVE FUN!

- You do not need to make a fancy scarecrow to have a good scarecrow.
- Some of the very best are the simplest.
- What makes a good scarecrow is **good planning** and **good building**.



MATERIALS FOR THE HEAD

First decide how you want to build the head

- ❖ Burlap Sack
- ❖ Pillow Case
- ❖ Fake pumpkins
- ❖ Pantyhose stuffed with batting
- ❖ Purchased scarecrows
- ❖ Tin Can
- ❖ Styrofoam Ball
- ❖ Plastic Bucket
- ❖ Paper Mache
- ❖ Halloween Mask
- ❖ Gallon size plastic milk jug

Large Tin Can



Burlap Wrapped Ball



Trick or Treat Bucket



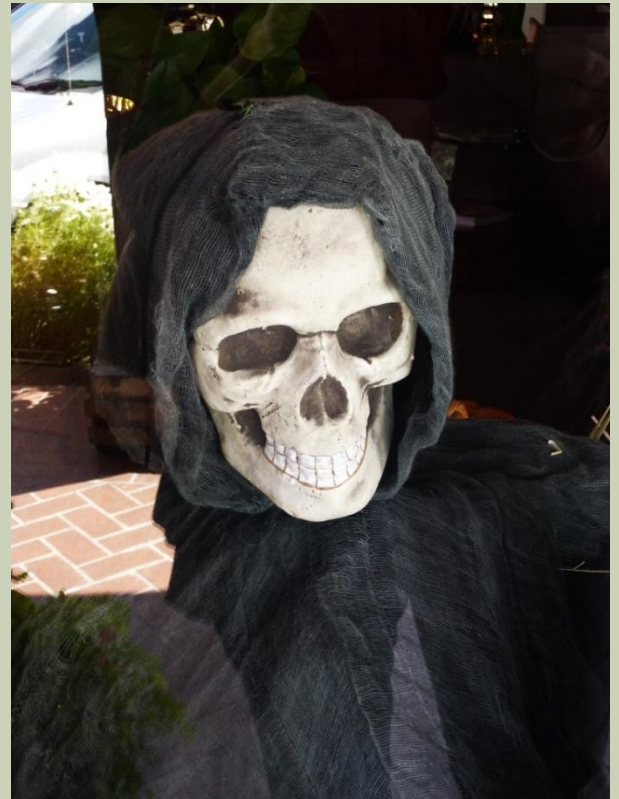
Fake Pumpkin



Stuffed Animal



Halloween Mask



THE STAND

Scarecrows need a sturdy skeleton

- ❖ Wood
- ❖ Metal Posts or Rebar
- ❖ PVC Pipe
- ❖ Bamboo
- ❖ Saw Horses

HOW TO BUILD A BASIC STAND

THE BASIC WOOD STAND

■ Materials You'll Need

- ❖ Wood boards

- ❖ Screws

- ❖ Screwdriver

- ❖ Saw

HOW TO BUILD A BASIC WOOD STAND

1. Measure and cut a wood board the length of the scarecrow from top of head to feet, and add about 2 feet to the length of board so the post can be placed in the ground.
2. Measure and cut, a second board the width across the scarecrow from wrist to wrist if you want your scarecrows arms to be horizontal. Or measure a shorter width for shoulders if you want arms to be flexible.

BUILDING THE WOOD STAND

3. Lay the longer board flat on the ground.
4. Position the second board to form a lower case t.
5. Screw one of the screws into the crossing board and through to the long board.
6. Screw the second screw an inch or so away from the first, and slightly above or below the first. The second screw keeps the two boards from twisting.

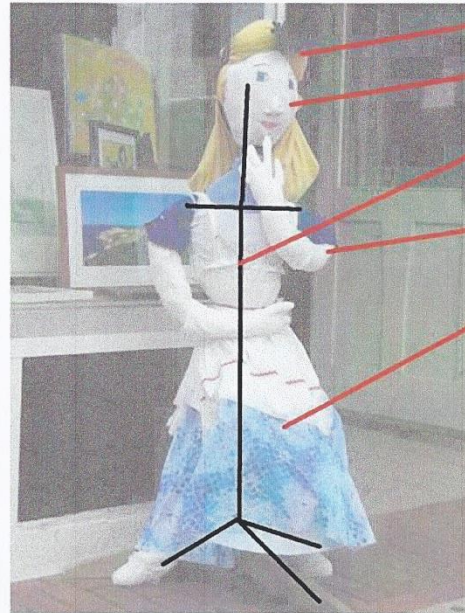
DRESSING YOUR SCARECROW

1. Dress the scarecrow using the stand as bones.
2. Use waterproof material – such as garbage bags or plastic netting to seal your stuffing.
3. Stuffing can be bubble wrap, Styrofoam peanuts, crumpled up newspaper, plastic bags or even straw.
4. If you are using pants, put the long board through one pants leg. Stuff both legs and attach the waistband of the pants to the board using rope, twine, glue or duct tape.
5. Tie off bottom of pants
6. If you are using a skirt, attach the waistband in the same manner as the pants.

DRESSING YOUR SCARECROW

7. Pound your scarecrow frame into the ground or use a large dirt filled flower pot
8. Put on shirt. Attach to pants with safety pins or by sewing.
9. Tie off sleeves. Add gloves for hands
10. Attach head to pole. Add hat or hair.

Alice In Wonderland



Fabric hair

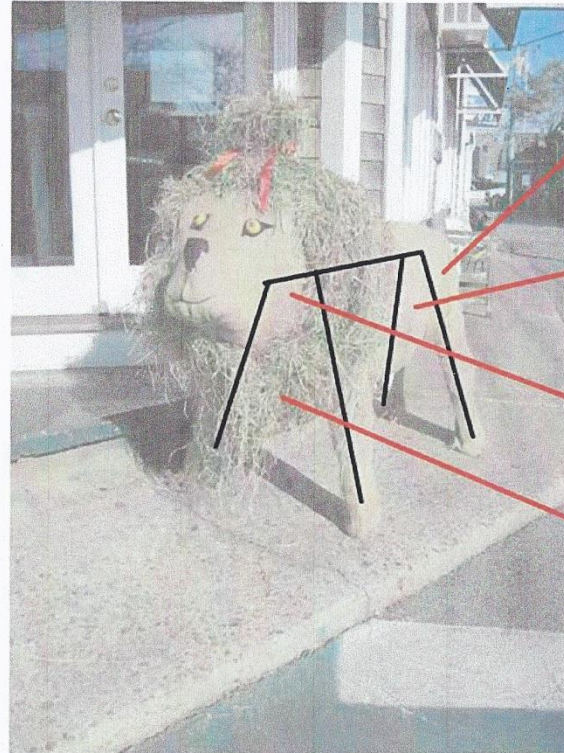
**Pillow case head.
Painted features**

**Wooden tripod center
with cross brace for
shoulders**

**Arms made seperately
and then attached.
Stuffed arm length gloves**

**Dress covers most
of lower half.**

The Cowardly Lion



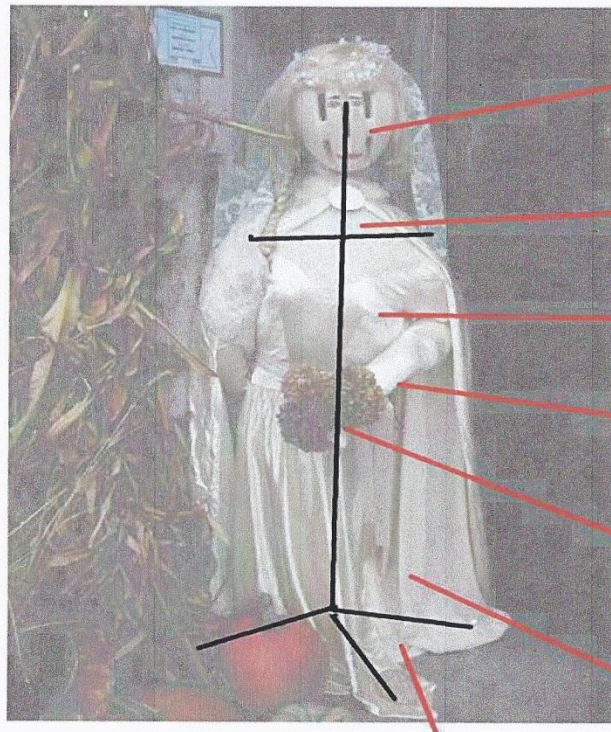
Sawhorse armature

*Canvas stuffed
with hay*

*Seperate canvas
sack wired to body*

*Mane made of hay
attached with glue
or hot-glue gun*

Rebecca



Head: Painted bicycle helmet turned on side

Stuffed white turtle-neck under dress

Real dress

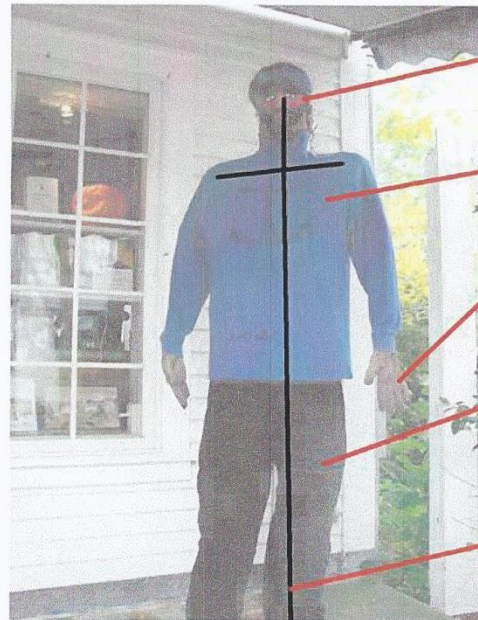
Arm stuffed with hay

Dried flower bouquet hides the fact that there are no hands

No need to stuff bottom half

Wooden tripod held down with cinderblocks runs all the way to top of head.

Captain Haddock



Real cap on painted head

*Real shirt with anchor
drawn in marker*

Stuffed gloves

*Real pants stuffed
with straw*

*Tripod stand runs through
ONE leg and all the way
through head.*

Thing 1 and Thing 2



*Pillowcase heads.
Faces drawn in marker*

*Pre-existing shirts
and pants*

Sawhorse stand

*Post screwed to sawhorse.
Shoulder crossbar is
screwed to post*

Pinocchio



Charlotte



Some scarecrows use found material in surprising ways



SOLVANG SCARECROWS

#18 Hanson's Clock Shop Jewelers



SOLVANG SCARECROWS



#19 Bit O' Denmark Restaurant



#44 Solvang Toyland

SOLVANG SCARECROWS



SOLVANG SCARECROWS



SOLVANG'S 2012 WINNERS



#40 Danish Mill Bakery



#95 Design Alternatives

SOLVANG SCARECROWS



SOLVANG SCARECROWS



SOLVANG'S 2012 BEST SCARECROW



#102 Nielsen's Market

INTERNET RESOURCES

- How to make a scarecrow

<http://www.youtube.com/watch?v=SPsCBJDLxFs>

- Soft Sculpture

- <http://www.hgtv.com/crafting/life-sized-soft-sculptures/index.html>

- Killer Scarecrow

http://www.hauntedhouse.com/haunted_house_magazine/issue3/wz2.html

- Garden Scarecrow

- <http://www.squidoo.com/create-your-own-garden-scarecrow>

A FEW MORE TIPS

- Use Goop or Gorilla Glue (Valley Hardware) instead of a glue gun
- Raffia is less messy than straw and has the same effect (Craft Stores)
- A large “doll” needle may be helpful – Rasmussen’s
- Boots partially filled with cement or plaster of paris make a sturdy base
- Use a dolly or a plant stand with wheels if you need to take your scarecrow in at night.
- Alpha Thrift Store on Hollister Ave in Goleta is a great source for Halloween Costumes

IT'S EASY TO PARTICIPATE

- IN SOLVANG
- Go to www.solvangcc.com for online participant form.
Confirmation and event information will be e-mailed to you.
- Fill out the participant form today!

Help us out! Sign up early!

LAST DAY TO GET YOUR SCARECROW ON THE MAP AND BALLOT
IS SEPTEMBER 18, 2013 but earlier signups greatly appreciated

SOLVANG CONTACT INFO

- Questions? E-mail Solvang3W@gmail.com
- Call Lynda Kelley or Sue Moualim at 688-0701 or
- Susan Williams 245-0626

